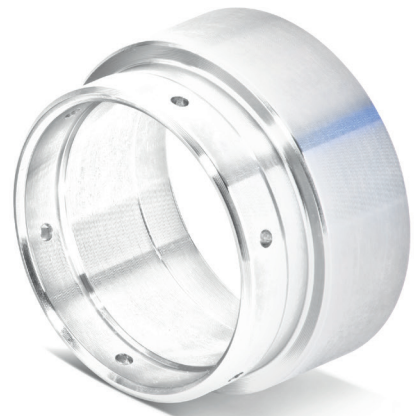


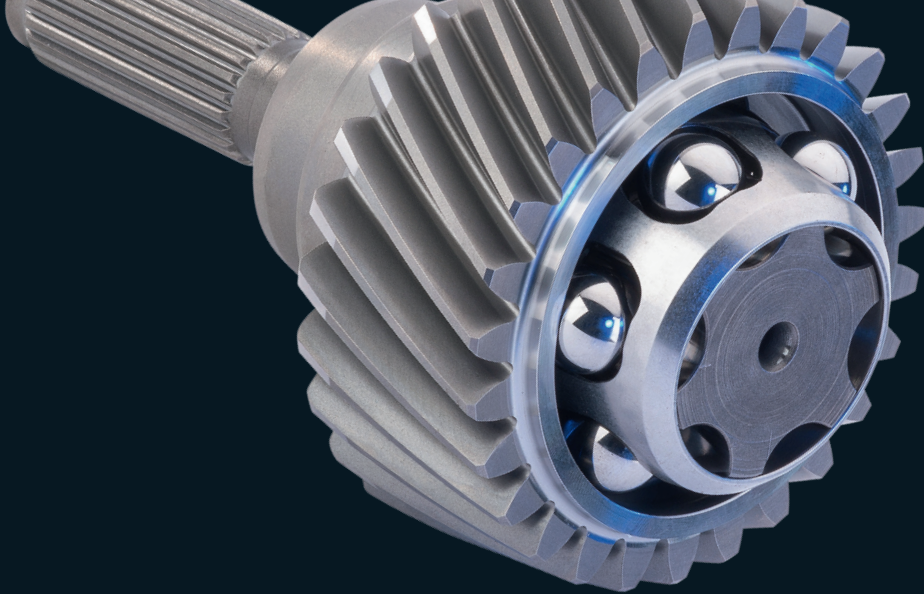
 **GRÜNEWALD** GMBH & CO.KG  
**FEINMASCHINENBAU**

*[WWW.GELENKWELLEN.DE](http://WWW.GELENKWELLEN.DE)*

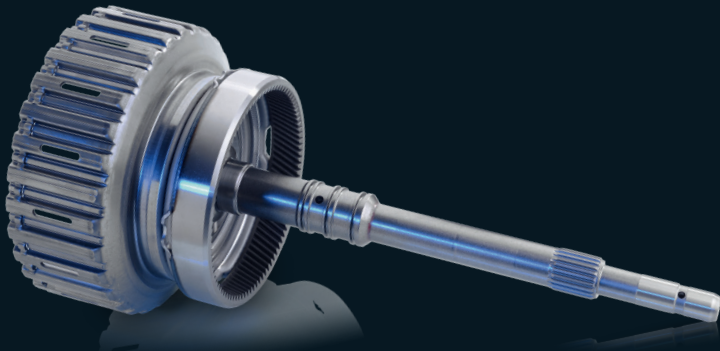
# *SERIENPRODUKTION*





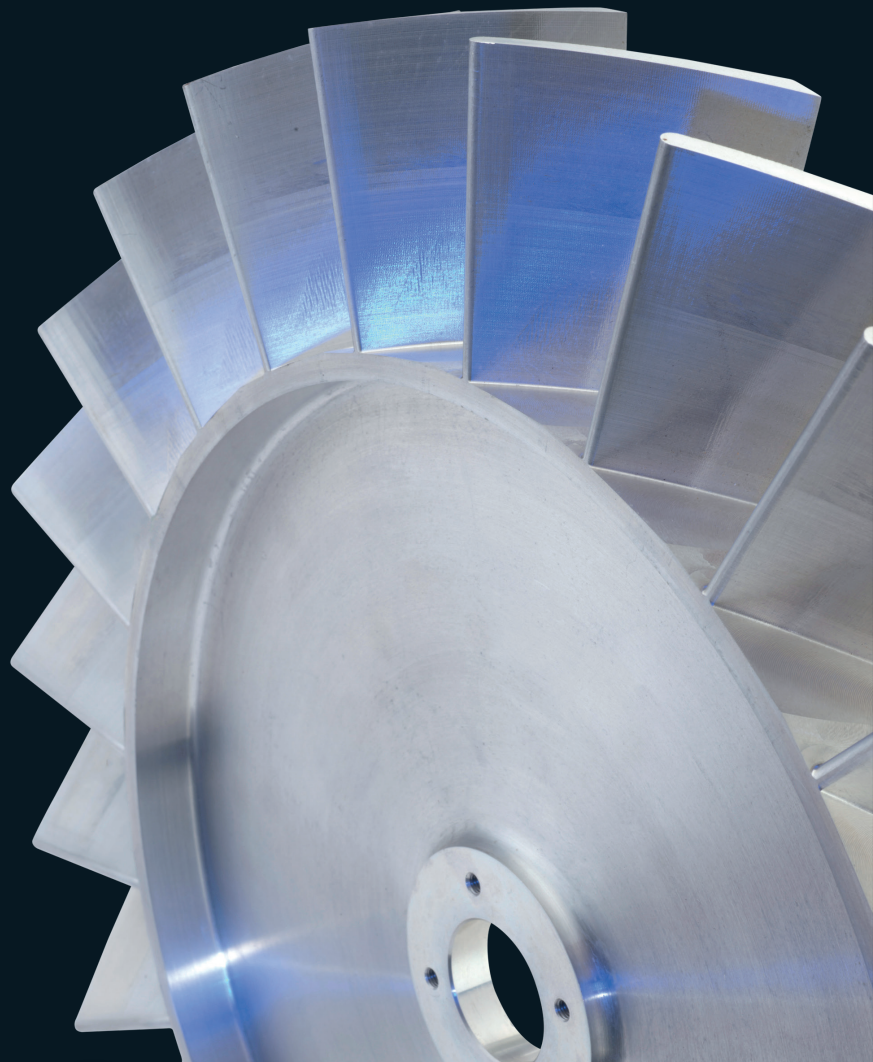


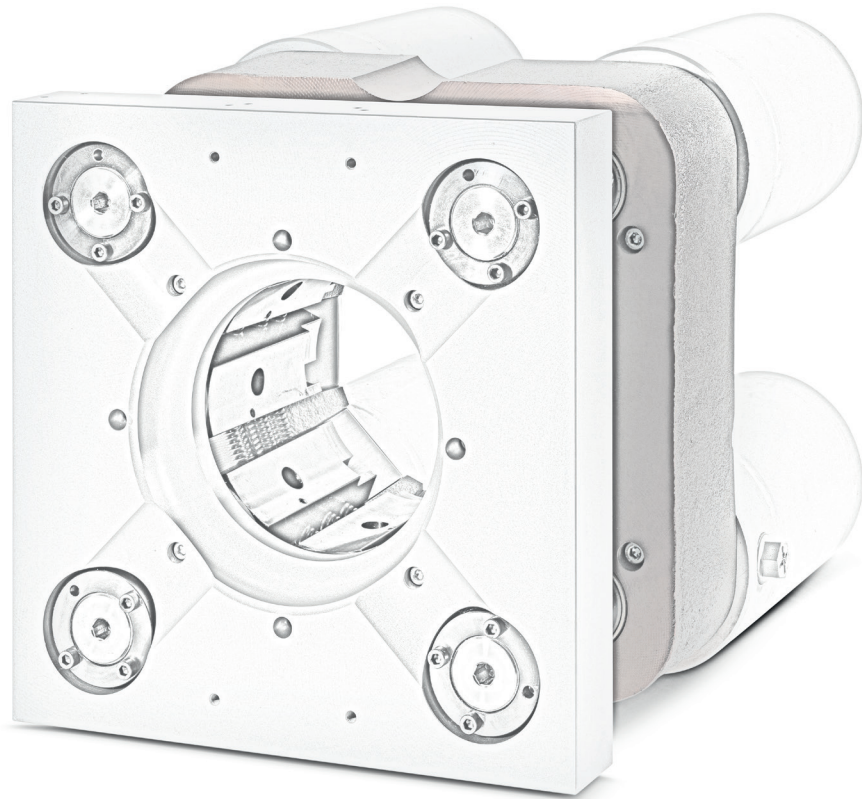
**KLEIN -  
MITTEL -  
GROSS - *SERIEN***

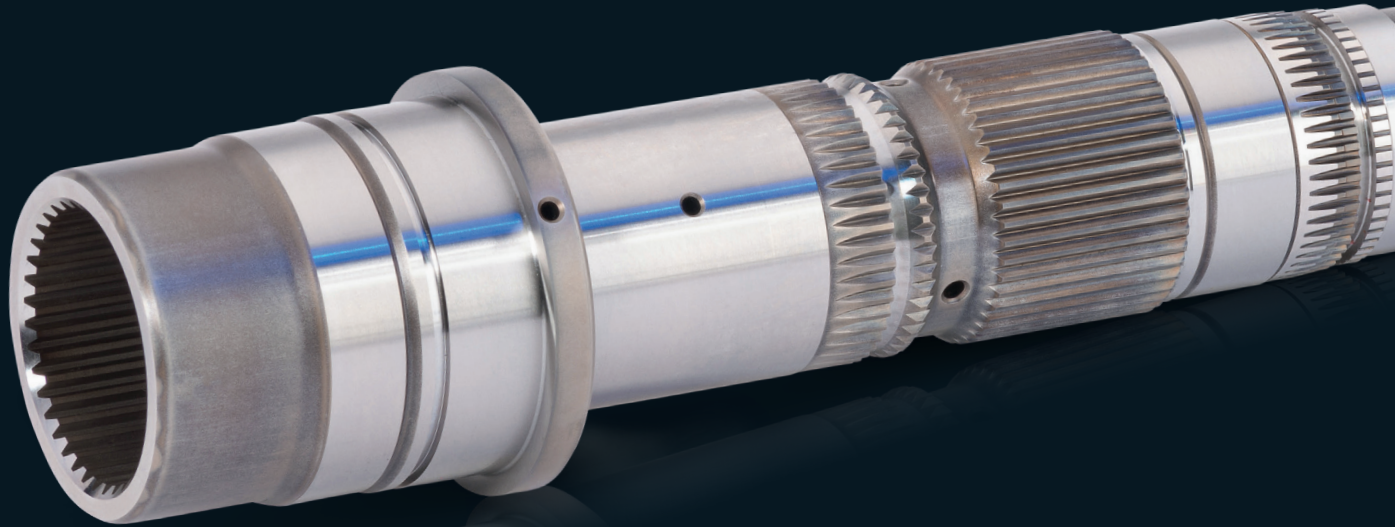


**DER SPEZIALIST  
FÜR *KOMPLEXE*  
WERKSTÜCKE  
IN JEDER *STÜCKZAHL***

**ERSATZTEIL  
KLEINSERIEN  
PROTOTYPEN**

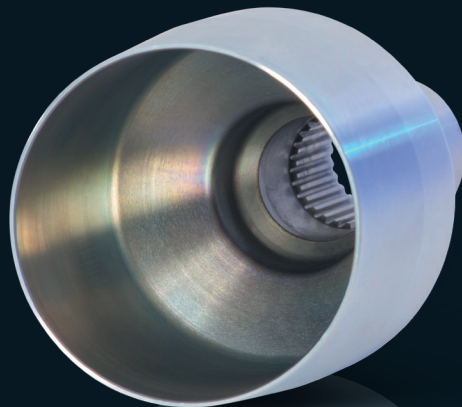




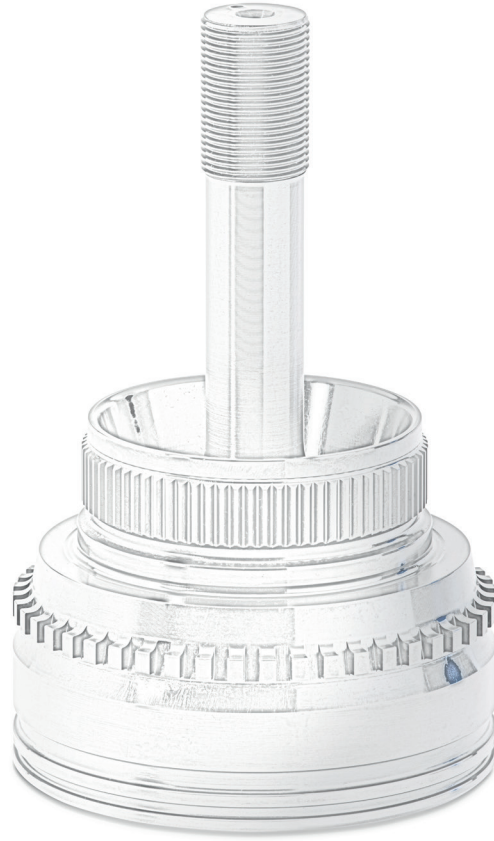


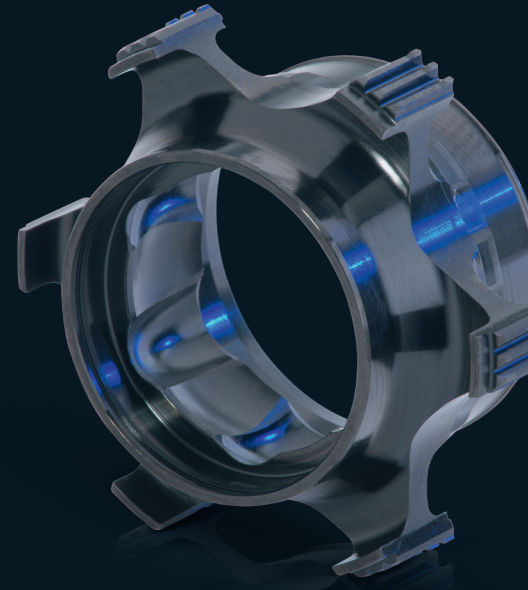
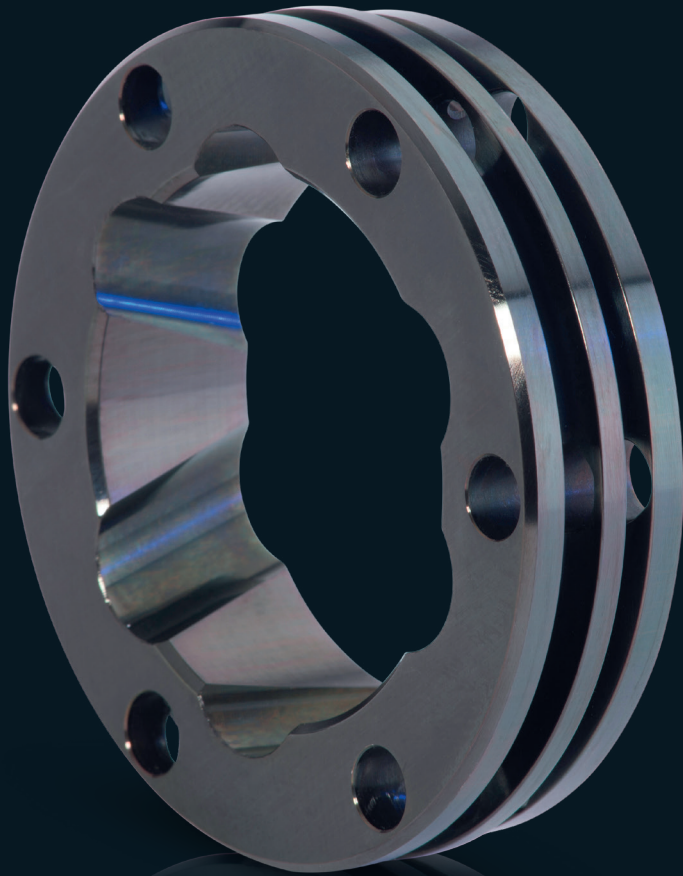
**AUTOMOTIVE & MASCHINENBAU**  
**WERKSTÜCKE NACH KUNDENWUNSCH**

# MOTORSPORT



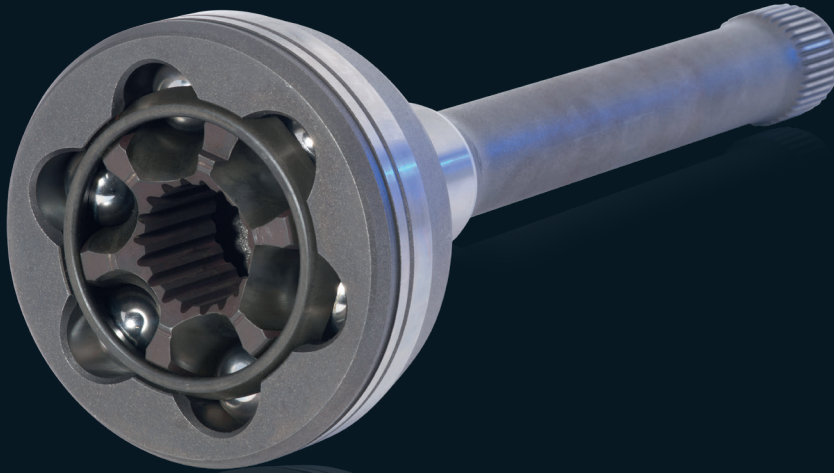






**KURZE REAKTIONSZEITEN  
KOMPLEXE KUNDENWÜNSCHE  
ANSPRUCHSVOLLE MATERIALIEN**

# **GELENKWELLEN**

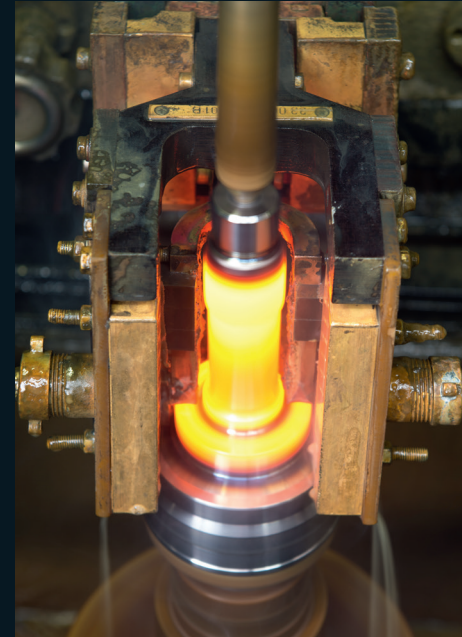


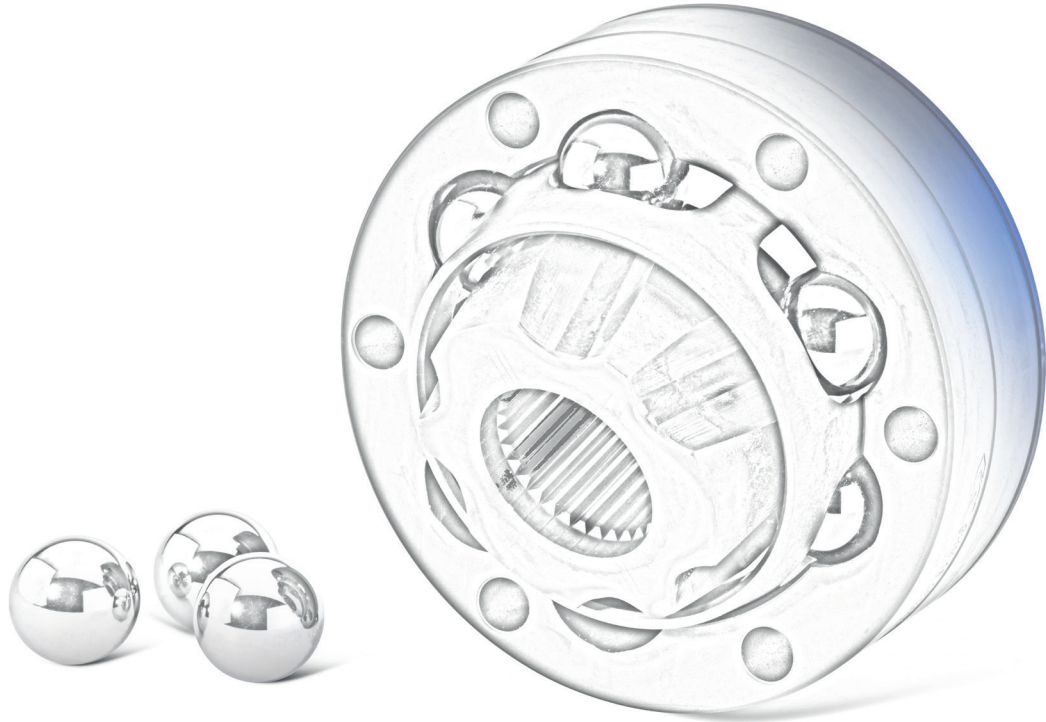
**HOMOKINETISCHE**

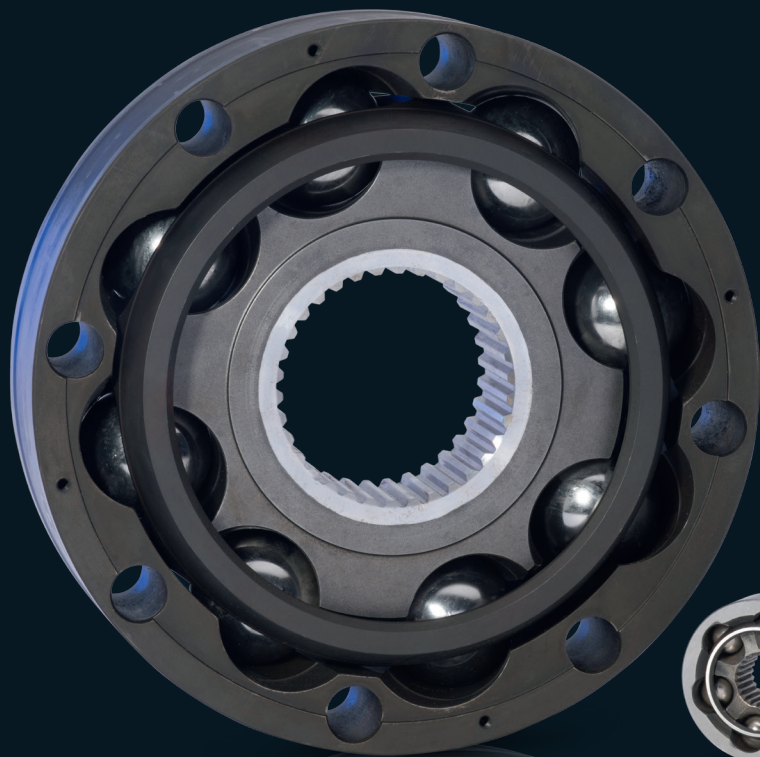
**- GELENKE**

**- GELENKWELLEN**

**JEDER GRÖSSE UND TYP**







**SCHIFFSANTRIEBE**  
**AUTOMOBILBEREICH**  
**SCHIENENFAHRZEUGE**  
**INDUSTRIEANWENDUNGEN**

# VERLAGERUNG







**VERLAGERUNG VON FERTIGUNGSPROZESSEN  
INKL. ÜBERNAHME VON FERTIGUNGSANLAGEN**





**WERK 1**  
**STAMMWERK**  
**D-61279 GRÄVENWIESBACH**  
**INDUSTRIESTRASSE 4**  
**06086 - 39 - 0**

**[WWW.GELENKWELLEN.DE](http://WWW.GELENKWELLEN.DE)**



[www.gelenkwellen.de](http://www.gelenkwellen.de)



**WERK 2**  
**D-35789 WEILMÜNSTER**  
**NASSAUER STRASSE 44**  
**06472 - 91 56 - 0**