



Agenda

1. Introduction
2. Services
3. Experience and Production
4. Team
5. Certificates
6. Location

1. Introduction - Vision

To become leader in welding of metal constructions, focused on delivering high quality to clients

1. Introduction

- ✓ Our Core competency –
**welding of mild and high
strength steel, stainless steel
and aluminum**
- ✓ In compliance with industry
quality standards we offer **high
quality of metal constructions'**
manufacturing



1. Introduction - History of Base

- ✓ 1990 – Base established
- ✓ 2005 – **ISO 9001:2008** certification
- ✓ 2014 – **ISO 14001:2008, ISO 3834-2, EN 1090-2 EXC3, EN 15085-2 CL2** certification
- ✓ 2015 – daughter company **Wartmann Base established** – strategic alliance between Wartmann Technologie AG and Base Group
- ✓ 2016 – **EN 1090-3 EXC3, EN 15085-2 CL1** certification
- ✓ 2018 - **AD2000 DIN EN ISO 3834-2 PED** – Pressure Tank welding

2. SERVICES

We specialize in the following services:

- ✓ **Core process - Welding (Manual, Robotised):**
 - ✓ **Steel**
 - ✓ **Stainless steel**
 - ✓ **Aluminium (Wartmann Base)**
- ✓ **Waterjet cutting OMAX 1,25x2,5m**
- ✓ **Laser cutting BYSTRONIC 1,5x3m**
- ✓ **6 x Sawing machines**



2. SERVICES

We specialize in the following services:

- ✓ CNC Bending (SAFAN)
- ✓ CNC Machining (HARTFORD)
- ✓ Shot blasting and glassblasting
- ✓ Assembling
- ✓ **Non-destructive tests:**

*Visual Test-2, Penetrant Test-2, Pressure Test,
Checking the chemical composition and the roughness*



2. SERVICES

In close cooperation with partners we provide:

- ✓ Chemical treatment galvanization (max size: 13m x 1,6m x 3m)
- ✓ Wet and Powder coating (approval by GE, ABB)
- ✓ Flame and plasma cutting
- ✓ Bending pipes and profiles
- ✓ **Non-destructive tests:** Rentgen Test, Ultrasonic Test, Helium Leakage Test
- ✓ Other services

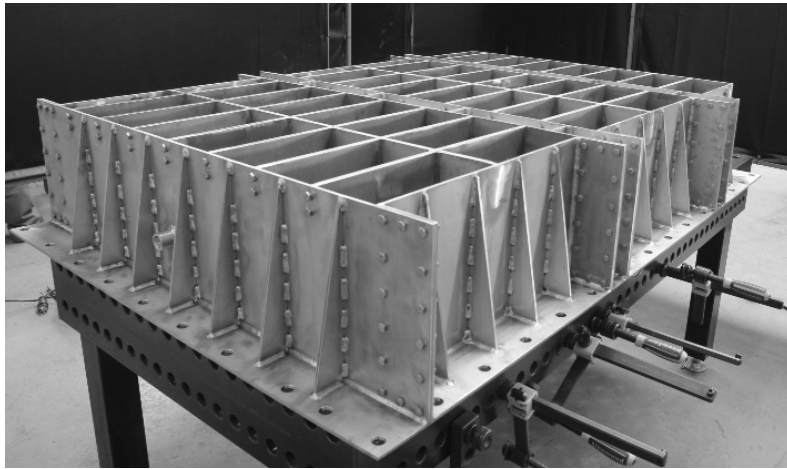
3. Experience and Production

For over 25 years we have delivered a wide variety of metal manufacturing services to our customers:

- ✓ prefabrication and assembly of different types of **metal structures** - for **Energy, HVAC, Marine, Oil & Gas, Railway** industries
- ✓ In 2017 we manufactured metal constructions with net weight of 1'068 tonnes across **carbon steel (820 tonnes), stainless steel (208 tonnes) and aluminium (40 tonnes)**
- ✓ In 2018 increase by 50%

3. Experience and Production

Metal frames for cable fittings



Material: Duplex/Superalloy



Material: Carbon steel S355 and HDG

3. Experience and Production

Waste management systems

Tank 2 and 3 chambers



Material: Tank-AISI316/Frame-CarbonS355

3. Experience and Production



Destiny: HURTIGRUTEN CRUISES
Country: NORWAY

3. Experience and Production



Food Waste Collecting Tank 6 m3

Material: AISI316



3. Experience and Production

Food Waste Collecting Tank 5,5 m3



Material: AISI316

3. Experience and Production

Scrubber Tank - smaller



Material: AISI316

3. Experience and Production

Scrubber Tank - bigger



Material: AISI316



3. Experience and Production

Flotation unit FA-45



Material: Tank-AISI316/Frame-CarbonS355

3. Experience and Production

Flotation unit FA-90



Material: Tank-AISI316/Frame-CarbonS355

3. Experience and Production

Grease separator NS-7 and NS-10



Material: AISI316



3. Experience and Production

BIO pipes systems



Material: Tanks-AISI316/Frames-CarbonS355

3. Experience and Production

BIO pipes systems



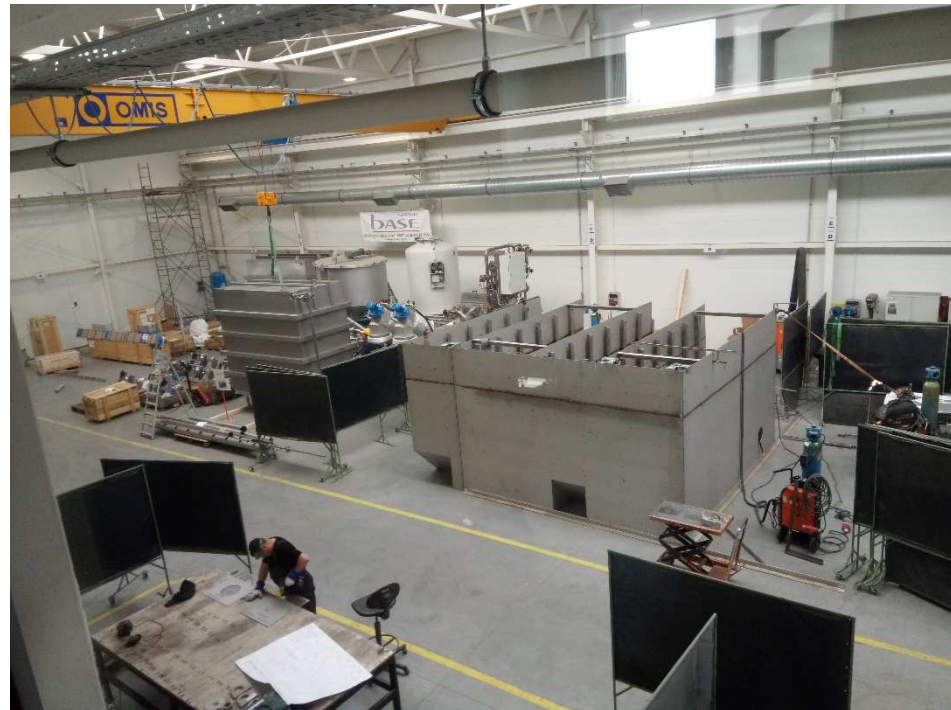
Material: Tanks-AISI316/Frames-CarbonS355

3. Experience and Production

BIO Tank



Material: AISI316



3. Experience and Production

BIO Pipes systems



Material: AISI316



3. Experience and Production

Flotation Unit FLC-75



Material: AISI316/AISI304



3. Experience and Production

Bigg Tanks



Material: AISI316/AISI304

3. Experience and Production

Bigg Tanks



*Destiny: EGRSUND
Country: NORWAY*

3. Experience and Production

Reactors



Material: AISI316/AISI304/Aluminum

3. Experience and Production

Palettanks for Biopharma, Laboratory



Material: AISI304

3. Experience and Production

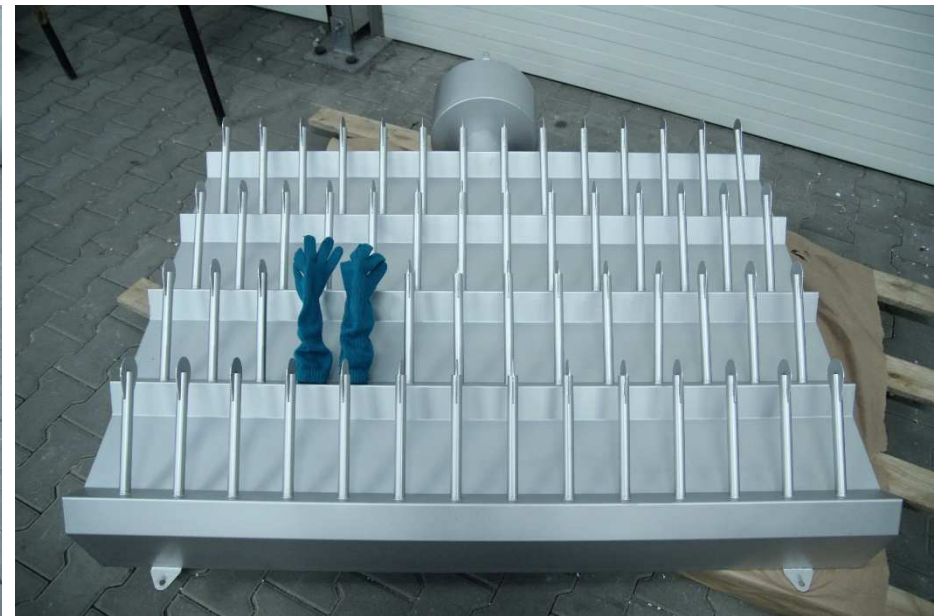
Adoxpol Tanks



Material: AISI304/AISI316

3. Experience and Production

Glove dryer, Conveyors, Bins, Tanks



Material: AISI304

3. Experience and Production

Fish sleeper



Material: AISI304



3. Experience and Production

Fish sleeper



3. Experience and Production

Conveyors



3. Experience and Production

Conveyors



3. Experience and Production

Conveyors



3. Experience and Production

Conveyors



3. Experience and Production

Conveyors

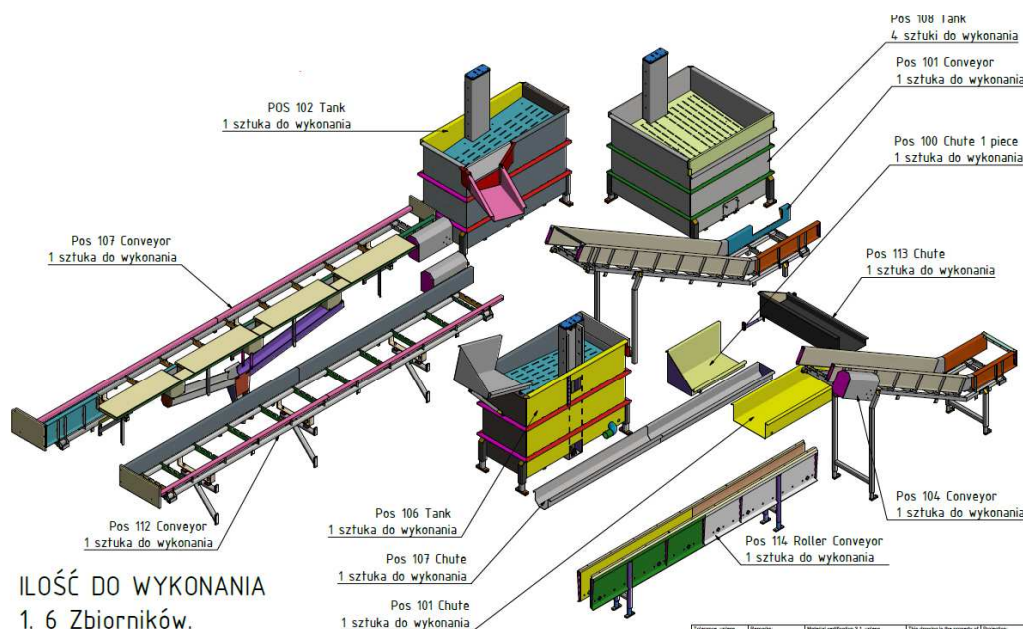


3. Experience and Production

Conveyors



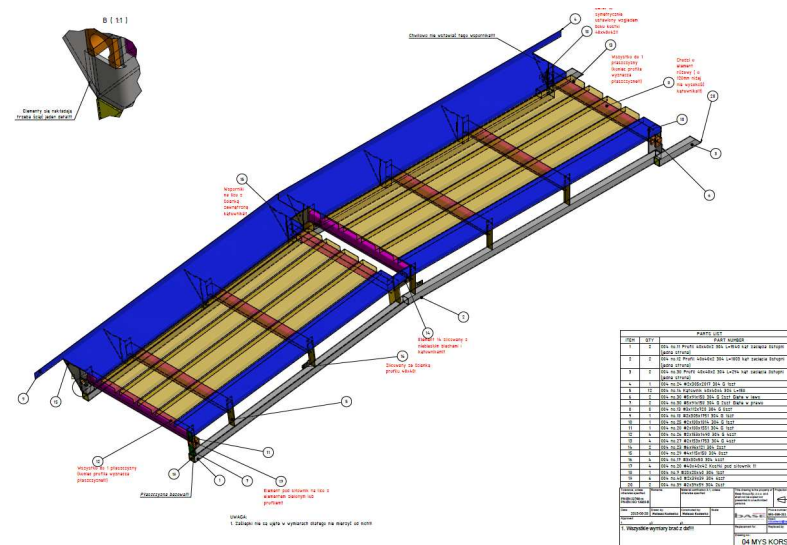
3. Experience and Production

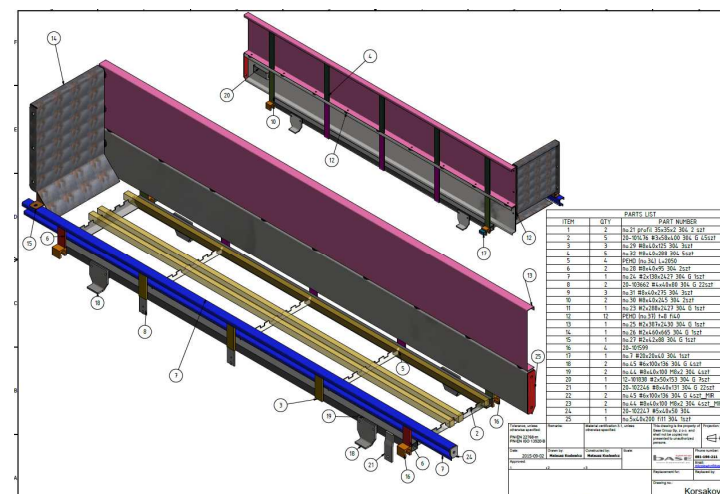


ILOŚĆ DO WYKONANIA

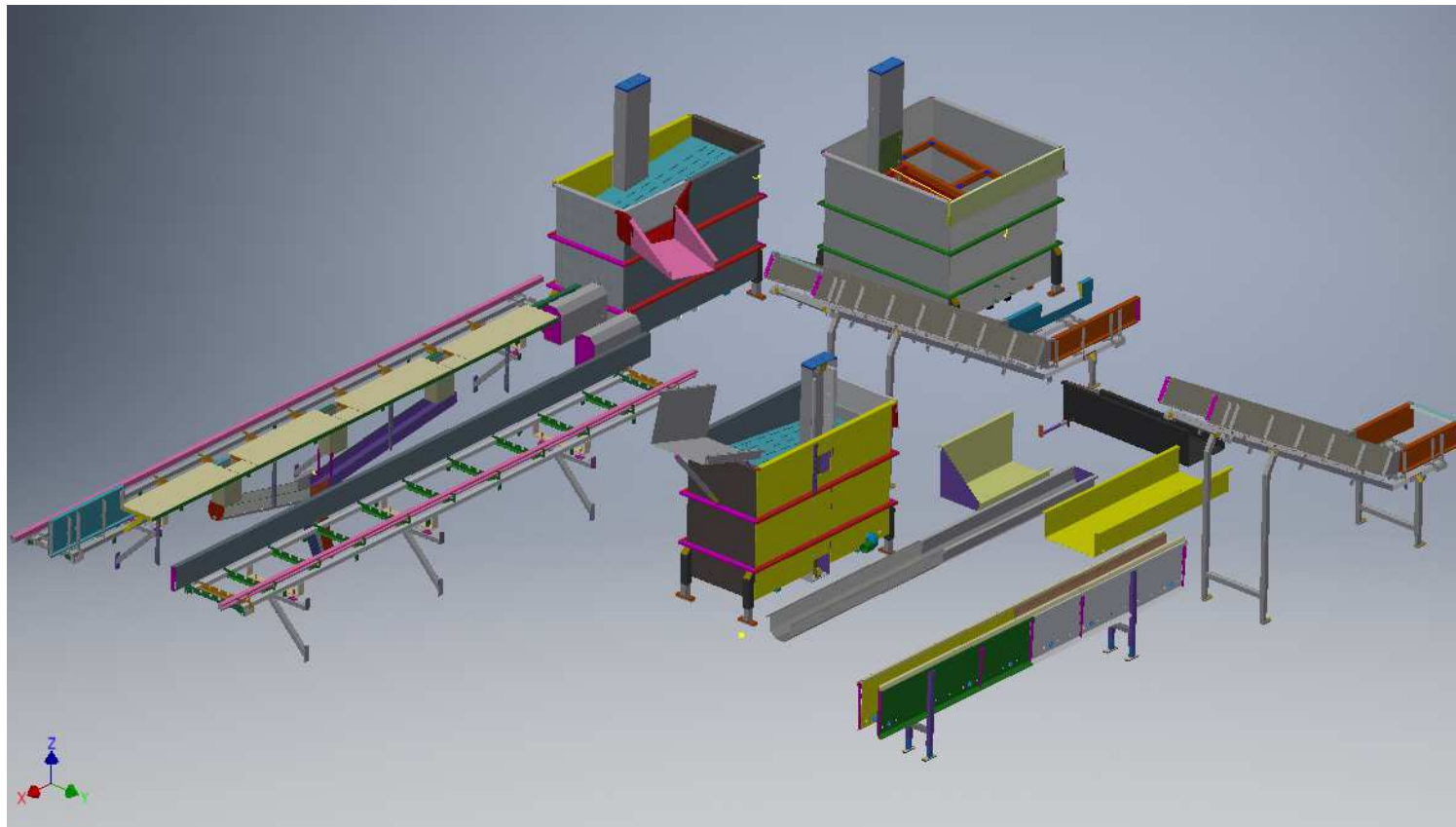
- 6 Zbiorników.
- 4 Taśmociągi.
- 1 Taśmociąg rolkowy.
- 4 Rynny (+ 1 dodatkowa Rynna)

Tytuł: Projekt techniczny	Temat: Budowa linii produkcyjnej	Skala: 1:20	Projektant: BASE
Wersja: 1.0	Opis: Budowa linii produkcyjnej	Wzrost: 1.80	Wzrost: 1.80
1. Materiał: 1.4301 (AISI304)	2. Konstrukcja: pasywna	3. Tylko spawanie TIG-lem	
Order number:	Order number:	Order number:	Order number:





3. Experience and Production



3. Experience and Production

High voltage Energy



Material: Aluminum



3. Experience and Production

High voltage Energy



Material: Aluminum



3. Experience and Production

High voltage Energy



Material: AISI304

4. Team

Our team:

- ✓ 2 International Welding Engineers
- ✓ 13 mechanical engineers
- ✓ Project Management Team
– 9 People
- ✓ **43 highly qualified welders**
(permanent contracts)

In total 230 employees!

-

group
BASE

5. Certificates

We deliver our services in compliance with the following
European and offshore standards:

✓ ISO 9001:2015

✓ ISO 3834-2

✓ ISO 14001:2015

✓ DNV-OS-C401

✓ EN 1090-2 (EXC3)

✓ EN 15085 (CL1)

✓ EN 1090-3 (EXC3)

✓ AD2000 DIN EN ISO 3834-2 PED

6. Location

- ✓ Located in Koszwały, 15km from **Gdańsk, North of Poland**
- ✓ **Direct access to highway** which leads to the airport and harbors in Gdańsk and Gdynia
- ✓ **Daily ferry, night delivery to Karlskrona and Nynäshamn (Sweden)**



6. Location



Fenced and protected area of 4,5ha with possibility of extension to 9,0ha

Facilities:

- ✓ **Production area** – 6000m²
- ✓ **Warehouse** – 1000m²
- ✓ **Office** – 580m²
- ✓ **Crane capacity** – 2x6,3 tons, 3,2 tons



6. Location



6. Location



Summary

- ✓ Base has over **27 years of experience** in metal manufacturing for international clients
- ✓ 215 highly qualified workers
- ✓ We offer **high quality services** at **reasonable price**