



delta T
Gesellschaft für Medizintechnik mbH

Product OverView



Transport Systems for Life Science Products

Dear Customer,

Thank you for your interest in our products.

At delta T we are dedicated to developing the producing thermal stabilizing elements and insulated boxes to maintain sensitive products at specific temperatures.

Whenever you need to transport a thermo-sensitive life science product we can offer you a suitable solution.

We have been developing, designing and producing since year 2000 in our headquarter facility 60 km north of Frankfurt, Germany in Fernwald. Our customers include a number of are well-known global players in the pharmaceutical industry and pharmaceutical distributor.

In addition, we have customers ranging from biotech companies, clinical trials and blood banks, as well as, research, institute and logistic companies.

Our products are sold and used worldwide.

In this Product Overview, you will find the technical details for all our standard products that fulfill most transport requirements.

When you have decided on the most suitable combinations for your needs, please contact us with your required dimensions, the storage temperature and the required transport time of your products.

Along with these standard products, we have already established many tailor-made at customers specific transport solutions.

On request, we will send more information in greater detail.

We are looking forward to hearing from you soon.

The sales team of delta T

Content

Click on the number
to jump to the page

TempShells	04
Ice Accus	08
Gel Accus	09
-30°C Freeze Elements	11
-21°C Freeze Elements	13
-18°C Freeze Elements	15
4°C Accus	17
22°C Accus	19
37°C Accus	21
Gel Packs	23
BlueLine Travelbag	24
BlueLine Boxes	25
BlueLine Bags	29
Vacuum Boxes	30
Transport Boxes	33
Neopor Boxes	34
EPS Line Boxes	36
Pallet Shipper	37
Datalogger	40

4C TempShell – Element

Order No. (pair): A 1000 29 uk
Consists of 2 halves of shells

Dimensions:

Outer: 275 x 155 x 60 mm

Inner: 210 x 110 x 30 mm

Colour: PE natural

Fluid: blue

Weight: $2 \times 0.54 = 1.08$ kg

Sealing: laminated aluminium film and protective cap.

Liquid crystal thermometer 0°C ... 12°C

Shows the current temperature of the element

Will maintain a temperature between 2°C...8°C

Protection against freezing



4C TempShell – Frame

Order No. (pair): A 1000 30 uk

Dimensions:

Outer: 275 x 155 x 60 mm

Inner: 210 x 110 x (2 x 30) mm

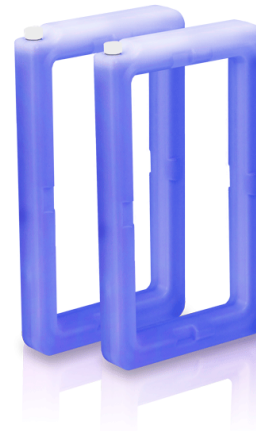
Colour: PE natural

Fluid: blue

Weight: $2 \times 0.34 = 0.68$ kg

Sealing: laminated aluminium film and protective cap

Will maintain a temperature between 2°C ... 8°C



22C TempShell – Element

Order No. (pair): A 1000 35 uk

Dimensions:

Outer: 275 x 155 x 60 mm

Inner: 210 x 110 x 30 mm

Colour: PE natural

Fluid: green

Weight: $2 \times 0.54 = 1.08$ kg

Sealing: laminated aluminium film and protective cap

Liquid crystal thermometer 10°C ... 40°C

Shows the current temperature of the element

Will maintain a temperature between 20°C ... 24°C



22C TempShell – Frame

Order No. (pair): A 1000 36 uk

Dimensions:

Outer: 275 x 155 x 60 mm

Inner: 210 x 110 x (2 x 30) mm

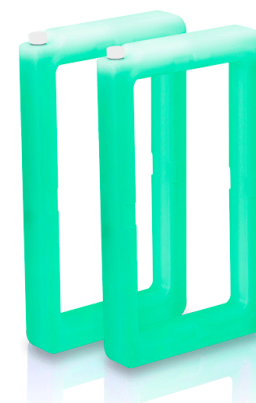
Colour: PE natural

Fluid: green

Weight: $2 \times 0.34 = 0.68$ kg

Sealing: laminated aluminium film and protective cap

Will maintain a temperature between 20°C ... 24°C



37C TempShell – Element

Order No. (pair): A 1000 41 uk

Dimensions:

Outer: 275 x 155 x 60 mm

Inner: 210 x 110 x 30 mm

Colour: PE natural

Fluid: red

Weight: $2 \times 0.54 = 1.08$ kg

Sealing: laminated aluminium film and protective cap

Liquid crystal thermometer 10°C ... 40°C

Shows the current temperature of the element

Will maintain a temperature between 36°C ... 38°C



37C TempShell – Frame

Order No. (pair): A 1000 42 uk

Dimensions:

Outer: 275 x 155 x 60 mm

Inner: 210 x 110 x (2 x 30) mm

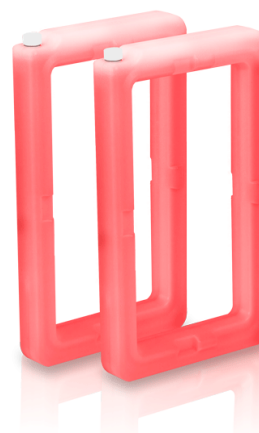
Colour: PE natural

Fluid: red

Weight: $2 \times 0.34 = 0.68$ kg

Sealing: laminated aluminium film and protective cap

Will maintain a temperature between 36°C ... 38°C



-18C TempShell – Element

Order No. (pair): A 1000 17 uk

Dimensions:

Outer: 275 x 155 x 60 mm

Inner: 210 x 110 x 30 mm

Colour: PE natural

Fluid: transparent white

Weight: $2 \times 0.75 = 1.5$ kg

Sealing: laminated aluminium film and protective cap

Will maintain a temperature between -22°C ... -18°C



-18C TempShell – Frame

Order No. (pair): A 1000 18 uk

Dimensions:

Outer: 275 x 155 x 60 mm

Inner: 210 x 110 x (2 x 30) mm

Colour: PE natural

Fluid: transparent white

Weight: $2 \times 0.5 = 1.0$ kg

Sealing: laminated aluminium film and protective cap

Will maintain a temperature between -22°C ... -18°C



-21C TempShell – Element

Order No. (pair): A 1000 11 uk

Dimensions:

Outer: 275 x 155 x 60 mm

Inner: 210 x 110 x 30 mm

Colour: PE natural

Fluid: transparent white

Weight: $2 \times 0.72 = 1.44$ kg

Sealing: laminated aluminium film and protective cap

Will maintain a temperature between -23°C ... -19°C



-21C TempShell – Rahmen

Order No. (pair): A 1000 12 uk

Dimensions:

Outer: 275 x 155 x 60 mm

Inner: 210 x 110 x (2 x 30) mm

Colour: PE natural

Fluid: transparent white

Weight: $2 \times 0.46 = 0.92$ kg

Sealing: laminated aluminium film and protective cap

Will maintain a temperature between -23°C ... -19°C



-30C TempShell – Element

Order No. (pair): A 1000 05 uk

Dimensions:

Outer: 275 x 155 x 60 mm

Inner: 210 x 110 x 30 mm

Colour: PE natural

Fluid: orange

Weight: $2 \times 0.76 = 1.52$ kg

Sealing: laminated aluminium film and protective cap

Will maintain a temperature between -32°C ... -30°C



-30C TempShell – Frame

Order No. (pair): A 1000 06 uk

Dimensions:

Outer: 275 x 155 x 60 mm

Inner: 210 x 110 x (2 x 30) mm

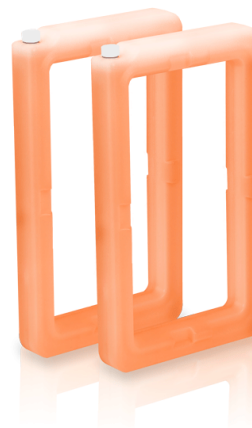
Colour: PE natural

Fluid: orange

Weight: $2 \times 0.48 = 0.96$ kg

Sealing: laminated aluminium film and protective cap

Will maintain a temperature between -32°C ... -30°C



Ice Accu

ICE Accu S 170ml

Order No.: A 0800 19 uk

Size: 220 x 120 x 11 mm

Colour: PE natural

Fluid: transparent

Weight: 0.22 kg

Sealing: laminated aluminium film and protective cap

Packaging unit: 1 tray contains 52 pieces, 1 pallet = 27 trays = 1404 pieces



ICE Accu S 220ml

Order No.: A 0800 20 uk

Size: 270 x 130 x 11 mm

Colour: PE natural

Fluid: transparent

Weight: 0.34 kg

Sealing: laminated aluminium film and protective cap

Packaging unit: 1 tray contains 56 pieces, 1 pallet = 16 trays = 896 pieces



ICE Accu S 260ml

Order No.: A 0800 21 uk

Size: 280 x 155 x 11 mm

Colour: PE natural

Fluid: transparent

Weight: 0.38 kg

Sealing: laminated aluminium film and protective cap

Packaging unit: 1 tray contains 54 pieces, 1 pallet = 16 trays = 864 pieces



ICE Accu S 500ml

Order No.: A 0800 22 uk

Size: 320 x 245 x 11 mm

Colour: PE natural

Fluid: transparent

Weight: 0.8 kg

Sealing: laminated aluminium film and protective cap

Packaging unit: 1 tray contains 24 pieces, 1 pallet = 20 trays = 480 pieces



ICE Accu S 1L

Order No.: A 0810 04 uk

Size: 360 x 210 x 15 mm

Colour: PE natural

Fluid: transparent

Weight: 1.1 kg

Sealing: plastic plug

Packaging unit: 1 tray contains 12 pieces



Ice Accu

ICE Accu 200ml

Order No.: A 1000 19 uk

Size: 165 x 88 x 21 mm

Colour: PE natural

Fluid: transparent blue

Weight: 0.22 kg

Seamless and leak-proof

Option of customer logo

Packaging unit: 1 tray contains 54 pieces, 1 pallet = 48 trays = 2592 pieces



ICE Accu 300ml

Order No.: A 1000 23 uk

Size: 210 x 90 x 20 mm

Colour: PE natural

Fluid: transparent blue

Weight: 0.32 kg

Seamless and leak-proof

Option of customer logo

Packaging unit: 1 tray contains 54 pieces, 1 pallet = 40 trays = 2160 pieces



ICE Accu 400ml

Order No.: A 1000 20 uk

Size: 170 x 85 x 35 mm

Colour: PE natural

Fluid: transparent blue

Weight: 0.46 kg

Seamless and leak-proof

Option of customer logo

Packaging unit: 1 tray contains 30 pieces, 1 pallet = 48 trays = 1440 pieces



ICE Accu 1L

Order No.: A 1000 21 uk

Size: 210 x 160 x 40 mm

Colour: PE natural

Fluid: transparent

Weight: 1.1 kg

Sealing: plastic plug

Packaging unit: 1 tray contains 13 pieces, 1 pallet = 40 trays = 520 pieces



ICE Accu 2L

Order No.: A 0900 04 uk

Size: 319 x 275 x 35 mm

Colour: PE natural

Fluid: transparent

Weight: 2.7 kg

Sealing: plastic plug

Packaging unit: 1 tray = 10 pieces



ICE Accu 3L

Order No.: A 1000 22 uk

Size: 465 x 275 x 35 mm

Colour: PE natural

Fluid: transparent

Weight: 3.65 kg

Sealing: plastic plug

Packaging unit: 1 tray = 5 pieces



Gel Accu 200ml

Order No.: A 0700 02 uk

Size: 165 x 88 x 21 mm

Colour: PE natural

Fluid: thermo gel (blue)

Weight: 0.22 kg

Seamless and leak-proof

Will maintain a temperature between -2°C ... +/-0°C

Packaging unit: 1 tray contains 54 pieces, 1 pallet = 40 trays = 2160 pieces



Gel Accu 300ml

Order No.: A 0700 03 uk

Size: 210 x 90 x 20 mm

Colour: PE natural

Fluid: thermo gel (blue)

Weight: 0.32 kg

Seamless and leak-proof

Will maintain a temperature between -2°C ... +/-0°C

Packaging unit: 1 tray contains 54 pieces, 1 pallet = 40 trays = 2160 pieces



Gel Accu 400ml

Order No.: A 0700 04 uk

Size: 170 x 85 x 35 mm

Colour: PE natural

Fluid: thermo gel (blue)

Weight: 0.44 kg

Seamless and leak-proof

Will maintain a temperature between -2°C ... +/-0°C

Packaging unit: 1 tray contains 30 pieces, 1 pallet = 48 trays = 1440 pieces



Gel Accu 600ml

Order No.: A 0700 06 uk

Size: 190 x 121 x 34 mm

Colour: PE natural

Fluid: thermo gel (blue)

Weight: 0.65 kg

Sealing: laminated aluminium film and protective cap

Will maintain a temperature between -2°C ... +/- 0°C



Gel Accu 700ml

Order No.: A 0700 07 uk

Size: 210 x 135 x 30 mm

Colour: PE natural

Fluid: thermo gel (blue)

Weight: 0.75 kg

Sealing: laminated aluminium film and protective cap

Will maintain a temperature between -2°C ... $\pm 0^{\circ}\text{C}$



Gel Accu S 1000ml

Order No.: A 0700 11 uk

Size: 360 x 210 x 15 mm

Colour: PE natural

Fluid: thermo gel (blue)

Weight: 1.1 kg

Sealing: laminated aluminium film and protective cap

Will maintain a temperature between -2°C ... $\pm 0^{\circ}\text{C}$



Gel Accu 1L

Order No.: A 0700 10 uk

Size: 210 x 160 x 40 mm

Colour: PE natural

Fluid: thermo gel (blue)

Weight: 1.1 kg

Sealing: laminated aluminium film and protective cap

Will maintain a temperature between -2°C ... $\pm 0^{\circ}\text{C}$



Gel Accu 2L

Order No.: A 0700 20 uk

Size: 319 x 275 x 35 mm

Colour: PE natural

Fluid: thermo gel (blue)

Weight: 3.00 kg

Sealing: laminated aluminium film and protective cap

Will maintain a temperature between -2°C ... $\pm 0^{\circ}\text{C}$



Gel Accu 3L

Order No.: A 0700 30 uk

Size: 465 x 275 x 35 mm

Colour: PE natural

Fluid: thermo gel (blue)

Weight: 3.80 kg

Sealing: laminated aluminium film and protective cap

Will maintain a temperature between -2°C ... $\pm 0^{\circ}\text{C}$



-30°C Freeze Element

-30C Freeze Element S 170ml

Order No.: A 0800 01 uk

Size: 220 x 120 x 11 mm

Colour: PE natural

Fluid: orange

Weight: 0.3 kg

Sealing: laminated aluminium film and protective cap

Will maintain a temperature between -32°C ... -30°C



-30C Freeze Element S 220ml

Order No.: A 0800 02 uk

Size: 270 x 130 x 11 mm

Colour: PE natural

Fluid: orange

Weight: 0.35 kg

Sealing: laminated aluminium film and protective cap

Will maintain a temperature between -32°C ... -30°C



-30C Freeze Element S 260ml

Order No.: A 0800 03 uk

Size: 280 x 155 x 11 mm

Colour: PE natural

Fluid: orange

Weight: 0.4 kg

Sealing: laminated aluminium film and protective cap

Will maintain a temperature between -32°C ... -30°C



-30C Freeze Element S 500ml

Order No.: A 0800 04 uk

Size: 320 x 245 x 11 mm

Colour: PE natural

Fluid: orange

Weight: 0.8 kg

Sealing: laminated aluminium film and protective cap

Will maintain a temperature between -32°C ... -30°C



-30C Freeze Element S 1000ml

Order No.: A 0810 08 uk

Size: 360 x 210 x 18 mm

Colour: PE natural

Fluid: orange

Weight: 1.4 kg

Sealing: laminated aluminium film and protective cap

Will maintain a temperature between -32°C ... -30°C



-30C Freeze Element 200ml

Order No.: A 1000 01 uk

Size: 165 x 88 x 21 mm

Colour: PE natural

Fluid: orange

Weight: 0.3 kg

Sealing: laminated aluminium film and protective cap

Will maintain a temperature between -32°C ... -30°C



-30°C Freeze Element

-30C Freeze Element 300ml

Order No.: A 0820 08 uk

Size: 210 x 88 x 21 mm

Colour: PE natural

Fluid: orange

Weight: 0.4 kg

Sealing: laminated aluminium film and protective cap

Will maintain a temperature between -32°C ... -30°C



-30C Freeze Element 400ml

Order No.: A 0900 15 uk

Size: 170 x 85 x 35 mm

Colour: PE natural

Fluid: orange

Weight: 0.55 kg

Cap-free design

Will maintain a temperature between -32°C ... -30°C



-30C Freeze Element 600ml

Order No.: A 0900 08 uk

Size: 190 x 121 x 34 mm

Colour: PE natural

Fluid: orange

Weight: 0.82 kg

Sealing: laminated aluminium film and protective cap

Will maintain a temperature between -32°C ... -30°C



-30C Freeze Element 700ml

Order No.: A 0850 08 uk

Size: 210 x 135 x 30 mm

Colour: PE natural

Fluid: orange

Weight: 0.95 kg

Sealing: laminated aluminium film and protective cap

Will maintain a temperature between -32°C ... -30°C



-30C Freeze Element 1L

Order No.: A 1000 03 uk

Size: 210 x 160 x 40 mm

Colour: PE natural

Fluid: orange

Weight: 1.5 kg

Sealing: laminated aluminium film and protective cap

Will maintain a temperature between -32°C ... -30°C



-30C Freeze Element 2L

Order No.: A 0900 01 uk

Size: 319x 275 x 35 mm

Colour: PE natural

Fluid: orange

Weight: 3.55 kg

Sealing: laminated aluminium film and protective cap

Will maintain a temperature between -32°C ... -30°C



-30C Freeze Element 3L

Order No.: A 1000 04 uk

Size: 465 x 275 x 35 mm

Colour: PE natural

Fluid: orange

Weight: 4.4 kg

Sealing: laminated aluminium film and protective cap

Will maintain a temperature between -32°C ... -30°C



-21°C Freeze Element

-21C Freeze Element S 170ml

Order No.: A 0800 07 uk

Size: 220 x 120 x 11 mm

Colour: PE natural

Fluid: transparent white

Weight: 0.3 kg

Sealing: laminated aluminium film and protective cap

Will maintain a temperature between -23°C ... -19°C



-21C Freeze Element S 220ml

Order No.: A 0800 08 uk

Size: 270 x 130 x 11 mm

Colour: PE natural

Fluid: transparent white

Weight: 0.35 kg

Sealing: laminated aluminium film and protective cap

Will maintain a temperature between -23°C ... -19°C



-21C Freeze Element S 260ml

Order No.: A 0800 09 uk

Size: 280 x 155 x 11 mm

Colour: PE natural

Fluid: transparent white

Weight: 0.4 kg

Sealing: laminated aluminium film and protective cap

Will maintain a temperature between -23°C ... -19°C



-21C Freeze Element S 500ml

Order No.: A 0800 10 uk

Size: 320 x 245 x 11 mm

Colour: PE natural

Fluid: transparent white

Weight: 0.8 kg

Sealing: laminated aluminium film and protective cap

Will maintain a temperature between -23°C ... -19°C



-21C Freeze Element S 1000ml

Order No.: A 0810 07 uk

Size: 360 x 210 x 18 mm

Colour: PE natural

Fluid: transparent white

Weight: 1.3 kg

Sealing: laminated aluminium film and protective cap

Will maintain a temperature between -23°C ... -19°C



-21C Freeze Element 200ml

Order No.: A 1000 07 uk

Size: 165 x 88 x 21 mm

Colour: PE natural

Fluid: transparent white

Weight: 0.25 kg

Sealing: laminated aluminium film and protective cap

Will maintain a temperature between -23°C ... -19°C



-21C Freeze Element 300ml

Order No.: A 0820 07 uk

Size: 210 x 88 x 21 mm

Colour: PE natural

Fluid: transparent white

Weight: 0.4 kg

Sealing: laminated aluminium film and protective cap

Will maintain a temperature between -23°C ... -19°C



-21°C Freeze Element

-21C Freeze Element 400ml

Order No.: A 1000 08 uk

Size: 170 x 85 x 35 mm

Colour: PE natural

Fluid: transparent white

Weight: 0.5kg

Cap-free design

Will maintain a temperature between -23°C ... -19°C



-21 C Freeze Element 600ml

Order No.: A 0900 09 uk

Size: 190 x 121 x 34 mm

Colour: PE natural

Fluid: transparent white

Weight: 0.82 kg

Sealing: laminated aluminium film and protective cap

Will maintain a temperature between -23°C...-19°C



-21 C Freeze Element 700ml

Order No.: A 0850 07 uk

Size: 210 x 135 x 30 mm

Colour: PE natural

Fluid: transparent white

Weight: 0.9 kg

Sealing: laminated aluminium film and protective cap

Will maintain a temperature between -23°C...-19°C



-21C Freeze Element 1L

Order No.: A 1000 09 uk

Size: 210 x 160 x 40 mm

Colour: PE natural

Fluid: transparent white

Weight: 1.45 kg

Sealing: laminated aluminium film and protective cap

Will maintain a temperature between -23°C ... -19°C



-21C Freeze Element 2L

Order No.: A 0900 02 uk

Size: 319x 275 x 35 mm

Colour: PE natural

Fluid: transparent white

Weight: 3.4 kg

Sealing: laminated aluminium film and protective cap

Will maintain a temperature between -23°C ... -19°C



-21C Freeze Element 3L

Order No.: A 1000 10 uk

Size: 465 x 275 x 35 mm

Colour: PE natural

Fluid: transparent white

Weight: 4.3 kg

Sealing: laminated aluminium film and protective cap

Will maintain a temperature between -23°C ... -19°C



-18°C Freeze Element

-18 C Freeze Element S 170ml

Order No.: A 0800 13 uk

Size: 220 x 120 x 11 mm

Colour: PE natural

Fluid: transparent white

Weight: 0.3 kg

Sealing: laminated aluminium film and protective cap

Will maintain a temperature between -20°C ... -18°C



-18 C Freeze Element S 220ml

Order No.: A 0800 14 uk

Size: 270 x 130 x 11 mm

Colour: PE natural

Fluid: transparent white

Weight: 0.35 kg

Sealing: laminated aluminium film and protective cap

Will maintain a temperature between -20°C ... -18°C



-18 C Freeze Element S 260ml

Order No.: A 0800 15 uk

Size: 280 x 155 x 11 mm

Colour: PE natural

Fluid: transparent white

Weight: 0.4 kg

Sealing: laminated aluminium film and protective cap

Will maintain a temperature between -20°C ... -18°C



-18 C Freeze Element S 500ml

Order No.: A 0800 16 uk

Size: 320 x 245 x 11 mm

Colour: PE natural

Fluid: transparent white

Weight: 0.8 kg

Sealing: laminated aluminium film and protective cap

Will maintain a temperature between -20°C ... -18°C



-18 C Freeze Element S 1000ml

Order No.: A 0810 06 uk

Size: 360 x 210 x 18 mm

Colour: PE natural

Fluid: transparent white

Weight: 1.4 kg

Sealing: laminated aluminium film and protective cap

Will maintain a temperature between -20°C ... -18°C



-18 C Freeze Element 200ml

Order No.: A 1000 13 uk

Size: 165 x 88 x 21 mm

Colour: PE natural

Fluid: transparent white

Weight: 0.23 kg

Sealing: laminated aluminium film and protective cap

Will maintain a temperature between -20°C ... -18°C



-18 C Freeze Element 300ml

Order No.: A 0820 06 uk

Size: 210 x 88 x 21 mm

Colour: PE natural

Fluid: transparent white

Weight: 0.4 kg

Sealing: laminated aluminium film and protective cap

Will maintain a temperature between -20°C ... -18°C



-18°C Freeze Element

-18 C Freeze Element 400ml

Order No.: A 1000 14 uk

Size: 170 x 85 x 35 mm

Colour: PE natural

Fluid: transparent white

Weight: 0.44 kg

Cap-free design

Will maintain a temperature between -20°C ... -18°C



-18 C Freeze Element 600ml

Order No.: A 0900 10 uk

Size: 190 x 121 x 34 mm

Colour: PE natural

Fluid: transparent white

Weight: 0.84 kg

Sealing: laminated aluminium film and protective cap

Will maintain a temperature between -20°C...-18°C



-18 C Freeze Element 700ml

Order No.: A 0850 06 uk

Size: 210 x 135 x 30 mm

Colour: PE natural

Fluid: transparent white

Weight: 0.95 kg

Sealing: laminated aluminium film and protective cap

Will maintain a temperature between -20°C...-18°C



-18 C Freeze Element 1L

Order No.: A 1000 15 uk

Size: 210 x 160 x 40 mm

Colour: PE natural

Fluid: transparent white

Weight: 1.4 kg

Sealing: laminated aluminium film and protective cap

Will maintain a temperature between -20°C ... -18°C



-18 C Freeze Element 2L

Order No.: A 0900 03 uk

Size: 319 x 275 x 35 mm

Colour: PE natural

Fluid: transparent white

Weight: 3.4 kg

Sealing: laminated aluminium film and protective cap

Will maintain a temperature between -20°C ... -18°C



-18 C Freeze Element 3L

Order No.: A 1000 16 uk

Size: 465 x 275 x 35 mm

Colour: PE natural

Fluid: transparent white

Weight: 4.3 kg

Sealing: laminated aluminium film and protective cap

Will maintain a temperature between -20°C ... -18°C



4 C Accu S 170ml

Order No.: A 0800 25 uk

Size: 220 x 120 x 11 mm

Colour: PE natural

Fluid: blue

Weight: 0.2 kg

Sealing: laminated aluminium film and protective cap

Will maintain a temperature between 2°C ... 8°C



4 C Accu S 220ml

Order No.: A 0800 26 uk

Size: 270 x 130 x 11 mm

Colour: PE natural

Fluid: blue

Weight: 0.25 kg

Sealing: laminated aluminium film and protective cap

Will maintain a temperature between 2°C ... 8°C



4 C Accu S 260ml

Order No.: A 0800 27 uk

Size: 280 x 155 x 11 mm

Colour: PE natural

Fluid: blue

Weight: 0.3 kg

Sealing: laminated aluminium film and protective cap

Will maintain a temperature between 2°C ... 8°C



4 C Accu S 500ml

Order No.: A 0800 28 uk

Size: 320 x 245 x 11 mm

Colour: PE natural

Fluid: blue

Weight: 0.6 kg

Sealing: laminated aluminium film and protective cap

Will maintain a temperature between 2°C ... 8°C



4 C Accu S 1000ml

Order No.: A 0900 23 uk

Size: 360 x 210 x 18 mm

Colour: PE natural

Fluid: blue

Weight: 0.98 kg

Sealing: laminated aluminium film and protective cap

Will maintain a temperature between 2°C ... 8°C



4 C Accu 200ml

Order No.: A 1000 25 uk

Size: 165 x 88 x 21 mm

Colour: PE natural

Fluid: blue

Weight: 0.2 kg

Sealing: laminated aluminium film and protective cap

Will maintain a temperature between 2°C ... 8°C



4 C Accu 300ml

Order No.: A 0820 03 uk

Size: 210 x 88 x 21 mm

Colour: PE natural

Fluid: blue

Weight: 0.3 kg

Sealing: laminated aluminium film and protective cap

Will maintain a temperature between 20°C ... 24°C



4 C Accu 400ml

Order No.: A 0900 19 uk

Size: 170 x 90 x 35 mm

Colour: PE natural

Fluid: blue

Weight: 0.35 kg

Sealing: laminated aluminium film and protective cap

Will maintain a temperature between 2°C ... 8°C



4 C Accu 600ml

Order No.: A 0900 11 uk

Size: 190 x 121 x 34 mm

Colour: PE natural

Fluid: blue

Weight: 0.5 kg

Sealing: laminated aluminium film and protective cap

Will maintain a temperature between 2°C ... 8°C



4 C Accu 700ml

Order No.: A 0850 03 uk

Size: 210 x 135 x 30 mm

Colour: PE natural

Fluid: blue

Weight: 0.6 kg

Sealing: laminated aluminium film and protective cap

Will maintain a temperature between 2°C ... 8°C



4 C Accu 1L

Order No.: A 1000 27 uk

Size: 210 x 160 x 40 mm

Colour: PE natural

Fluid: blue

Weight: 1.05 kg

Sealing: laminated aluminium film and protective cap

Will maintain a temperature between 2°C ... 8°C



4 C Accu 2L

Order No.: A 0900 05 uk

Size: 319 x 275 x 35 mm

Colour: PE natural

Fluid: blue

Weight: 2.4 kg

Sealing: laminated aluminium film and protective cap

Will maintain a temperature between 2°C ... 8°C



4 C Accu 3L

Order No.: A 1000 28 uk

Size: 465 x 275 x 35 mm

Colour: PE natural

Fluid: blue

Weight: 3.1 kg

Sealing: laminated aluminium film and protective cap

Will maintain a temperature between 2°C ... 8°C



22 C Accu S 170ml

Order No.: A 0800 31 uk

Size: 220 x 120 x 11 mm

Colour: PE natural

Fluid: green

Weight: 0.2 kg

Sealing: laminated aluminium film and protective cap

Will maintain a temperature between 20°C ... 24°C



22 C Accu S 220ml

Order No.: A 0800 32 uk

Size: 270 x 130 x 11 mm

Colour: PE natural

Fluid: green

Weight: 0.25 kg

Sealing: laminated aluminium film and protective cap

Will maintain a temperature between 20°C ... 24°C



22 C Accu S 260ml

Order No.: A 0800 33 uk

Size: 280 x 155 x 11 mm

Colour: PE natural

Fluid: green

Weight: 0.3 kg

Sealing: laminated aluminium film and protective cap

Will maintain a temperature between 20°C ... 24°C



22 C Accu S 500ml

Order No.: A 0800 34 uk

Size: 320 x 245 x 11 mm

Colour: PE natural

Fluid: green

Weight: 0.6 kg

Sealing: laminated aluminium film and protective cap

Will maintain a temperature between 20°C ... 24°C



22 C Accu S 1000ml

Order No.: A 0810 02 uk

Size: 360 x 210 x 18 mm

Colour: PE natural

Fluid: green

Weight: 0.9 kg

Sealing: laminated aluminium film and protective cap

Will maintain a temperature between 20°C ... 24°C



22 C Accu 200ml

Order No.: A 1000 31 uk

Size: 165 x 88 x 21 mm

Colour: PE natural

Fluid: green

Weight: 0.2 kg

Sealing: laminated aluminium film and protective cap

Will maintain a temperature between 20°C ... 24°C



22 C Accu 300ml

Order No.: A 0820 02 uk

Size: 210 x 88 x 21 mm

Colour: PE natural

Fluid: green

Weight: 0.25 kg

Sealing: laminated aluminium film and protective cap

Will maintain a temperature between 20°C ... 24°C



22 C Accu 400ml

Order No.: A 0900 20 uk

Size: 170 x 90 x 35 mm

Colour: PE natural

Fluid: green

Weight: 0.3 kg

Sealing: laminated aluminium film and protective cap

Will maintain a temperature between 20°C ... 24°C



22 C Accu 600ml

Order No.: A 0900 12 uk

Size: 190 x 121 x 34 mm

Colour: PE natural

Fluid: green

Weight: 0.54 kg

Sealing: laminated aluminium film and protective cap

Will maintain a temperature between 20°C ... 24°C



22 C Accu 700ml

Order No.: A 0850 02 uk

Size: 210 x 135 x 30 mm

Colour: PE natural

Fluid: green

Weight: 0.6 kg

Sealing: laminated aluminium film and protective cap

Will maintain a temperature between 20°C ... 24°C



22 C Accu 1L

Order No.: A 1000 33 uk

Size: 210 x 160 x 40 mm

Colour: PE natural

Fluid: green

Weight: 1.0 kg

Sealing: laminated aluminium film and protective cap

Will maintain a temperature between 20°C ... 24°C



22 C Accu 2L

Order No.: A 0900 06 uk

Size: 319 x 275 x 35 mm

Colour: PE natural

Fluid: green

Weight: 2.55 kg

Sealing: laminated aluminium film and protective cap

Will maintain a temperature between 20°C ... 24°C



22 C Accu 3L

Order No.: A 1000 34 uk

Size: 465 x 275 x 35 mm

Colour: PE natural

Fluid: green

Weight: 3.1 kg

Sealing: laminated aluminium film and protective cap

Will maintain a temperature between 20°C ... 24°C



37 C Accu S 170ml

Order No.: A 0800 37 uk

Size: 220 x 120 x 11 mm

Colour: PE natural

Fluid: red

Weight: 0.2 kg

Sealing: laminated aluminium film and protective cap

Will maintain a temperature between 36°C ... 38°C



37 C Accu S 220ml

Order No.: A 0800 38 uk

Size: 270 x 130 x 11 mm

Colour: PE natural

Fluid: red

Weight: 0.25 kg

Sealing: laminated aluminium film and protective cap

Will maintain a temperature between 36°C ... 38°C



37 C Accu S 260ml

Order No.: A 0800 39 uk

Size: 280 x 155 x 11 mm

Colour: PE natural

Fluid: red

Weight: 0.3 kg

Sealing: laminated aluminium film and protective cap

Will maintain a temperature between 36°C ... 38°C



37 C Accu S 500ml

Order No.: A 0800 40 uk

Size: 320 x 245 x 11 mm

Colour: PE natural

Fluid: red

Weight: 0.6 kg

Sealing: laminated aluminium film and protective cap

Will maintain a temperature between 36°C ... 38°C



37 C Accu S 1000ml

Order No.: A 0810 01 uk

Size: 360 x 210 x 18 mm

Colour: PE natural

Fluid: red

Weight: 0.95 kg

Sealing: laminated aluminium film and protective cap

Will maintain a temperature between 36°C ... 38°C



37 C Accu 200ml

Order No.: A 1000 37 uk

Size: 165 x 88 x 21 mm

Colour: PE natural

Fluid: red

Weight: 0.2 kg

Sealing: laminated aluminium film and protective cap

Will maintain a temperature between 36°C ... 38°C



37 C Accu 300ml

Order No.: A 0820 01 uk

Size: 210 x 88 x 21 mm

Colour: PE natural

Fluid: red

Weight: 0.25 kg

Sealing: laminated aluminium film and protective cap

Will maintain a temperature between 36°C ... 38°C



37 C Accu 400ml

Order No.: A 0900 21 uk

Size: 170 x 90 x 35 mm

Colour: PE natural

Fluid: red

Weight: 0.35 kg

Sealing: laminated aluminium film and protective cap

Will maintain a temperature between 36°C ... 38°C



37 C Accu 600ml

Order No.: A 0900 13 uk

Size: 190 x 121 x 34 mm

Colour: PE natural

Fluid: red

Weight: 0.52 kg

Sealing: laminated aluminium film and protective cap

Will maintain a temperature between 36°C ... 38°C



37 C Accu 700ml

Order No.: A 0850 01 uk

Size: 210 x 135 x 30 mm

Colour: PE natural

Fluid: red

Weight: 0.6 kg

Sealing: laminated aluminium film and protective cap

Will maintain a temperature between 36°C ... 38°C



37 C Accu 1L

Order No.: A 1000 39 uk

Size: 210 x 160 x 40 mm

Colour: PE natural

Fluid: red

Weight: 0.95 kg

Sealing: laminated aluminium film and protective cap

Will maintain a temperature between 36°C ... 38°C



37 C Accu 2L

Order No.: A 0900 07 uk

Size: 319 x 275 x 35 mm

Colour: PE natural

Fluid: red

Weight: 2.4 kg

Sealing: laminated aluminium film and protective cap



37 C Accu 3L

Order No.: A 1000 40 uk

Size: 465 x 275 x 35 mm

Colour: PE natural

Fluid: red

Weight: 3.25 kg

Sealing: laminated aluminium film and protective cap

Will maintain a temperature between 36°C ... 38°C



Gel Packs

GelPack 100

Order No.: A 1000 43 uk

Size: 105 x 105 x 10 mm

Filling: colourless transparent gel

Weight: 0.1 kg

Soft ice pack with high cooling effect

Remains flexible at a temperature as low as -10°C

External material is food-safe and leak-proof

Quantity per cardboard box: 48 pieces



GelPack 200

Order No.: A 1000 44 uk

Size: 185 x 120 x 10 mm

Filling: blue transparent gel

Weight: 0.2 kg

Soft ice pack with high cooling effect

Remains flexible at a temperature as low as -10°C

External material is food-safe and leak-proof

Quantity per cardboard box: 24 pieces



GelPack 600

Order No.: A 1000 46 uk

Size: 240 x 180 x 20 mm

Filling: blue transparent gel

Weight: 0.6 kg

Soft ice pack with high cooling effect

Remains flexible at a temperature as low as -10°C

External material is food-safe and leak-proof

Quantity per cardboard box: 12 pieces



GelPack 800

Order No.: A 1000 47 uk

Size: 300 x 220 x 20 mm

Filling: blue transparent gel

Weight: 0.8 kg

Soft ice pack with high cooling effect

Remains flexible at a temperature as low as -10°C

External material is food-safe and leak-proof

Quantity per cardboard box: 8 pieces



See also www.BlueLine-Travelbag.com

BlueLine Every day case

Order No.: B 1000 35 uk

Size: 200 x 110 x 45 mm

Colour: blue

Weight: 0.15 kg

For the transport of drugs, pens, lancets, lancing device and glucometer in everyday life. Compact with removable liner for pens to match the BlueLine Travelbag.



BlueLine Travelbag Accu Set

Order No.: B 1000 55 uk

Size: 270 x 160 x 110 mm

Colour: blue

Weight: 1.8 kg

Consists of a pair of 4°C cooling elements and two 200 ml Ice Accus.

For the transport of drugs at 2 to 8°C and use in the BlueLine Travelbag



BlueLine Travelbag

Order No.: B 1000 36 uk

Dimensions:

Outer: 270 x 160 x 110 mm

Inner (Useable Volume): 190 x 100 x 32 mm

Colour: blue

Weight: 2.05 kg

Including 4°C cooling elements, Ice Accus and Gelpacks
For the private transport of drugs from 2 to 8°C
Also available in the temperatures -30°C, -21°C, -18°C, 22°C and 37°C



BlueLine Travelbag (complete)

Order No.: B 1000 37 uk

Dimensions:

Outer: 270 x 160 x 150 mm

Inner (Useable Volume): 190 x 100 x 32 mm

Colour: blue

Weight: 2.2 kg

Including 4°C cooling elements, Ice Accus and Gelpacks
Every Day Case (Best. Nr.: B 1000 35 uk)
For the private transport of drugs at 2 to 8°C



TransPorter Blue Line 5 L

Order No.: B 1000 23 uk

Dimensions:

Outer: 464 x 257 x 230 mm

Inner: 290 x 170 x 130 mm

Colour: blue

Volume: 5L

Weight: 0.9 kg

Robust, ergonomic handles, stackable

dishwasher safe, sealable

Optional inclusion of RFID-chips for temperature monitoring and box identification.

Suitable for 1L elements and

TempShell system.



TransPorter Blue Line 10 L

Order No.: B 1000 34 uk

Dimensions:

Outer: 464 x 257 x 350 mm

Inner: 290 x 170 x 250 mm

Colour: blue

Volume: 10L

Weight: 1.24 kg

Robust, ergonomic handles, stackable

dishwasher safe, sealable

Optional inclusion of RFID-chips for temperature monitoring and box identification.

Suitable for 1L elements and

TempShell system.

Accessories:

UN3373 P650 kit B 090010 uk

Carton B 100061 uk



TransPorter Blue Line 20L

Order No.: B 1000 33 uk

Dimensions:

Outer: 488 x 368 x 340 mm

Inner: 321 x 285 x 230 mm

Colour: blue

Volume: 21L

Weight: 1.48 kg

Robust, ergonomic handles, stackable.

dishwasher safe, sealable

Optional inclusion of RFID-chips for temperature monitoring and box identification.

Suitable for 2L elements and

TempShell system.

Accessories

Shoulder strap B 100092 uk

Carton B 100060 uk



TransPorter BlueLine 30L

Order No.: B 1000 20 uk

Dimensions:

Outer: 646 x 368 x 340 mm

Inner: 470 x 285 x 230 mm

Colour: blue

Volume: 31L

Weight: 2.06 kg

Robust, ergonomic handles, stackable.

dishwasher safe, sealable

Optional inclusion of RFID-chips for temperature monitoring and box identification.

Suitable for 3L elements and

TempShell system

Accessories

Shoulder strap B 100093 uk

Carton B 100056 uk



TransPorter BlueLine 50 L

Order No.: B 1000 50 uk

Dimensions:

Outer: 646 x 368 x 500 mm

Inner: 470 x 285 x 395 mm

Colour: blue

Volume: 50L

Weight: 3.00 kg

Robust, ergonomic handles, stackable

dishwasher safe, sealable

Optional inclusion of RFID-chips for temperature monitoring and box identification.

Suitable for 3L temperature storage elements and

TempShell system

Accessories:

Carton B 100059 uk



Seal for Transport-Box

Order No.: B 1000 29 uk

Length of sealing strip: 255 mm

Overall length: 342 mm. Printing area: 43x21 mm

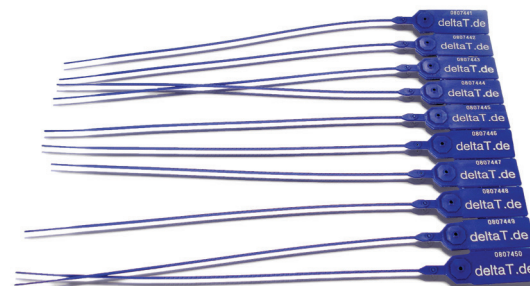
Material: Strong Plastic

Weight: 2 g

Consecutive numbering, suitable for

Transporter BlueLine Series and Silverbags

Packaging unit: 100 pieces



Shoulder Strap

B 1000 91 uk (for 10L Box)

B 1000 92 uk (for 20L Box)

B 1000 93 uk (for 30L Box)

Strap with shoulder pad for comfort

Colour: black

Only available for 10 to 30L



Cardboard Packaging

B 1000 62 uk (for 5L Box)

B 1000 61 uk (for 10L Box)

B 1000 60 uk (for 20L Box)

B 1000 56 uk (for 30L Box)

B 1000 59 uk (for 50L Box)

Protection for shipping by parcel post

In neutral, double wall design.



Customer Label

B 1000 44 uk

Your own logo on the transport box

Lid: 297 x 105 mm

Bottom: 85 x 55 mm

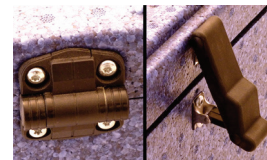
The same for all sizes



Lock System

B 1000 65 uk

The same for all sizes



Document Window

B 1000 43 uk

For documents of size 297 x 210 mm

Not available for 5L



P650 kit

B 0900 60 uk (for 5L Box)

B 0900 10 uk (for 10L Box)

B 0900 20 uk (for 20L Box)

B 0900 30 uk (for 30L Box)

B 0900 50 uk (for 50L Box)

Contains all necessary items

Products according to P650 ADR or
PI650 and IATA-DGR or ICAO-TI Standards
to transport in the BlueLine Boxes



BlueLine S 12L Set 5

Order No.: B 1100 08 uk

Dimensions:

Outer: 400 x 300 x 755 mm

Inner: 5 times 370 x 263 x 150 mm

Weight: 3.9 kg



BlueLine S 12L Complete

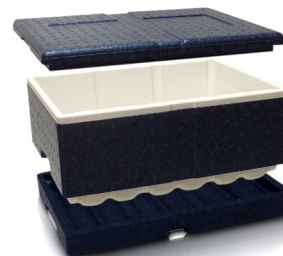
Order No.: B 1100 10 uk

Dimensions:

Outer: 400 x 300 x 215 mm

Inner: 370 x 263 x 150 mm

Weight: 1.16 kg



BlueLine S 12L Middle part

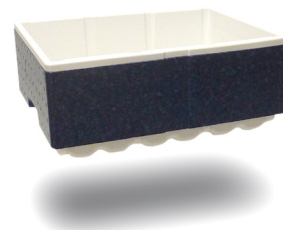
Order No.: B 1100 02 uk

Dimensions:

Outer: 400 x 300 x 166 mm

Inner: 370 x 263 x 132 mm

Weight: 0.66 kg

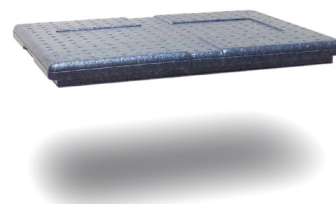


BlueLine S 12L Lid

Order No.: B 1100 03 uk

Dimensions: 400 x 300 x 36 mm

Weight: 0.2 kg



BlueLine S 12L Bottom

Order No.: B 1100 01 uk

Dimensions: 400 x 300 x 60 mm

Weight: 0.3 kg



Trolley

Order No.: B 1100 07 uk

Weight: 1.35 kg

to carry BlueLine S12L Set five
loaded with blood products



Cooling elements for BlueLine S 12L

-30C Accu S 265ml, -21C Accu S 265ml

4C Accu S 265ml, 18C Accu S 265ml

22C Accu S 265ml, 37C Accu S 265ml

see Accu sections of previous pages



BlueLine Bag 3L

Order No.: B 1000 03 uk

Dimensions: 270 x 130 x 180 mm

Colour: blue/black

Volume: 3L

Weight: 0.24 kg

Suitable 1 pair tempshell elements
with document pocket



BlueLine Bag 10L

Order No.: B 1002 10 uk

Dimensions: 310 x 180 x 260 mm

Colour: blue/black

Volume: 10L

Weight: 1.06 kg

suitable for 4 pairs of TempShell elements or one pair of
elements and 3 pairs of TempFrames, sealeable with document
pocket and shoulder strap.



BlueLine Bag 16L

Order No.: B 1002 16 uk

Dimensions: 380 x 200 x 330 mm

Colour: blue/black

Volume: 16L

Weight: 1.3 kg

suitable for 5 pairs of TempShell elements or combinations of
elements and TempFrames, sealeable with document pocket
and shoulder strap.



BlueLine Bag 30L

Order No.: B 1002 30 uk

Dimensions: 410 x 240 x 350 mm

Colour: blue/black

Volume: 30L

Weight: 2.1 kg

suitable for 10 pairs of TempShell elements or combinations of
elements and TempFrames, sealeable with document pocket
and shoulder strap.



Vacuum Boxes

MiniVacuumBox 16L. blue

Order No.: B 1000 07 uk

Dimensions: 410 x 240 x 350 mm

Colour: silver/black

Volume: 16L

Weight: 4.04 kg

Suitable for 5 pairs of TempShell elements or combinations of elements and TempShell frames

Sealable with double zipper, plastic interi



MiniVacuumCase

Order No.: B 1000 39 uk

Dimensions:

Outer: 422 x 250 x 415 mm

Inner: 335 x 165 x 305 mm

Colour: blue

Volume: 16L

Weight: 7.04 kg

Suitable for 5 pairs of TempShell elements or combinations of elements and TempShell frames

Robust plastic case with vacuum insulation

Locks with "butterfly" closures, shoulder strap

Carrying handle on lid, sealable, washable plastic interior



Courier Case

Order No.: B 1000 40 uk

Dimensions:

Outer: 415 x 245 x 320 mm

Inner: 325 x 160 x 215 mm

Colour: blue or black

Volume: 11L

Weight: 5.98 kg

Suitable for 3,5 pairs of TempShell elements or combinations of elements and TempShell frames

Robust plastic case with vacuum insulation, locks with "butterfly" closures

Shoulder strap, carrying handle on lid, sealable, washable plastic interior

Customized solutions possible - Volume: from 10L to 1000L



ThermoBox 160L

Order No.: B 1000 16 uk

Dimensions:

Outer: 800 x 600 x 750 mm

Inner: 680 x 470 x 480 mm

Footprint: half a euro-pallet

Colour: blue or black

Volume: about 160L

Weight: 45 kg

Robust transport containers with sealable lock and 20mm vacuum insulation



Vacuum Boxes

PharmaCase 16L

Order No.: B 1001 17 uk

Dimensions:

Outer: 450x280x445 mm

Inner: 335x165x305 mm

Weight: 9 kg

fits for: Accu 1L and TempShells



PharmaCase 20L

Order No.: B 1001 20 uk

Dimensions:

Outer: 440x442x320 mm

Inner: 321x285x200 mm

Weight: 12 kg

fits for: Accu 2L and TempShells



PharmaCase 30L

Order No.: B 1001 30 uk

Dimensions:

Outer: 670x470x360 mm

Inner: 470x285x200 mm

Weight: 14 Kg

fits for: Accu 3L and TempShells



PharmaCase 75L

Order No.: B 1001 05 uk

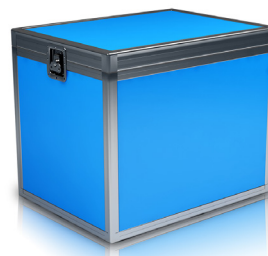
Dimensions:

Outer: 650x500x545 mm

Inner: 530x335x430 mm

Weight: 26 kg

fits for: Accu 3L, Accu 2L and Accu 1L



PharmaCase 100L

Order No.: B 1000 80 uk

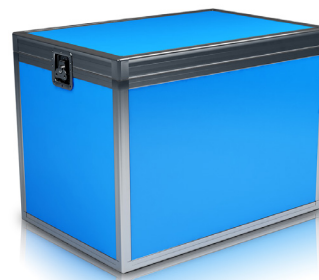
Dimensions:

Outer: 805x515x600 mm

Inner: 640x355x470 mm

Weight: 30 kg

fits for: Accu 3L in eight positions,
at sides, above and under the payload
Accu 1L and TempShells



PharmaCase 170L

Order No.: B 1000 16 uk

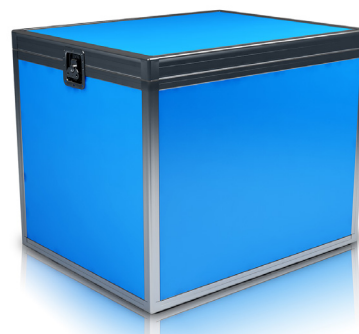
Dimensions:

Outer: 835x645x670 mm

Inner: 670x470x535 mm

Weight: 37 kg

Fits for: Accu 3L, Accu 2L and Accu 1L



Disposable Vacuum Box 16L

Order No.: B 1200 01 uk

Dimensions:

Outer: 420x250x385 mm

Inner: 340x170x310 mm

Weight: 4.5 kg

fits for: Accu 1L and TempShells



Disposable Vacuum Box 20L

Order No.: B 1200 02 uk

Dimensions:

Outer: 415x380x300 mm

Inner: 335x300x215 mm

Payload: 240x190x130 mm with 8x Accu1L

Weight: 4.7 kg

fits for: Accu 2L, Accu 1L and TempShells



Disposable Vacuum Box 30L

Order No.: B 1200 03 uk

Dimensions:

Outer: 560x380x295 mm

Inner: 480x300x210 mm

Payload: 380x190x200 mm with 8x Accu1L

Weight: 6.1 kg

fits for: Accu 3L, Accu 1L and TempShells



Disposable Vacuum Box 90L

Order No.: B 1200 04 uk

Dimensions:

Outer: 640x445x530 mm

Inner: 560x365x450 mm

Payload: 470x270x360 mm with 26x Accu1L

Weight: 11 kg

Fits for: Accu 3L, Accu 2L and Accu 1L



Disposable Vacuum Box 115L

Order No.: B 1200 05

Dimensions:

Outer: 750x460x550 mm

Inner: 665x375x465 mm

Payload: 545x275x420 mm with 27x Accu1L

Weight: 13.6 kg

fits for: Accu 3L, Accu 2L and Accu 1L



Disposable Vacuum Box 190L

Order No.: B 1200 06 uk

Dimensions:

Outer: 780x580x630 mm

Inner: 700x500x550 mm

Payload: 600x400x500mm with 39 x Accu1L

Weight: 18.6 kg

fits for: Accu 3L, Accu 2L and Accu 1L



Transport Boxes

TVB6 complete

Order No.: B 1000 52 uk

Dimensions:

Outer: 444 x 264 x 214 mm

Inner: 371 x 175 x 165 mm

Volume: 6L Colour: yellow/white

Weight: 1.2 kg

Hard transport case.

Outer container on request.

Insulation: PU foam.

Suitable for all Akku S 1000ml



TVB VIP 11L complete

Order No.: B 1000 17 uk

Dimensions:

Outer: 445 x 295 x 280 mm

Inner: 320 x 190 x 210 mm

Volume: 11L

Weight: 6.12 kg

Hard transport case.

Insulation: 50 mm PU foam.

Suitable for all 3L Elements



AluCase 23L

Order No.: B 1000 14 uk

Dimensions:

Outer: 580 x 395 x 275 mm

Inner: 470 x 285 x 165 mm

Weight: 5.54 kg

Sturdy aluminium box with polypropylene inner lining as well as 30 to 35 mm insulation.

Two side handles and one on the top of the box.

All handles with plastic coating. Two sealable snap closures. Stackable corners. Rubber seal between the box and lid. Cover fixed with textile belts. All add-on parts are fixed by rivets. Closing the lid and bottom stops dust.

Four handles and a document compartment on the lid.



BioHazardLogisticBox

Order No.: B 1000 18 uk

Dimensions of aluminium containers:

Outer: 385 x 285 x 343 mm

Dimensions of Neopor insulation insert:

Outer: 305 x 215 x 305 mm

Inner: 240 x 150 x 200 mm

Weight: 3.68 kg

Stable aluminium box with insulation jacket. Plastic covered handle on the lid. Sealable closure. Stackable.

Threaded design meets the requirements according to ADR, RID, IMDG Code, UN, ICAO TI and IATA for dangerous goods.

Accessories: Sliding lock bag 600 x 600 mm.

Liquid containment suction system 535 x 375 mm



Neopor Boxes

We also offer the complete system consisting of insulated box and cooling elements including validation!

MonoBox

Order No.: B 1000 08 uk

Dimensions: 390 x 290 x 230 mm

Colour: grey

Weight: 0.64 kg

Material: Neopor

Insulation: 60-80 mm

Neopor packaging for 1 pair of TempShell elements

Consisting of two equal halves



MonoTripleBox

Order No.: B 1000 09 uk

Dimensions: 390 x 290 x 290 mm

Colour: grey

Weight: 0.74 kg

Material: Neopor

Insulation: 60-80 mm

Neopor packaging for 2 pairs of TempShell of elements or frames

Consisting of one MonoBox half and one TripleBox half



TripleBox

Order No.: B 1000 10 uk

Dimensions: 390 x 290 x 350 mm

Colour: grey

Weight: 0.84 kg

Material: Neopor

Insulation: 60-80 mm

Neopor packaging for 3 pairs of TempShell elements or frames

Consisting of two equal halves



Bag for MonoTriple Boxes

Order No.: B 1100 09 uk

Dimensions: 400 x 300 x 300 mm

Colour: silver/black

Volume: 35L

Weight: 2.0 kg

Robust carrying case for Mono/Triple boxes
with document pocket and shoulder strap
Sealable



Outer boxes for MonoTriple Boxes

Order No.: B 1000 11 uk

Dimensions: 400 x 300 x 230-350 mm

Protects the MonoTriple Box with repeated use

Material: sturdy cardboard

One shipping unit contains 20 pieces



Styrofoam packaging

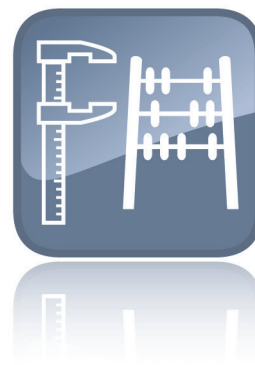
(No order number)

Size: Various sizes

Volume: From 2L to 200L

Material: EPS

Customer specific solutions



EPS Line 5L

Order No.: B 1000 90 uk

Dimensions:

Outer: 464x257x230 mm

Inner: 290x170x130 mm

Colour: white

Volume: 5 L

Weight: 0.4 kg

MoQ: 200 pcs.

Ergonomic handles, stackable, sealable

Possibility to place 1L cooling elements in 4 positions
above the transported goods

Suitable for 1L elements, TempShell system and IceAccus



EPS Line 10 L

Order No.: B 1000 95 uk

Dimensions:

Outer: 464 x 257 x 350 mm

Inner: 290 x 170 x 250 mm

Colour: white

Volume: 10 L

Weight: 0.5 kg

MoQ: 200 pcs.



EPS Line 20 L

Order No.: B 1000 96 uk

Dimensions:

Outer: 488 x 368 x 340 mm

Inner: 321 x 285 x 230 mm

Colour: white

Volume: 21 L

Weight: 0.8 kg

MoQ: 200 pcs.



EPS Line 30 L

Order No.: B 1000 97 uk

Dimensions:

Outer: 646 x 368 x 340 mm

Inner: 470 x 285 x 230 mm

Colour: white

Volume: 31 L

Weight: 1.0 kg

MoQ: 200 pcs.



EPS Line 50 L

Order No.: B 1000 98 uk

Dimensions:

Outer: 646 x 368 x 500 mm

Inner: 470 x 285 x 395 mm

Colour: white

Volume: 50 L

Weight: 1.8 kg



EPS Line 50L long range

Order No.: B 1000 24 uk

Dimensions:

Outer: 800x600x585mm

Inner: 470 x 285 x 395 mm

Colour: white

Volume: 50 L

Weight: 4.5 kg

Ergonomic handles, stackable, sealable

Positioning slots for ICE Accu S 0.9 and

4 C Accu S 1L

Transport time up to 120 hours possible



EPS VIP Line 50L long range

Order No.: B 1001 60 uk

Dimensions:

Outer: 800 x 600 x 585 mm

Inner (payload): 465 x 370 x 365 mm

Weight: 5.3 kg

Fits for 8 pieces of Accu S1L and 8 pieces ICE Accu S1L



EPS VIP Line 66L long range

Order No.: B 1001 70 uk

Dimensions:

Outer: 800x600x705mm

Inner (payload): 465 x 370 x 455 mm

Colour: white

Weight: 6.4 kg

Fits for 8 pieces of Accu S1L and 8 pieces ICE Accu S1L



EPS VIP Pallet Shipper 1200L Standard

Order No.: B 1005 15 uk

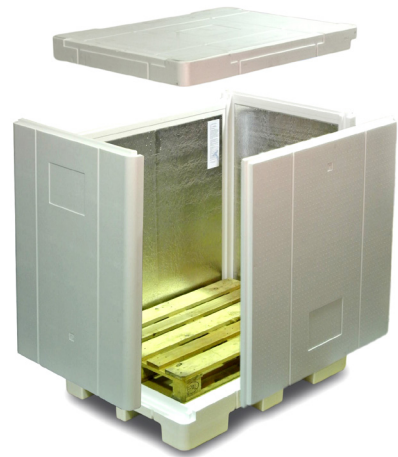
Dimensions:

Outer: 1400 x 1000 x 1600 mm

Inner (payload): 1200 x 800 x 1275 mm

Weight: 43 kg

fits for 21 pieces of Accu S1L x 3 Boards as
4C, 18C, 22C ICE type



EPS Pallet Shipper 1200L Standard

Order No.: B 1006 15 uk

Dimensions:

Outer: 1400 x 1000 x 1600 mm

Inner (payload): 1200 x 800 x 1275 mm

Weight: 33 kg

fits for 21 pieces of Accu S1L x 3 Boards as
4C, 18C, 22C ICE type



EPS VIP Pallet Shipper 1200L Accu Lid

Order No.: B 1005 14 uk

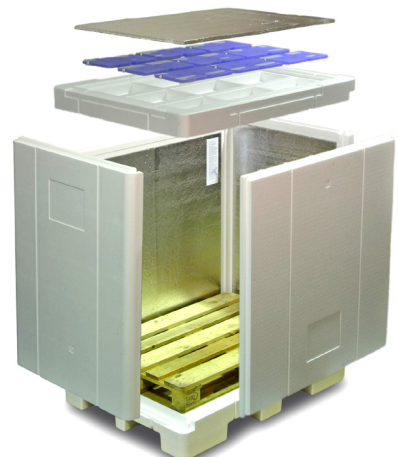
Dimensions:

Outer: 1400 x 1000 x 1600 mm

Inner (payload): 1200 x 800 x 1275 mm

Weight: 43 kg

fits for 18 pieces of Accu S1L x 3 Boards and
9 pieces ICE Accu S1L and 9 pieces 4C Accu S1L



EPS Pallet Shipper 1200L Accu Lid

Order No.: B 1006 14 uk

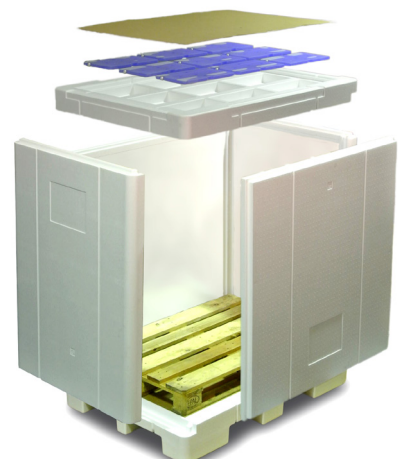
Dimensions:

Outer: 1400 x 1000 x 1600 mm

Inner (payload): 1200 x 800 x 1275 mm

Weight: 31 kg

fits for 18 pieces of Accu S1L x 3 Boards and
9 pieces ICE Accu S1L and 9 pieces 4C Accu S1L

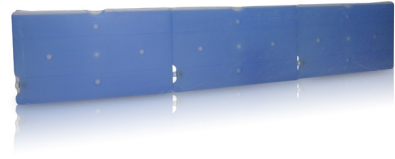


4C Accu S1L x3 Board

Order No.: A 0900 32 uk

Dimensions: 1082 x 212 x 18 mm

Weight: 3.0 kg



ICE Accu S1L x 3 Board

Order No.: A 0810 05 uk

Dimensions: 1082 x 212 x 18 mm

Weight: 3.5 kg



22C Accu S1L x 3Board

Order No.: A 0900 33 uk

Dimensions: 1082 x 212 x 18 mm

Weight: 3.0 kg



18C Accu S1L x3 Board

Order No.: A 0900 34 uk

Dimensions: 1082 x 212 x 18 mm

Weight: 3.0 kg



-21C Accu S1L x3 Board

Order No.: A 0900 35 uk

Dimensions: 1082 x 212 x 18 mm

Weight: 4.5 kg



30C Accu S1L x3 Board

Order No.: A 0900 36 uk

Dimensions: 1082 x 212 x 18 mm

Weight: 4.5 kg



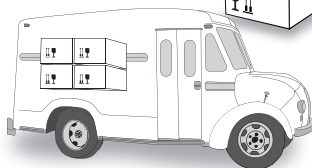
1. Starting

Use Microsoft Excel™ and deltaT's ThermoScan software in order to:

- set start time or start delay
- set intervals
- set alarm levels



Placing the ThermoScan

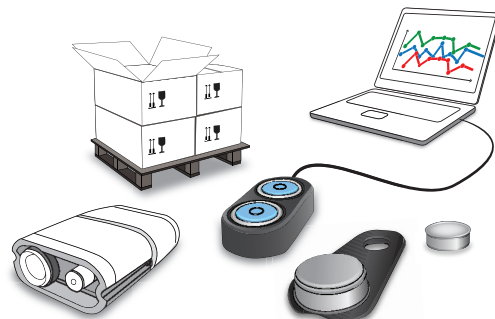


2. Storage and Transport

The ThermoScan will measure the temperature surrounding or within your goods, for as long as required.

3. Getting the Data

- Read your measurements
- Create Excel™ charts
- Add them to your data base



ThermoScan DataLogger

Order No.: D 1000 01 uk

Temperature data logger

Range: -40 ... 85°C

Resolution: 0.5°C

Weight: 3 g

Dimensions: Diameter 17mm. Height 6mm. Sturdy metal casing



ThermoScan DataLogger (Calibrated)

Order No.: D 1000 02 uk

Temperature data logger

Range: -40 ... +85°C

Resolution: 0.5°C

Weight: 3 g

Dimensions: Diameter 17mm. Height 6mm. Sturdy metal casing

Incl. Calibration (-30 °C ... +40 °C)



ThermoScan HR DataLogger

Order No.: D 1000 03 uk

Temperature data logger

Range: -40 ... +85°C

Resolution: 0.1°C

Weight: 3 g

Dimensions: Diameter 17mm. Height 6mm. Sturdy metal casing



ThermoScan HR DataLogger (Calibrated)

Order No.: D 1000 04 uk

Temperature data logger

Range: -40 ... +85°C

Resolution: 0.1°C

Weight: 3 g

Dimensions: Diameter 17mm. Height 6mm. Sturdy metal casing

Incl. Calibration (-30°C ... +40°C)



ThermoScan USB Adaptor

Order No.: D 1000 06 uk

USB port for connecting the BlueDot reading unit to the PC

Weight: 9.5 g



ThermoScan BlueDot Read Unit

Order No.: D 1000 07 uk

ThermoScan data logger reader for connection with USB adaptor

Nr. D 1000 05 uk or Nr. D 1000 06 uk

Weight: 54 g



ThermoScan Software

Order No.: D 1000 08 uk

Software for programming and evaluating the ThermoScan software in Microsoft™ Excel™

License for 5 ThermoScan data loggers or ThermoScan HR data loggers

Weight: 15.5 g



ThermoScan Software update

Order No.: D 1000 20 uk

Software for programming and evaluating the ThermoScan software in Microsoft™ Excel™

License for 5 ThermoScan data loggers or ThermoScan HR data loggers

Weight: 15.5 g



ThermoScan Starter Kit (USB)

Order No.: D 1000 10 uk

Accessory kit for ThermoScan data loggers

- USB port adaptor
- BlueDot reading unit
- ThermoScan software

License for 5 ThermoScan data loggers or

ThermoScan HR data loggers

Software for programming and evaluating ThermoScan

Data loggers in Microsoft™ Excel™

Weight: 0.32 kg



TempRec

Order No.: D 1000 11 uk

Dimensions: 65 x 31 x 106 mm

Material: Polycarbonate. Waterproof gem. IP 68

Weight: 0.12 kg

To read ThermoScan data loggers

Stores data from up to 370 ThermoScan data loggers

Display of alarms via LEDs and an LCD display

Not suitable for starting or resetting ThermoScan data loggers

Imports data into the DeltaT ThermoScan scanning application



ThermoScan company software

Order No.: D 1000 12 uk

For all ThermoScan data loggers or ThermoScan HR data loggers including site license for one company

Software for programming and evaluation of ThermoScan data loggers in Microsoft™ Excel™





Gesellschaft für Medizintechnik mbH

delta T GmbH | Industriestrasse 13 | 35463 Fernwald | Germany
Fon: +49 (0)641-3305554-0 | Fax: +49 (0)641-3305554-9
www.deltaT.info | www.pharma-logistic.com | Email: sales@deltat.de
© 2019 deltaT