



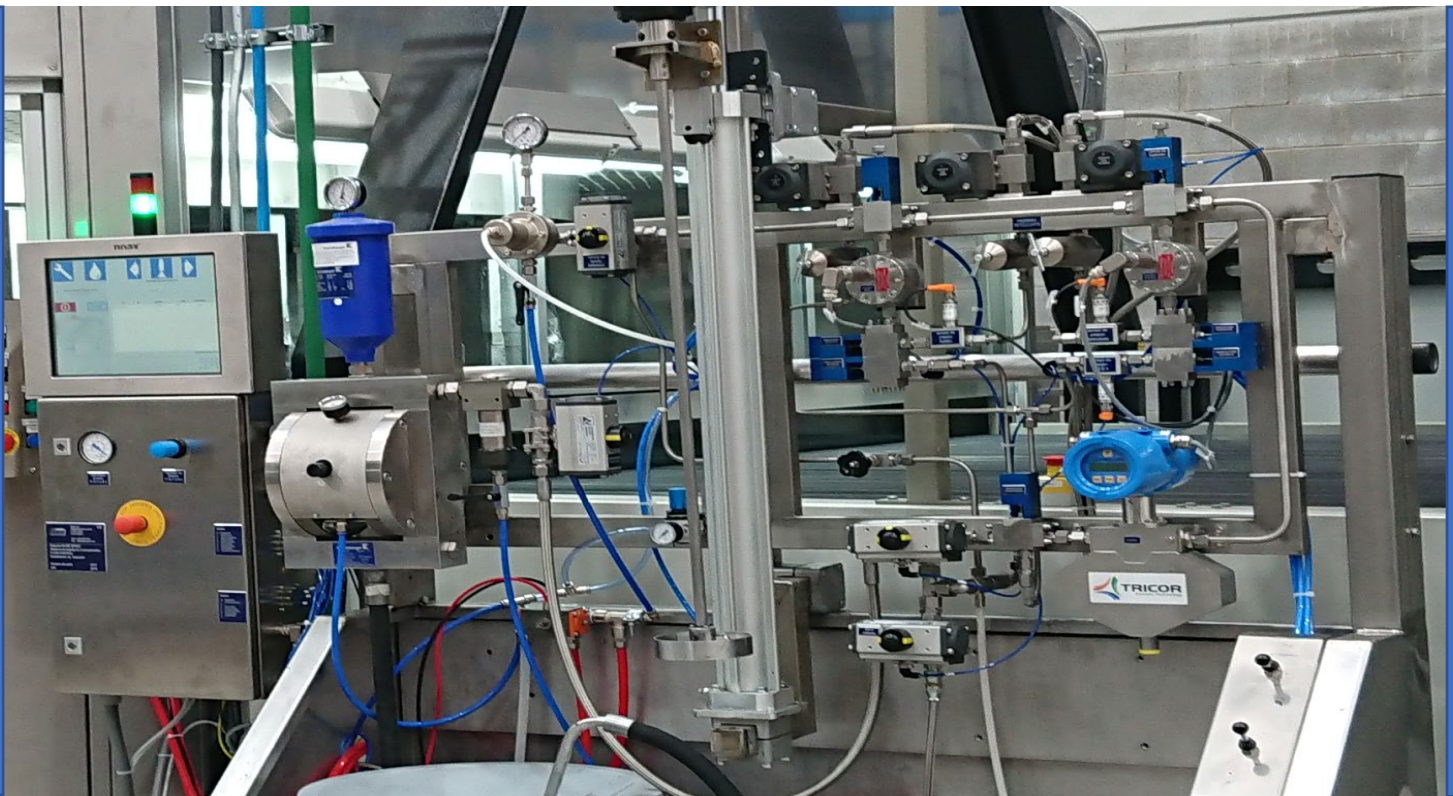
MIXING – DOSING - BATCHING

EASY – MIX - SYSTEME



nearly each kind of application are possible
broad spectrum of materials, including solvent borne, waterborne epoxies,
and acid catalyzed materials

- use know how -



EASY_MIX based of SIMATIC Technology

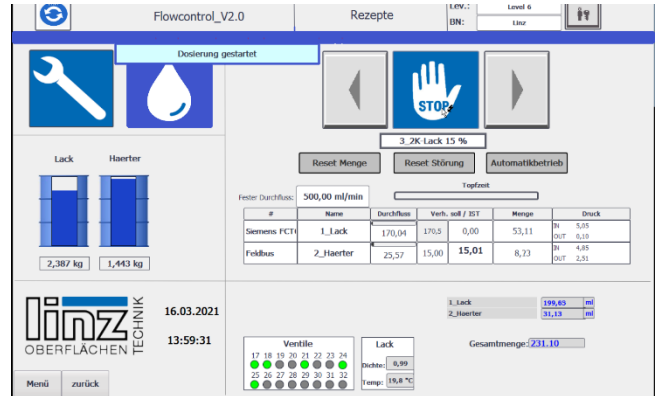
Linz-Technology



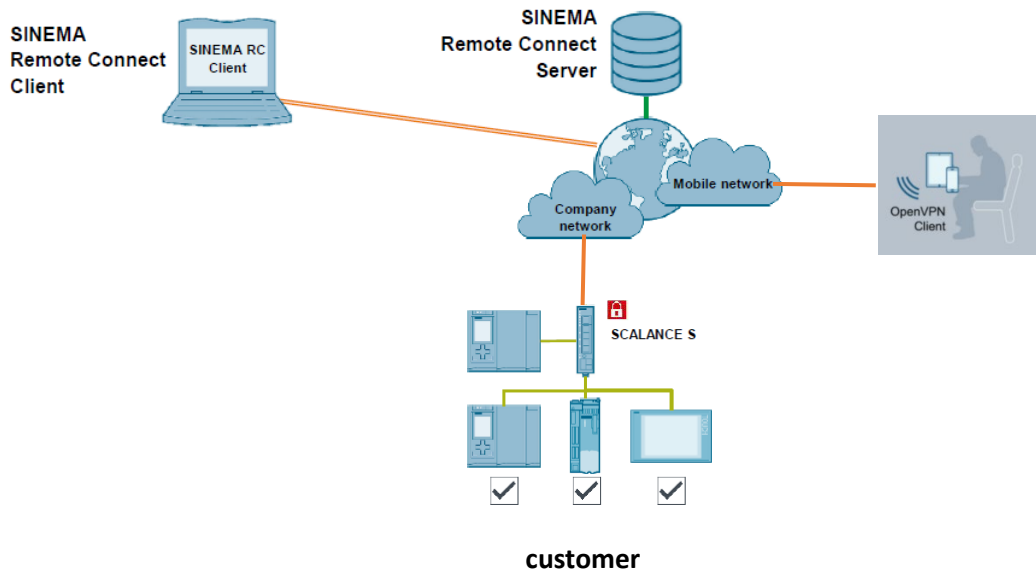
Rainer Linz Oberflächentechnik GmbH
Linzr Strasse 1
A-3003 Gablitz (bei Wien)
Phone +43 2231 65191-0
Fax +43 2231 65193-14
Mobil +43 664 3004704
office@linz-gmbh.com
www.linz-gmbh.com

Vertriebsbüro Deutschland
Hauptstrasse 47/2
D-74229 Oedheim
Phone +49 151 27183516
sales.de@linz-gmbh.com

Easy Mix system based of SIMATIC TECHNOLOGY operating by Touch or using PN/PN coupler and operate from your PLC



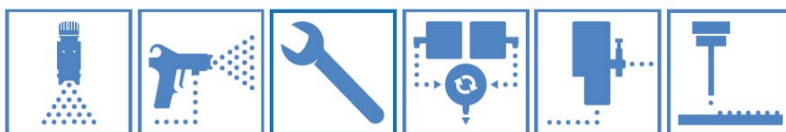
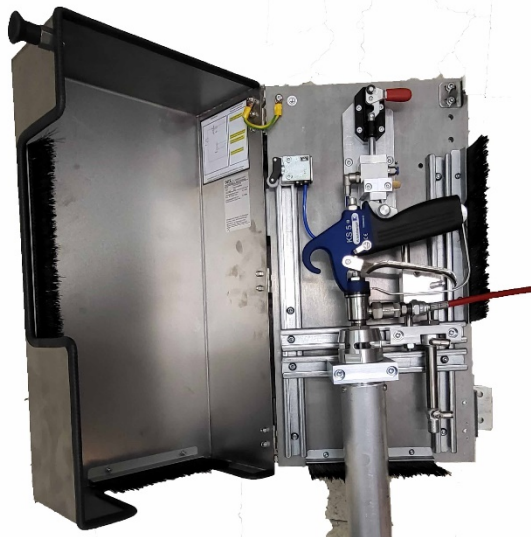
support from beginning SERVICE – UPDATE BY VPN REMOTE CONTROL



**EASY MIX P15 3 component system
Airless / Airmix**



Gun cleaner – easy clean



TECHNICAL EQUIPMENT, OPTIONS

- **Software:** FlowControl useable for each application configuration
 - **operating:** 1 – 4 components
 - **pressure:** 1-250 bar
 - **flow measurement:** Coriolis flowmeter / Gear flowmeter / inductive flowmeter
 - **supply system:** piston pump, diaphragm pump, eccentric pump, piston dispenser
 - **mixing system:** injection system, device control
 - **ratio:** 0,1:1 - 1 : 1
 - **accuracy:** depending from equipment and material 0,5 % - xxxx
- the use of valves and assemblies will be adapted to customer requirements

MEASURING DEVICES flow rate adaptable to your application (0,01 – xxx kg/min.)

- Coriolis flowmeter
 - Inductive flowmeter
-
- Gear flowmeter

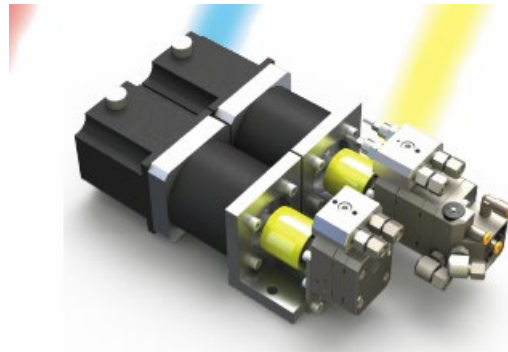


dispense devices

gear pumps:

different types and flowrates, adapted to your application

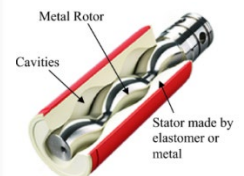
- ADLC coated (easy cleaning)
- TITAN coated (abrasive products)
- stainless steel
- different types of gears
- servo drive management



eccentric pumps:

different types and flowrates, adapted to your application

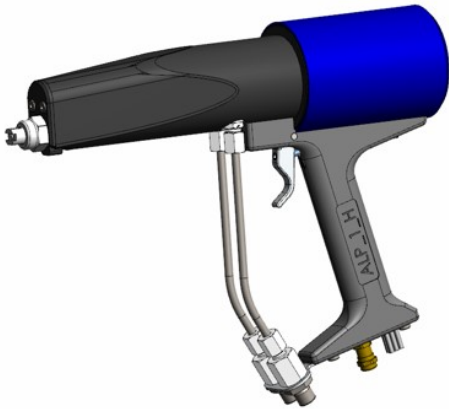
- stainless steel
- different stators



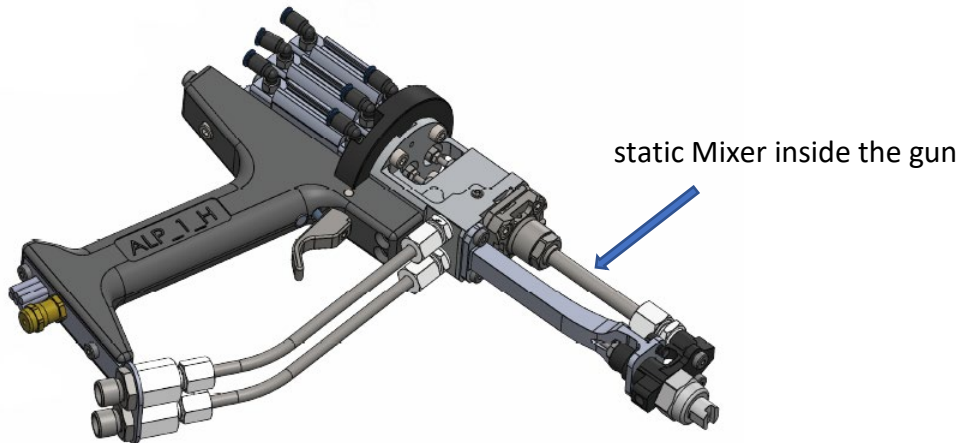
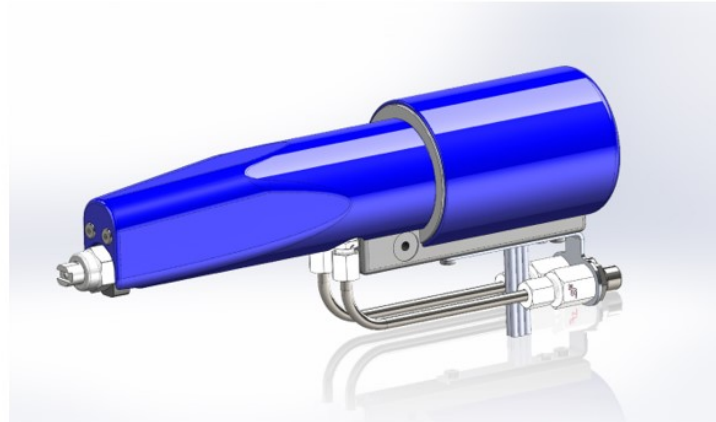
2 component Airless intern mix system ALP

(for products with short pot life time)

airless hand gun



airless automatic gun



- ALP gun system in combination with our FlowControl system
- max. high pressure 150 bar
- standard airless nozzle tips
- gun triggering by capacitive sensor
- A + B component can be activate in single mode



supply pumps esay mix

diaphragm pumps:

different types and flowrates, adapted to your application



- pneumatic pump, stainless steel
- sizes: G 3/8" - G 1/2" - G 1"

piston pumps:

different types and flowrates, adapted to your application



- classic piston pump systems
- bellows pumps for isocyanate

different

pressure tanks:

different sizes and quality, with stirrer and level control



spray application 2 component water-based glue

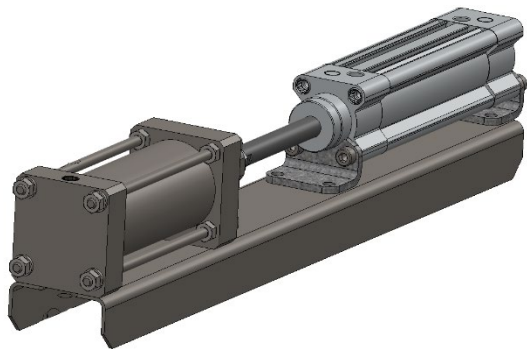
automatic spray



manual spray



piston dosing



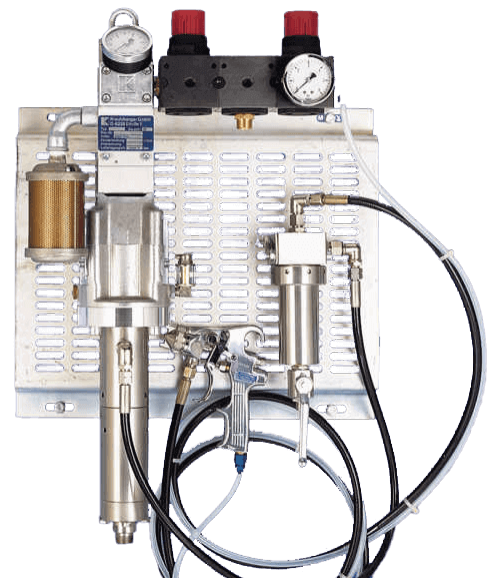
spray application Airless electrostatic 2 component



automatic gun flush station after pot life



air assistant spray system



spray application automatic HVLP - 3 component

EASY MIX (recipe scanning)



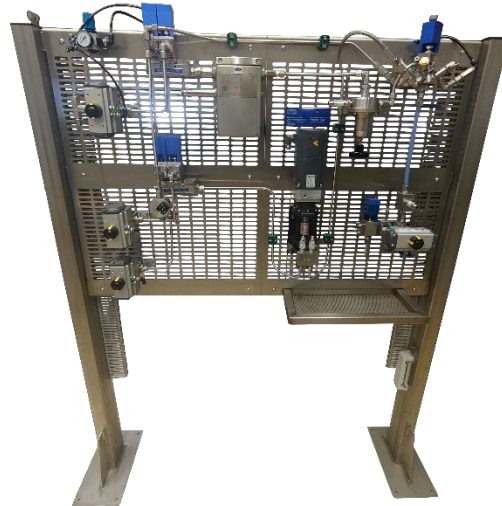
dosing by gear pumps, measuring by coriolis system



**supply center diaphragm pumps
agitator, level control**



spray application automatic HVLP – 2 component
plastic parts



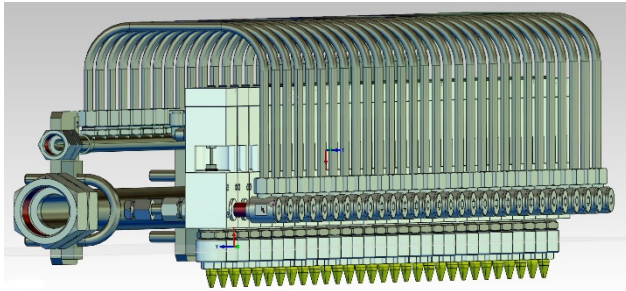
water based 2 component system



metering and dispensing, single-component or multi-component materials

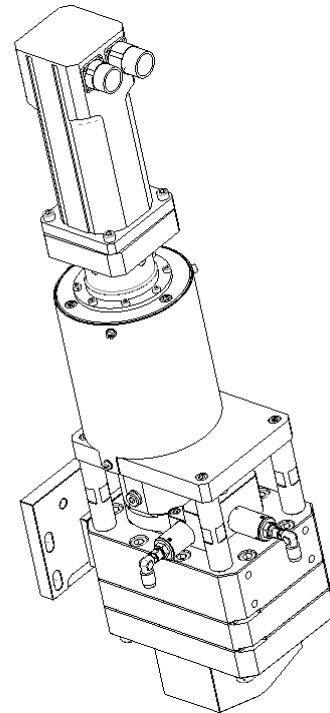
1 component glue dosing by gear pump

glue dosing line, controlled by Siemens S7



glue line

dosing pump 50 cc

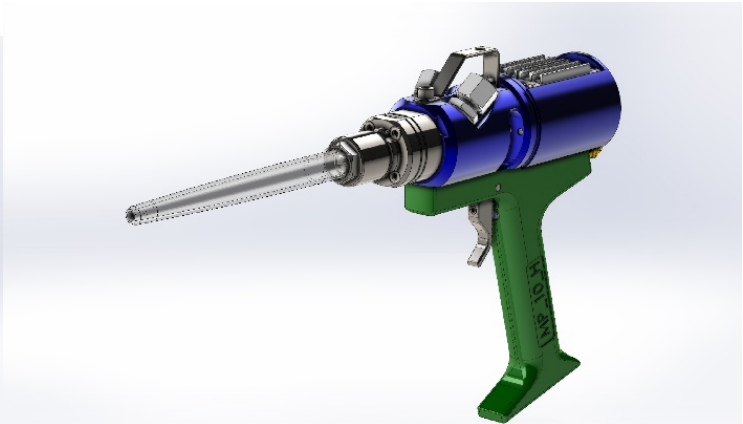


application 2 component PU glue

2 component PU glue gun MP_10H



2 component PU glu automatic gun MP_10A



dosing station for low viscosity material

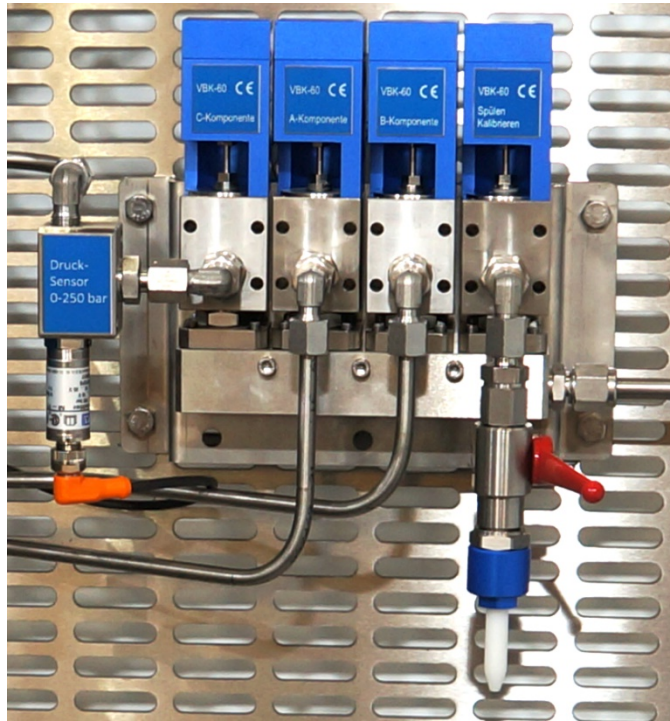


2 component glue dosing - roll coater application

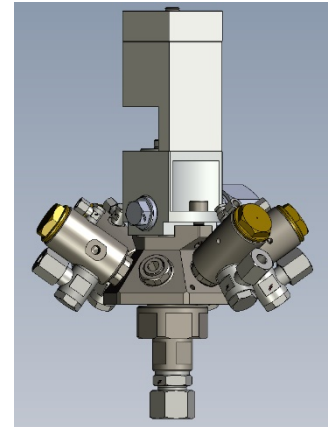
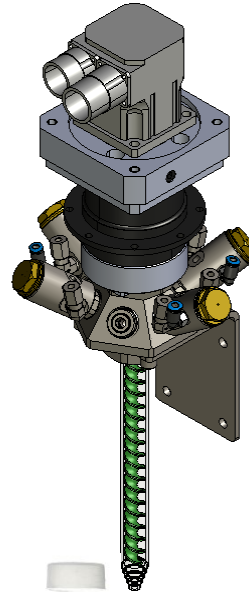


Equipment for mixing and dosing applications

change over valves high pressure Serie RIB
different combination possible

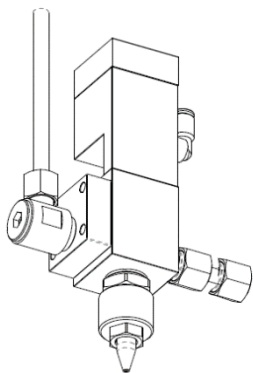


Multi-mixing head MB-70



multi mixing head MP-07
7 Color Ports

injection / dosing valves
with different nozzle equipment



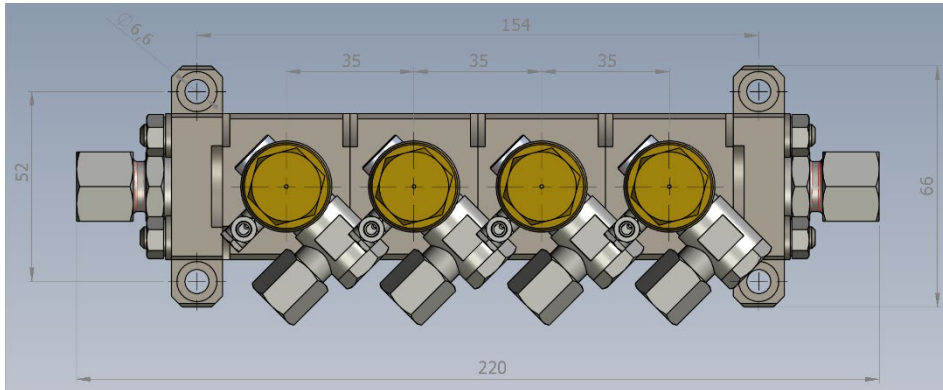
different nozzle sizes
and design



different static mixer



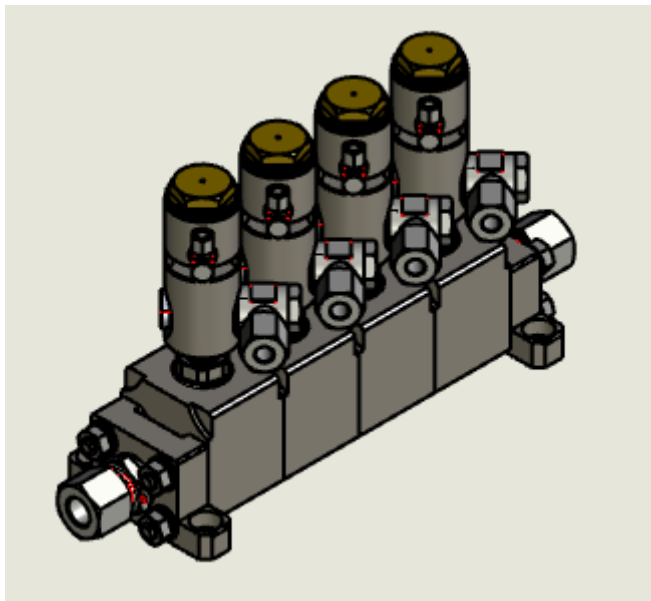
**mixing bloc VBK-10
(different combination possible)
single channel bloc system**



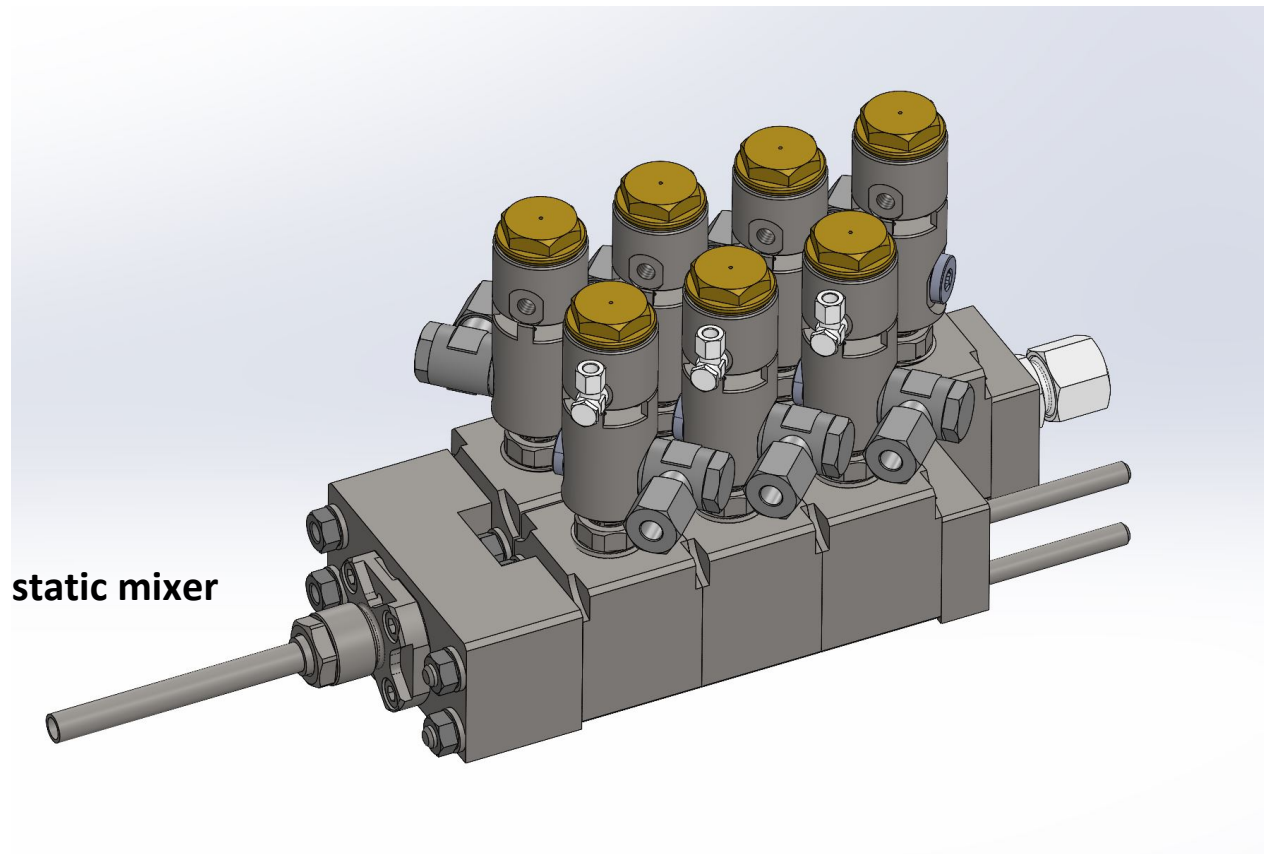
→ static mixer

2 C mixing block (paint supply port selectable)

- compact design and great performance
- excellent rinsing properties
- with not-return valve on the components
- selectable with solvent connection for A + B components
- material pressure max. 5 bar (depending on the valve)
- valve seats and valve needles in stainless steel or hard metal
- different valve seat diameter



paint mixing bloc VBK-08
2 channel bloc version
VBK-08



static mixer

2 C mixing bloc (number of valves selectable)

- compact design and great performance
- excellent rinsing properties
- with not-return valve on the components
- selectable with solvent connection for A + B components
- material pressure max. 5 bar (depending on the valve)
- valve seats and valve needles in stainless steel or hard metal
- different valve seat diameter



NOTES:

.....

.....

.....

.....

.....

.....

.....

.....

.....

.....

.....

.....

.....

.....

.....

.....

.....

.....

.....

.....

.....

