



bdp

*Mechanical Components*

## bdp Mechanical Components

Experience in supplying mechanical components for  
every industrial sector since 1982

[www.bdp-mc.com](http://www.bdp-mc.com)

# About us

- bdp Mechanical Components has been supplying industrial mechanical components internationally since 1982.
- We help our customers to develop and procure high-quality casting and forging parts at fair market prices, by always finding the right production partner for every customer's needs.
- With 14 locations and 150 employees in Bulgaria, China, Germany, Poland, Spain and Switzerland, bdp is optimally positioned internationally and always on site.
- bdp MC customers are mostly located in Germany and Spain. Our procurement locations are in China and Eastern Europe.
- Our technical focus is in the development and production of metal components.
- We are ISO 9001: 2015 certified, many of our production partners also IATF 16949.



# What we can do for you

## Our strengths



- With competencies in purchasing, sales, construction, quality control
- Located in Europe and Asia
- Motivated and committed to find the best solutions for your company
- Close cooperation between our

engineers and auditors with production partners, from development through production to quality assurance

- Pool with ca. 100 Producers for casting, forging, machining, welding, bending, punching.
- High quality production and inspection systems
- Certified according to international standards
- Many years of collaboration have placed great reliability
- Experienced in small and large series.



- With our international presence, we can communicate in your national language
- Interim storage facilities in Germany enable flexible transport options

Depending on customer requirements, production partners in Eastern Europe or China are selected from our producer pool.

# Summary of our producer pool

Allocation of our production partners	Application examples	Material	Certificate	Examples for process / equipment	Weight range of products (kg)	Tolerance class
<b>Sand casting</b> (65 in China 34 in Eastern Europe)	Automotive Train Machines Valves, pumps	Cast iron (Grey iron spheroidal iron)	IATF 16949 ISO9001 AD2000 CE/PED ...	Manual Automatic Vertical Horizontal	0,5 to 20.000	Raw (R): CT8 Finished (F): ISO2768-mk
<b>Precision casting</b> (15 in China 3 in Eastern Europe)	Automotive Food industry Machines Valves, pumps	Spheroidal iron Steel Stainless steel Steel alloy Copper	IATF 16949 ISO9001 AD2000 CE/PED API 6D ...	Automatic mould  Resin Water glass	0,05 to 400	R: CT4-CT8 F: ISO2768-mk
<b>Die casting</b> (13 in China 4 in Eastern Europe)	Automotive Machines Valves, pumps	Aluminium Alu alloy	IATF 16949 ISO9001	Equipment with 60 to 3000t	0,01 to 30	R: CT6-CT9 F: ISO2768-mk
<b>Forging</b> (7 in China 3 in Eastern Europe)	Automotive Machines Valves, pumps	Steel Stainless steel	IATF 16949 ISO9001 AD2000 CE/PED...	Press with 5 to over 1000t	0,5 to 120	R: EN10243-1 F F: ISO2768-mk
<b>Stamping</b> (3 in China 5 in Eastern Europe)	Automotive Machines	Alu alloy Steel Stainless steel	IATF 16949 ISO9001	Equipment with 60 to 1000t	0,02 to 30	R: +/-0,1 F: ISO2768-mk

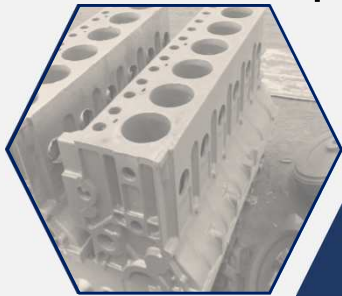


# What we can do for you

## Our core competencies

bdp

Mechanical Components



Main focus in the industry: mechanical engineering, energy industry, pump and valve manufacturing (liquids and gaseous substances), automotive industry, etc.



Specialized in the delivery of mechanical components according to customer design, pattern design, from small to medium series

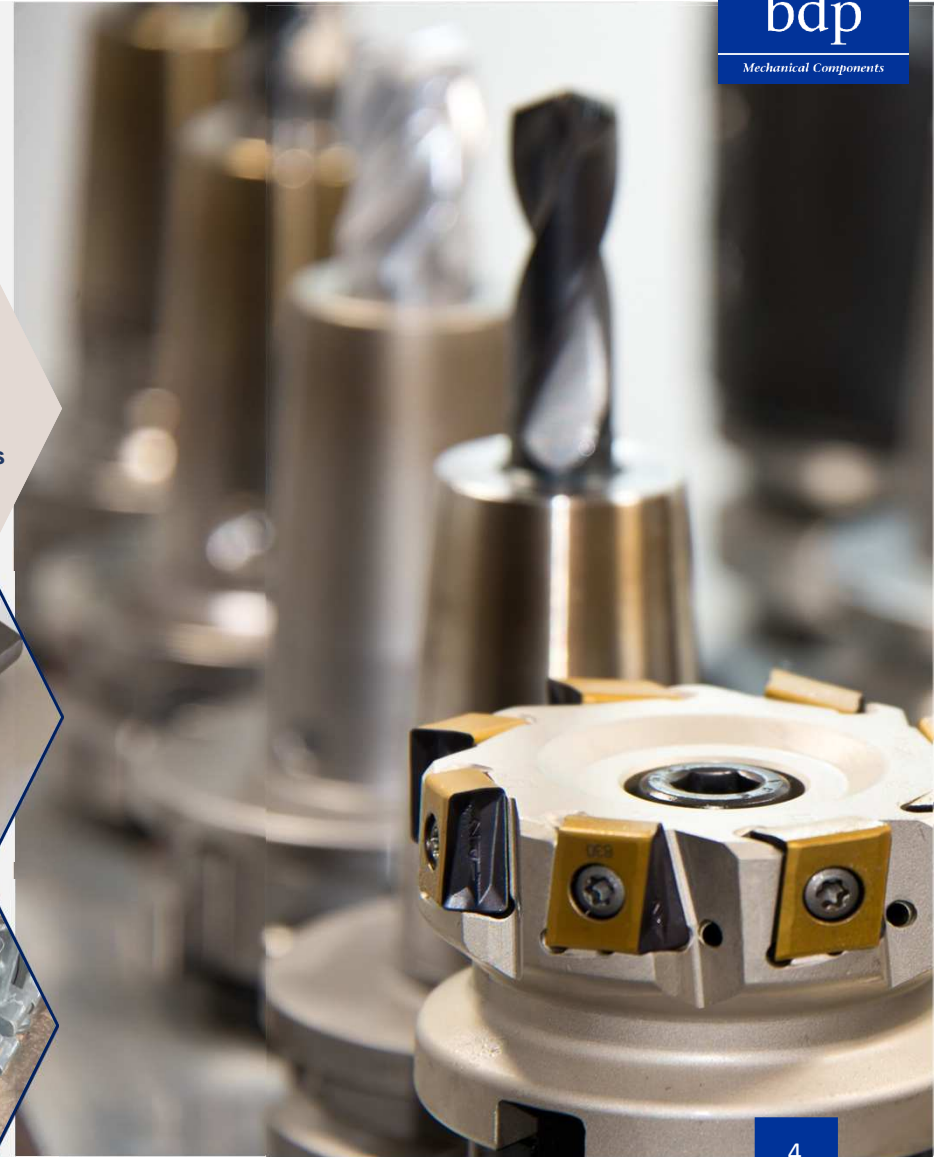
Main focus in the use of materials: cast and forged parts with lamellar and spheroidal graphite, steels (including stainless steel), cast aluminum etc..

We are able to supply complete components, e.g. also with coating and assembly



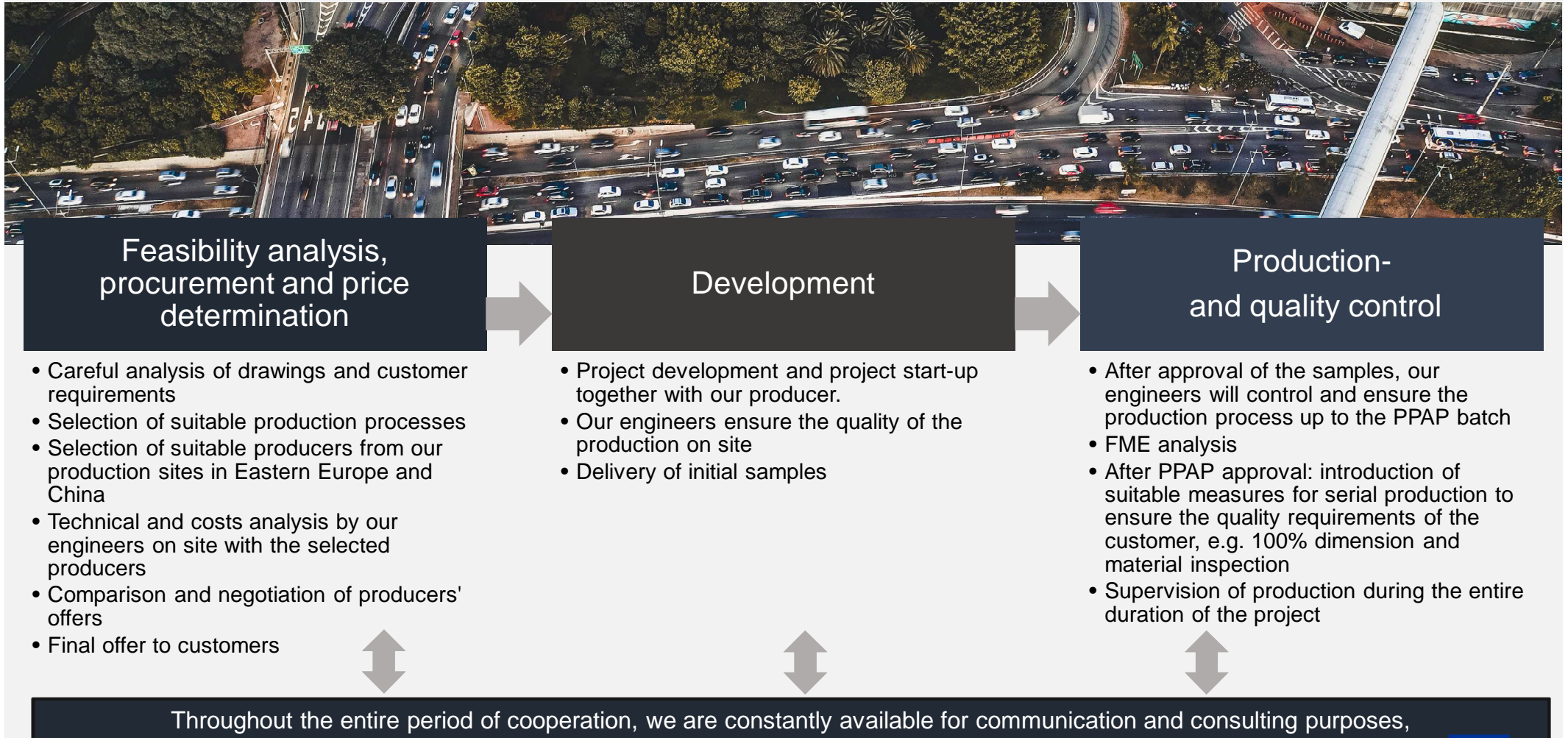
Main focus of manufacturing technology: Casting: sand casting, precision casting, high pressure & low pressure casting; forging, machining, welding, punching, bending

Consulting services in various areas such as management, technical advice, import-export, international procurement



# What we can do for you

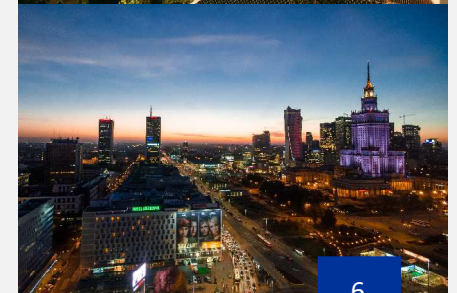
## Our process





# About us

## Our locations



# About us

## Our Team



**Dr. Michael Bormann**

GM bdp Bulgaria  
CEO of bdp group



**Fang Fang**

Partner bdp China  
COO bdp MC



**Peter Capitain**

GM  
bdp Spain



**Jesús Méndez**

Sales manager  
bdp Spain



**Paloma Alcaide**

Admin & Logistics  
bdp Spain



**Carmen Navarro**

Admin & Logistics  
bdp Spain



**Piotr Banaszek**

Purchasing  
bdp Polem



**Dimitar Serev**

Law & Admin  
bdp Bulgaria



**Lisa Xu**

Project & SQM  
bdp Shanghai



**Sindy Pei**

BD & PM  
bdp Shanghai



**Chuanying Cui**

Technical Manager  
bdp Shanghai



**Eric Tang**

Sourcing Manager  
bdp Shanghai



**Tyler Fan**

Sourcing Manager  
bdp Shanghai



**Jane Chu**

Accountant  
bdp Shanghai



**Xiuguo Dong**

Technical Sales  
bdp Germany

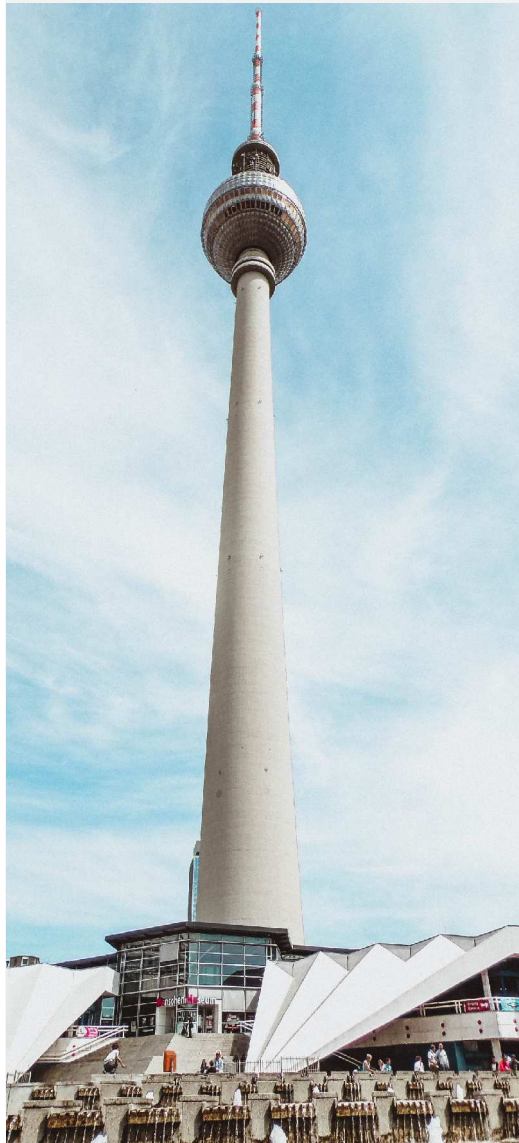


**Sebastian Thiele**

Head of Sales  
bdp Germany



# Together we form the bdp group



bdp

*Bormann · Demant & Partner*

- Company founding
- Financial and payroll accounting
- Tax consulting
- Legal consulting
- Due diligence

bdp

*Revision und Treuhand*

- Annual and consolidated financial statements audit
- Internal Control System (ICS)
- Internal and external revision
- Special audit
- Due diligence

bdp

*Management Consultants*

- Management consulting
- Process optimization
- Restructuring
- Financing
- M&A Germany / China

bdpChina

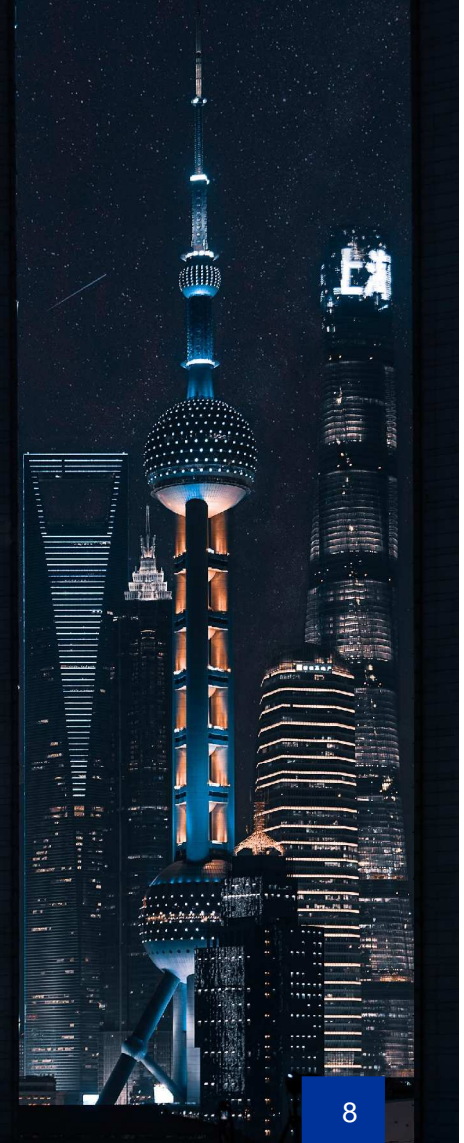
*Management Consulting*

- Company founding
- Annual and consolidated financial statements audit
- Financial and payroll accounting
- Tax consulting
- Legal consulting

bdp

*Mechanical Components*

- Sourcing, consulting and support
- Sourcing, analysis and selection of suitable production partners
- Supplier audit
- Outsourcing of purchasing
- Inspection and quality control
- Pattern production and R&D



## Product examples (1/8)



Product name: locking sleeve

Application: automotive

Production process: sand casting

Material: EN-GJMB-550-4 EN1562

Dimension (LxBxH, in mm): ca. 88x65x56

Weight (kg): 0,3

Annual volume: 450.000 – 900.000 pcs



Product name: guiding block

Application: automotive

Production process: machining

Material: Steel

Dimension (ØxH, in mm): ca. 26x24

Weight (kg): 0,16

Annual volume: 500.000 pcs

## Product examples (2/8)



Product name: labyrinth ring  
Application: automotive  
Production process: sand casting + machining  
Material: EN GJS 400  
Dimension ( $\varnothing \times H$ , in mm): ca. 234x56  
Weight (kg): 3,8  
Annual volume: 40.000 – 70.000 pcs



Product name: sleeve  
Application: automotive and train  
Production process: cold drawing + machining  
Material: Steel  
Annual volume: 20.000 – 150.000 pcs



## Product examples (3/8)



Product name: Knife valve  
Application: fluid transport  
Production process: sand casting + machining  
Material: EN GJS 400  
Dimension (mm): DN 5 – DN 800  
Weight (kg): 5 – 220  
Annual volume: 500 – 3.000 pcs



Product name: gas valve housing  
Application: gas & fluid transport, safety part, DCTG class 3 (for some dimensions even more strict)  
Production process: die casting + machining  
Material: EN AC 47100  
Dimension (LxBxH, in mm): ca. 140x96x102  
Weight (kg): 0,9  
Annual volume: 25.000 pcs

## Product examples (4/8)



Product name: Gas valve lower bottom part  
Application: gas transport, safety part with high requirements on tolerance and precision  
Production process: die casting + machining  
Material: AlSi9Cu3  
Dimension (LxBxH, in mm): 70x40x8  
Weight (kg): 0,03  
Annual volume: 300.000 pcs

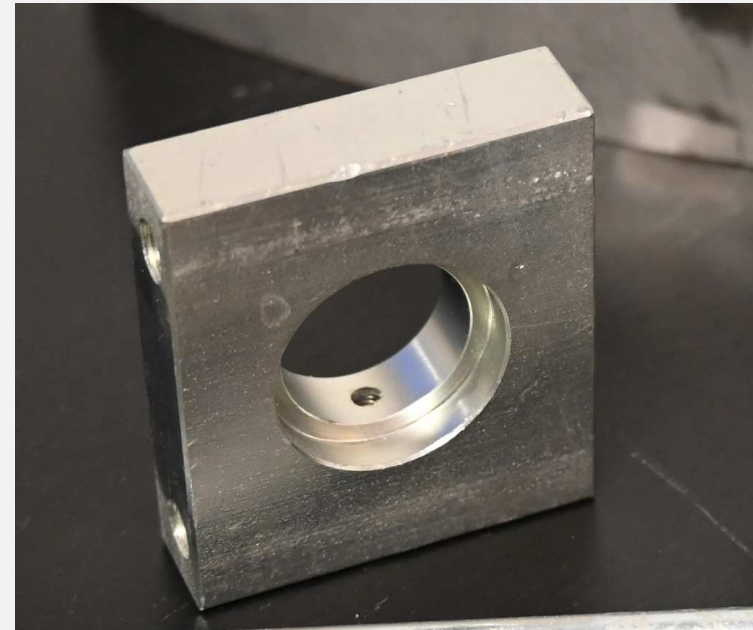


Product name: Cover  
Application: gas transport, safety part with high requirements on tolerance and precision  
Production process: die casting + machining  
Material: EN AC 47100  
Dimension (mm): DN 40, DN 50  
Weight (kg): 0,4 – 0,7  
Annual volume: 14.000 St

## Product examples (5/8)



Product name: hand wheel  
Application: fluid transport  
Production process: sand casting + machining  
Material: EN GJL 250  
Dimension (mm): DN 50 – DN100  
Weight (kg): 2 – 20  
Annual volume: 3.000 pcs



Product name: valve bridge  
Application: fluid transport  
Production process: cold drawing + machining + Zinc plating  
Material: Q235 Steel  
Dimension ( $\varnothing \times H$ , in mm): ca. 234x56  
Weight (kg): 3,8  
Annual volume: 2.000 pcs



## Product examples (6/8)



Product name: valve cover

Application: fluid transport

Production process: die casting + machining

Material: aluminium

Dimension (LxBxH, in mm): ca. 140x140x70  
180x180x90  
210x210x100

Weight (kg): 2,5

Annual volume: 5.000 St



Product name: nut

Application: fluid transport

Production process: cold forging + machining

Material: CuZn39Pb1Al-B

Dimension (mm): DN 50 to DN 600

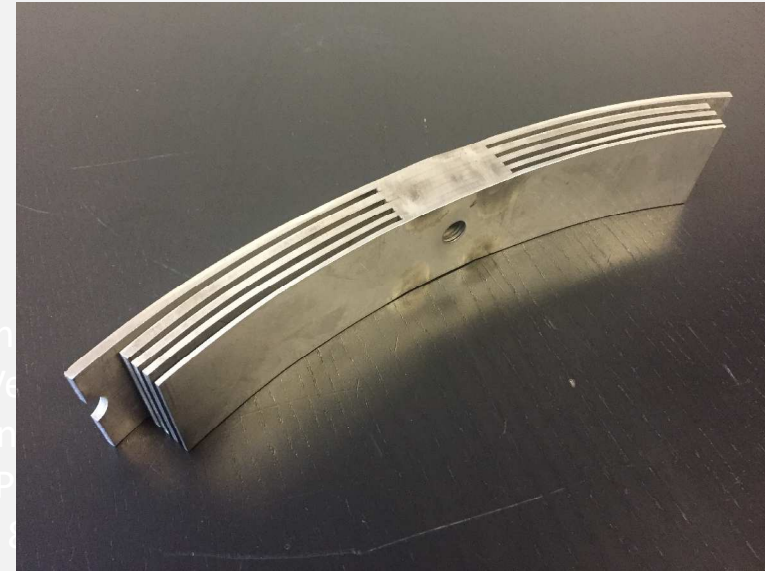
Weight (kg): 0,23 – 18

Annual volume: 1.000 St

## Product examples (7/8)



Product name: rubber sealing  
Application: valve  
Production process: plasticating  
Material: NBR / EPDM / VITON  
Dimension (mm): DN 80 to DN 300  
Weight (kg): 0,24 – 1,48  
Annual volume: 2.000 pcs



Product name: insulation kit  
Application: train  
Production process: cold forming + machining + welding  
Material: stainless steel  
Dimension (LxBxH, in mm): ca. 250x50x15  
Weight (kg): 0,5  
Annual volume: 800 pcs

## Product examples (8/8)



Product name: double-threaded Screw  
Application: fastening  
Production process: machining  
Material: steel  
Dimension (L, in mm): 50 – 600  
Weight (kg): 0,1 – 2  
Annual volume: 1.000 pcs



Product name: Rotating Part  
Application: electrical conduction  
Production process: sand casting  
Material: CuSn10-GS  
Dimension (LxBxH, in mm): ca. 370x40x60  
180x50x100  
Weight (kg): ca. 2  
Annual volume: 800 St



## Customer reference



**STIEBEL ELTRON**



# Contact information

## Head Office



**bdp Mechanical Components  
Deutschland GmbH**  
Danziger Straße 65  
10435 Berlin  
Tel.: +49 (0) 30 4433 610  
Fax: +49 (0) 30 4433 6154  
info@bdp-mc.com  
[www.bdp-mc.com](http://www.bdp-mc.com)

## Soucing Centre Eastern Europe



**bdp Mechanical Components  
Warsaw**  
Ul. Klarysewska 50  
02-926 Warszawa  
Tel.: +48 (0) 513 0305 06  
info@bdp-mc.com  
[www.bdp-mc.com](http://www.bdp-mc.com)



**bdp Mechanical Components  
Bulgaria**  
Bratja Miladinovi Str. 16, Etage 2,  
Büro 3, 1301 Sofia, Bulgaria  
Tel.: +49 176 2446 5126  
info@bdp-mc.com  
[www.bdp-mc.com](http://www.bdp-mc.com)

## Soucing Centre China



**bdp Mechanical Components  
(Shanghai) Co., Ltd.**  
Room 759, Building 3, German  
Center, No. 88 Keyuan Rd.,  
Pudong, Shanghai, China,  
Postcode: 201203  
Tel.: +86 (0) 21 6878 0138  
Fax: +86 (0) 21 6878 2638  
info@bdp-mc.com  
[www.bdp-mc.com](http://www.bdp-mc.com)



**bdp Mechanical Components  
Qingdao**  
Room 27A, 27th Floor, Building C.  
JINDU Garden. No.37 Donghai  
West Road, Qingdao, China,  
Postcode: 266071  
Tel. +86 (0) 532 - 6675 9663  
info@bdp-mc.com  
[www.bdp-mc.com](http://www.bdp-mc.com)



**bdp Mechanical Components  
Tianjin**  
Room K, 20th Floor, Teda  
Building, No. 256 Jiefang South  
Road, Hexi District, Tianjin, China,  
Postcode: 300042  
Tel.: +86 (0) 22 5995 9243  
Fax: +86 (0) 22 5995 9243  
info@bdp-mc.com  
[www.bdp-mc.com](http://www.bdp-mc.com)

## Sales Team



**bdp Mechanical Components Hamburg**  
Haus am Hafen, Steinhöft 5-7  
20459 Hamburg  
Tel: +49 (0) 40 3099 360  
Fax: +49 (0) 40 3099 3660  
info@bdp-mc.com  
[www.bdp-mc.com](http://www.bdp-mc.com)



**bdp Mechanical Components Frankfurt**  
Frankfurter Landstraße 2-4  
61440 Oberursel  
Tel.: +49 (0) 6171 5868 805  
info@bdp-mc.com  
[www.bdp-mc.com](http://www.bdp-mc.com)



**Mechanical Components España bdp,  
S.L.**  
Urb. Marbella Hill Village, Casa 6 Sur  
29602 Marbella/Málaga, España  
Tel.: +34 (0) 952 7663 00/01  
Fax: +34 (0) 952 7663 02  
info@bdp-mc.com  
[www.bdp-mc.com](http://www.bdp-mc.com)



**bdp Mechanical Components  
Switzerland**  
Stockerstraße 41  
CH-8002 Zürich  
Tel.: +41 (0) 58 4007 070  
info@bdp-mc.com  
[www.bdp-mc.com](http://www.bdp-mc.com)

# We look forward to working with you!

bdp

Mechanical Components



## **Fang Fang**

Partner bdp China

COO bdp Mechanical Components

## **bdp Mechanical Components Deutschland GmbH**

Haus am Hafen, Steinhöft 5-7

20459 Hamburg

Tel.: +49 (0) 40 3099 360

Fax: +49 (0) 40 3099 3660

[fang.fang@bdp-team.de](mailto:fang.fang@bdp-team.de)

[www.bdp-mc.com](http://www.bdp-mc.com)

[www.bdp-team.de](http://www.bdp-team.de)

*German, Chinese and English*

