

**NEWPOWER**<sup>®</sup> Feel That Power

**DIESEL GENERATING SET**



# NEWPOWER®



Portable, Gasoline Powered Generators





## About Us

Newpower Generator, is a company providing services and product in the area of uninterruptable power supply since 1970.. Our factory located in Hatay, Turkey with 15000 outdoor and 8000 indoor area.

Having being established to provide solutions for the uninterruptable power supply, already proved its success in manufacturing quality generators,

in both domestic and abroad, and it has become one of the leading in generator manufacturing sector, mainly in Turkey, then Russia, Azerbaijan, all other CIS countires and Middle East.

Possessing ,Quality Certificates such as , CE, ISO 9001:2008, ISO18001:2004 , ISO14001:2004 TSEK , & TSE 12601 , our firm, in producing generators using diesel engines from selected reputable worldwidely known brands such Daewoo, Ricardo, Kraft, Wuxi, Cummins , therefore being able to manufacture 10-3500 kVA capacity generators..

Newpower has given special place to the Research and Development area in its development plans , making designs meeting all types of requirmenets of the customers. Newpower is providing power determination and assemble jobs at the requested locations free of charge,has granting customers 10 years warranty for spare parts.

Newpower has a large network of dealers, and service station spread out throughout the country, the main total quality principle for Newpower is customer satisfaction and happiness.



## Our Products

Newpower Diesel Generating set are designed for outstanding performance under the most challenging conditions, such as though construction sites with the wind, sand, high temperature, high humidity, etc. Also sound proofed and protected on all sides and equipped with high-quality Alternators ( Class H insulation) Newpower sound prof Diesel units are silent in noise emission level up tp 65 dB (A) at 1m.

Newpower only use high quality industrial engines from Perkins, Cummins, Deutz, Volvo, Daewoo, Kraft , Mitsubishi and Ricardo, as well as quality Alternators from Stamford, Marathon, Leroy-somer, Mecc- Alte and Kraft.

Newpower only use durable components for generators such as chassis and soundproof cover all fittings.

Newpower only use high quality branded electrical and electronic components such as switches, sockets, connectors, harness, circuit breakers,meters, sensors,relays,batteries etc.



**NEWPOWER**



## Special Products



### Lighting Tower

Lighting Tower consists of a generator set a telescopic mast, a lighting kit and a trailer. The generator set is featured by large access door for convenient maintenance and large fuel tank for long time work. The telescopic mast can reach 8.5 meters height at maximum with strong wind resistant performance and can rotate 360 degree, allowing illumination in all directions. And the trailer makes the machine easy to move. The machine is deisgned compact and easy to use. It can meet requirements of various applications.

### Stable Performance and Safety

The generator set of the lighting tower is powered by Perkins or Cummins engine and coupled with Stamford or Leroy-Somer alternator. The superior performance of the generator set ensures stable and reliable lighting. The audible warning system equipped with the lighting tower will be activated when the mast is being rised or lowered so as to make the operators and people nearby keeps in safety distance.

### Energy -efficient Metal Halide Lamps

Metal Halide lamp can provide enough brightness with little energy, which is one of the most efficient ways to convert electrical energy into light. Compared with other lamps, their light is closer to natural light. Featured by longer service life, compact structure and lower energy consumption its widely used in various industries.

### Mobile Diesel Generators

These are suitable for or as outdoor projects, military, outdoor prime power, flexible work and so on, with the power range 10-2500 kVA.





## Containerized Diesel Generator

Containerization Diesel Gensets are attractive, robust, easy to transport and deliver effective acoustic performance. These container packages are based on standard ISO 20 ft and 40 ft high cube shipping containers for ease of transport by sea or land.

### Construction

Newpower Containerization Diesel Gensets are fully welded and fitted with rock wool and a perforated zintec steel lining to achieve greater acoustic performance. The internally mounted silencers are custom designed to reduce exhaust noise . A two-pack polyurethane paint system provides a durable finish and all doors are fitted with high-security locks.

### Fuel Tanks

Some models ( dependent on engine type) can be supplied with integral fuel tank.

### Powerful Engines

Powered by Perkins, Cummins , Wuxi, Daewoo or Mitsubishi engine, providing great power, easy maintenance, convenient operation and qualified service.

### High quality Control System

Excellent control system enhance convenient, safety and reliable of operation.

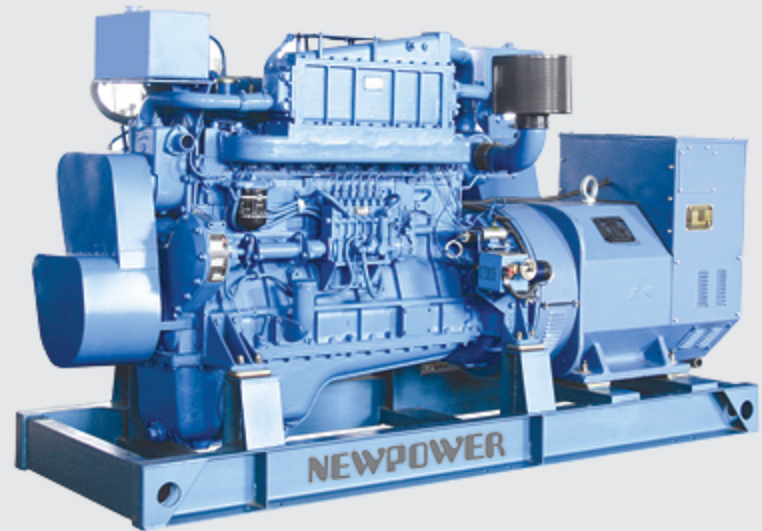


**NEWPOWER**



## Marine Generator

As leading generator manufacturer, Newpower provides dependable generator solutions for military, recreational and commercial boats and yachts.

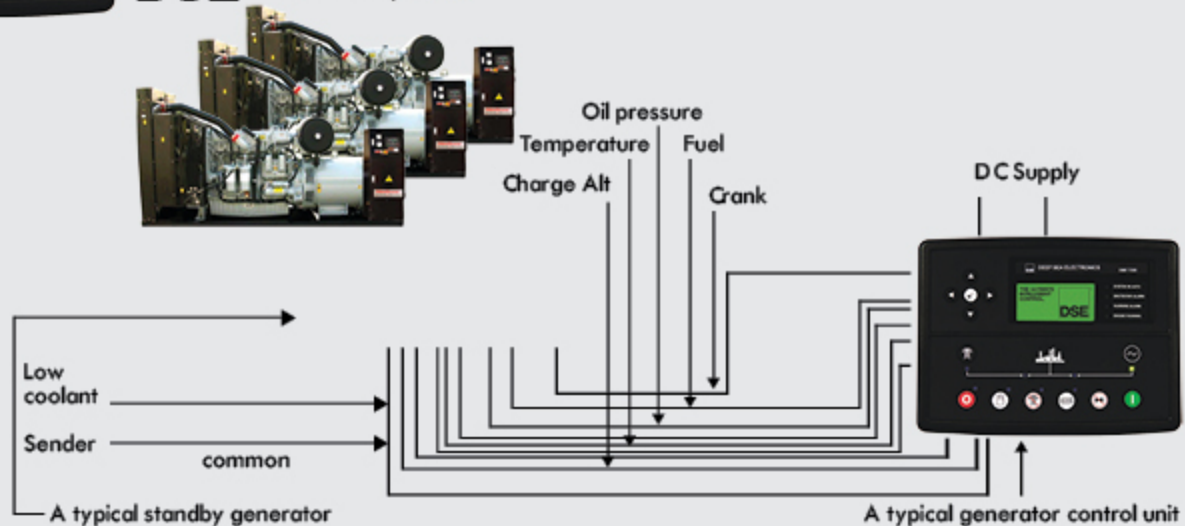


## Synchron System



- The control system, the single chip PLC modules from Deep Sea company in UK is an international mainstream brand
- Deep Sea 7220 series-latest Led version with AMF feature.
- Real time monitoring for engine and generating set operation.
- Engine and generating set running warning and self protection

**DSE** ComAp **DATAKOM**





# Perkins Diesel Power



Perkins is one of the three largest engine manufacturer in the world with more than 4,000 business outlets, provide power to 5000 different applications from more than 1000 equipment manufacturers with advanced technology. Perkins 4- 2,000 KW Diesel engines are widely used in industry, construction, agriculture, marine and power generation equipment market with its performance, quality and reliability.

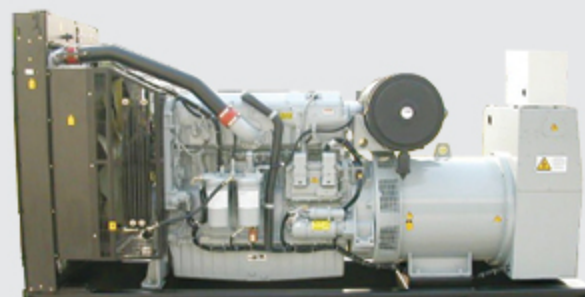


No	Genset Model	Output				Diesel Gensets Specification Date Specification			Dimensions & Weight Open		Dimensions & Weight Silent		
		Prime (kw)	Prime (kva)	Stand By (kw)	Stand By (kva)	Engine Model	Gov.	Cyl.	LXWXH	Weight (kg)	LXWXH	Weight (kg)	Noise Level (
1	NWP 9	6,3	8,1	7	9	403D11-G	M	3L	1330x500x1090	310	1950x740x1100	550	66
2	NWP 15	10	11,5	12	15	403D-15G	M	3L	1430x500x1150	375	1950x740x1100	740	66
3	NWP 22	15	19	17,5	22	404D-22G	M	4L	1550x560x1210	430	2100x740x1100	900	67
4	NWP 28	20	25	22	28	404D-22TG	E	4L	1620x600x1340	534	2100x740x1100	830	67
5	NWP 33	24	30	26	33	1103A-33G	M	3L	1870x700x1350	800	1720x820x1231	1215	68
6	NWP 50	36	45	40	50	1103A-33TG1	M	3L	1970x700x1350	890	1850x820x1221	1280	68
7	NWP 60	43	54	48	60	1103A-33TG2	M	3L	2050x700x1350	910	2400x1033x1366	1300	68
8	NWP 71	52	65	57	71	1104A-44TG1	M	4L	2200x700x1350	1050	2800x1100x1600	1500	68.5
9	NWP 88	64	80	70	88	1104A-44TG2	M	4L	2200x700x1350	1050	2700x1100x1600	1850	68.5
10	NWP 110	80	100	88	110	1104C-44TAG2	E	4L	1980X700X1200	1115	2700x1133x1617	1900	69
11	NWP 150	108	136	119	150	1006TAG	E	6L	2690x800x1470	1375	3200x1150x1700	2050	71.2
12	NWP 165	120	150	132	165	1006TAG2	E	6L	2690x800x1470	1375	3200x1150x1700	2100	71.5
13	NWP 200	144	180	158	200	1106C-E66TAG4	ECM	6L	2840x1050x1830	1830	3400x1150x1900	2300	71.8
14	NWP 220	160	200	176	220	1306C-E87TAG3	ECM	6L	2840x1050x1830	1830	3400x1150x1900	2400	72
15	NWP 250	184	230	202	253	1306C-E87TAG4	ECM	6L	2860x1050x1830	1952	3600x1300x2050	2500	72.2
16	NWP 275	200	250	220	275	1306C-E87TAG6	ECM	6L	2860x1050x1830	1980	3600x1300x2050	2500	72.5
17	NWP 385	280	350	308	385	2206A-E13TAG2	ECM	6L	3460x1168x2029	2980	4400x1400x2420	4220	73.2
18	NWP 440	320	400	352	440	2206A-E13TAG3	ECM	6L	3460x1168x2029	3000	4400x1400x2420	4260	73.5
19	NWP 500	368	460	400	500	2506A-E15TAG1	ECM	6L	3780x2003x1268	3760	4600x1400x2420	4770	74.2
20	NWP 550	400	500	440	550	2506A-E15TAG2	ECM	6L	3780x2003x1268	3760	4600x1400x2420	4770	74.8
21	NWP 660	480	600	528	660	2806A-E18TAG1A	ECM	6L	3780x1536x2180	4370	4800x1830x2500	5650	76
22	NWP 715	520	650	572	715	2806A-E18TAG2	ECM	6L	3780x1536x2180	4725	4800x1830x2500	5650	76.5
23	NWP 825	600	750	660	825	4006-23TAG2A	E	6L	4200X1710X2340	5560	5900x2350x2390	8060	85
24	NWP 880	640	800	704	880	4006-23TAG3A	E	6L	4200x1710x2340	5600	5900x2350x2390	8100	85
25	NWP 1000	720	900	800	1000	4008TAG1A	E	8L	4657x2064x2410	7300	5900x2350x2390	9800	85
26	NWP 1125	818	1022	899	1125	4008TAG2A	E	8L	4657x2064x2410	7300	5900x2350x2390	9800	85
27	NWP 1375	1000	1250	1100	1375	4012-46TWG2A	E	12V	4700x2080x2435	9000	5900x2350x2390	11500	85
28	NWP 1500	1091	1364	1200	1500	4012-46TWG3A	E	12V	4750x2080x2435	9000	5900x2350x2390	11500	85
29	NWP 1655	1204	1505	1324	1655	4012-46TAG2A	E	12V	4750x2080x2435	9100	5900x2350x2390	11600	85
30	NWP 1875	1364	1705	1500	1875	4012-46TAG3A	E	12V	4900x2080x2435	9200	5900x2350x2390	11700	85
31	NWP 2035	1480	1850	1628	2035	4016TAG1A	E	16V	6000x2870x3295	10500	12300x2350x2390	14200	85
32	NWP 2265	1646	2058	1811	2265	4016TAG2A	E	16V	6000x2870x3295	10800	12300x2350x2390	14500	85
33	NWP 2500	1800	2250	2000	2500	4016-61TRG3	E	16V	6100x2870X3295	11000	12300x2350x2390	14700	85

## Perkins Diesel Power

The series provides qualified and efficient service to customer through Newpower and Perkins worldwide service network.

60  
Hz



No	Genset Model	Output				Diesel Gensets Specification Date Specification			Dimensions & Weight Open		Dimensions & Weight Silent		
		Prime (kw)	Prime (kva)	Stand By	Stand By	Engine Model	Gov.	Cyl.	LXWXH	Weight (kg)	LXWXH	Weight (kg)	Noise Level
1	NWP 12	9	11	10	12	403D11-G	M	3L	1430x500x1150	375	1950x740x1100	550	66
2	NWP 18	13	16	14	18	403D-15G	M	3L	1430x500x1150	375	2100x740x1100	740	66
3	NWP 26	19	24	21	26	404D-22G	M	4L	1560x715x1106	560	2100x740x1100	740	67
4	NWP 35	25.5	32	28	35	404D-22TG	E	4L	1620x600x1340	560	2100x740x1100	740	67
5	NWP 39	28	35	31	39	1103A-33G	M	3L	1620x600x1340	800	2400x1100x1500	1215	68
6	NWP 58	43	53	47	58	1103A-33TG1	M	3L	2050x700x1350	910	2600x1100x1600	1550	68
7	NWP 75	55	68	60	75	1103A-33TG2	M	3L	2050x700x1350	910	2800x1150x1700	1550	68
8	NWP 84	61	76	67	84	1104A-44TG1	M	4L	2200x700x1350	1050	2800x1150x1700	1550	68.5
9	NWP 100	73	91	100	100	1104A-44TG2	M	4L	2600x850x1350	1200	2800x1150x1700	1550	68.5
10	NWP 125	90	113	100	125	1104C-44TAG2	M	4L	2600x850x1350	1200	2800x1150x1700	1550	69
11	NWP 171	108	155	120	171	1106A-70TAG1	M	6L	2850x850x1350	1400	3400x1150x1900	2100	69
12	NWP 178	120	159	132	178	1106A-70TAG2	M	6L	2850x850x1350	1400	3400x1150x1900	2100	69
13	NWP 190	144	170	158	190	1106A-70TAG3	M	6L	2850x850x1350	1400	3400x1150x1900	2100	70
14	NWP 253	185	230	202	253	1306C-E87TAG3	ECU	6L	2860x1050x1830	1980	3600x1300x2050	2500	70
15	NWP 270	196	245	216	270	1306C-E87TAG4	ECU	6L	2860x1050x1830	1980	3600x1300x2050	2500	70
16	NWP 438	320	400	350	438	2206A-E13TAG5	ECU	6L	3460x1168x2029	3000	4400x1400x2420	4220	72
17	NWP 480	350	438	385	480	2206A-E13TAG6	ECU	6L	3460x1168x2029	3000	4400x1400x2420	4220	72
18	NWP 550	400	500	440	550	2506AD-E15TAG1	ECU	6L	3780x2003x1268	3760	4400x1400x2420	4220	72.5
19	NWP 624	455	569	500	624	2506C-E15TAG3	ECU	6L	3780x2003x1268	4725	4800x1830x2500	4770	72.5
20	NWP 687	500	625	550	687	2806A-E18TAG1A	ECU	6L	3780x2003x1268	4725	4800x1830x2500	5650	74
21	NWP 750	545	681	600	750	2806A-E18TAG3	ECU	6L	3780x1536x1268	4725	4800x1830x2500	5650	74
23	NWP 825	600	750	660	825	4006-23TAG2A	E	6L	4200x1710x2340	5560	5900x2350x2390	8060	85
24	NWP 931	676	846	745	931	4008TAG	E	8L	4200x1710x2340	5600	5900x2350x2390	8100	85
25	NWP 1000	720	900	800	1000	4008TAG1A	E	8L	4657x2064x2410	9200	5900x2350x2390	11700	85
26	NWP 1097	796	995	878	1097	4008TAG2A	E	8L	4657x2064x2410	9200	5900x2350x2390	11700	85
27	NWP 1378	1002	1253	1102	1378	4012-46TWG2A	E	12V	4900x2080x2435	9200	5900x2350x2390	11700	85
28	NWP 1500	1091	1364	1200	1500	4012-46TWG3A	E	12V	4900x2080x2435	9200	5900x2350x2390	11700	85
29	NWP 1669	1208	1510	1329	1669	4012-46TAG2A	E	12V	4900x2080x2435	9200	5900x2350x2390	11700	85
30	NWP 1880	1368	1710	1500	1880	4012-46TAG3A	E	12V	4900x2080x2435	9200	5900x2350x2390	11700	85
30	NWP 2000	1368	1710	1500	2000	4016-TAG1A	E	16V	5150X2112X2560	10180	12300x2350x2390	13880	85
30	NWP 2270	1368	1710	1500	1880	4016-TAG2A	E	16V	5150X2112X2560	10180	12300x2350x2390	13880	85
30	NWP 2500	1368	1710	1500	1880	4016-61TRG3	E	16V	5150X2112X2560	10180	12300x2350x2390	13880	85

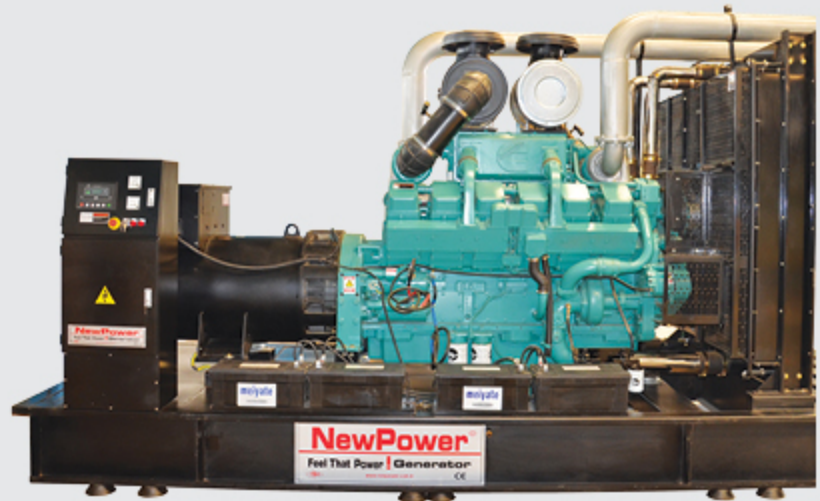


# Cummins Diesel Power



Cummins has distributors in 137 countries and regions, 5000 service Networks spread all over the world. The series provides qualified and efficient service to customer through Newpower and Cummins worldwide service network.

Genset Model	Output				Diesel Gensets Specification Data Specification			Dimensions & Weight Open		Dimensions & Weight Silent		
	Prime ( kw)	Prime (kva)	StandBy (kw)	StandBy(kva)	Engine Model	Gov.	Cyl.	LxWxH	Weight (kg)	LxWxH	Weight (kg)	Noise Level dB (A)@7m)
NWC 30	25	27	24	30	4B3.9-G2	E	4L	1650x720x1440	830	2330x1080x1550	1300	71
NWC 45	32	41	35	45	4BT3.9-G2	E	4L	1650x720x1440	830	2330x1080x1550	1300	71
NWC 55	40	50	44	55	4BTA3.9-G2	E	4L	1800x900x1450	870	2330x1080x1550	1400	72
NWC 70	50	63	56	70	4BTA3.9-G2	E	4L	1800x900x1450	870	2920x1140x1600	1400	73
NWC 110	80	100	88	110	6BT5.9-G2	E	6L	2300x850x1500	1100	2920x1140x1600	1920	74
NWC 132	96	136	120	150	6BTA5.9-G2	E	6L	2300x850x1500	1100	2920x1140x1600	2150	74
NWC 150	120	150	132	165	6BTA5.9-G2	E	6L	2450x850x1500	1200	3520x1330x1850	2150	74
NWC 200	150	180	160	200	6CTA8.3-G2	E	6L	2400x810x1500	1600	3520x1330x1850	2600	75
NWC 230	160	200	176	230	6CTAA8.3-G2	E	6L	2470x960x1500	1800	3520x1330x1850	2600	76
NWC 275	200	250	220	275	6LTAAB.9-G2	E	6L	2750x1120x1550	1900	4820x1380x2350	2700	77
NWC 300	220	275	242	300	NTA855-G1	E	6L	2910x1120x1740	2800	4820x1380x2350	3600	78
NWC 350	250	313	275	350	NTA855-G1B	E	6L	2950x1150x1570	3100	4820x1380x2350	3800	78
NWC 400	275	344	303	400	NTA855-G2A	E	6L	2950x1150x1710	3100	4820x1380x2350	3800	79
NWC 450	300	375	330	450	NTA855-G7	E	6L	3150x1150x1750	4000	5120x1830x2350	4980	82
NWC 500	360	450	396	500	KTA19-G3	E	6L	3250x1270x1950	4200	5120x1830x2350	5320	82
NWC 500	400	500	440	560	KTA19-G4	E	6L	3250x1270x1950	4350	5120x1830x2350	5350	83
NWC 600	420	525	462	600	KTAA19-G5	E	6L	3540x1280x2000	4300	5120x1830x2350	5350	83
NWC 660	480	600	528	660	KTAA19-G6	E	6L	3540x1280x2000	4400	5120x1830x2350	5450	83
NWC 720	576	655	576	720	KTAA19-G8	E	6L	3540x1280x2000	4400	5120x1830x2350	5450	83
NWC 760	500	690	600	760	KTAA19-G6A	E	6L	3700x1545x2000	4400	5120x1830x2350	5450	82
NWC 825	600	750	660	825	KTA38-G2	E	12V	4450x1600x2280	6600	6058x2438x2590	9480	84
NWC 900	640	820	720	900	KT38-G2B	E	12V	4520x1600x2280	6750	6058x2438x2590	9550	84
NWC 1000	728	910	800	1000	KTA38-G2A	E	12V	4520x1600x2280	6750	6058x2438x2590	9550	84
NWC 1100	800	1000	880	1100	KTA38-G5	E	12V	4650x1840x2380	7285	6058x2438x2590	10100	84
NWC 1250	900	1125	1000	1250	KTA38-G9	E	12V	4850x2000x2590	7400	6058x2438x2590	10800	85
NWC 1350	982	1228	1080	1350	KTAA38-G9	E	12V	4850x2000x2590	7900	6058x2438x2590	11100	85
NWC1375	1000	1250	1100	1375	KTA50-G3	E	16V	5100x2070x2590	9120	12192x2438x2590	13000	85
NWC 1513	1100	1375	1210	1513	KTA50-G8	E	16V	5300x2210x2590	9120	12192x2438x2590	13000	85
NWC 1650	1200	1500	1320	1650	KTA50-G8/GS8	E	16V	5300x2210x2590	9120	12192x2438x2590	13000	86
NWC 2063	1500	1875	1650	2063	QSK60-G3	E	16V	6000x2400x2600	9800	12192x2438x2890	13600	85
NWC 2288	1480	1850	1628	2288	QSK60-G4	E	16V	6000x2400x2600	9900	12192x2438x2890	13800	85



No	Genset Model	Output				Diesel Gensets Specification Data Specification			Dimensions & Weight Open		Dimensions & Weight Silent	
		Prime (kw)	Prime (kva)	Stand By (kw)	Stand By (kva)	Engine Model	Gov.	Cyl.	LXWXH	Weight (kg)	LXWXH	Weight (kg)
1	NWC 33	23	28	25	33	4B3.9-G1	E	4L	1700X830X1340	700	2330x1080x1550	1200
	NWC 40	28	36	32	40	4BT3.9-G1	E	4L	1700X830X1340	830	2330x1080x1550	1300
2	NWC 50	35	45	40	50	4BT3.9-G2	E	4L	1700X830X1340	830	2330x1080x1550	1300
	NWC 75	55	68	60	75	4BTA3.9-G2	E	4L	1700X830X1340	850	2330x1080x1550	1360
3	NWC 125	90	114	100	125	6BT5.9-G2	E	6L	2460X800X1470	1000	2920x1140x1600	2300
4	NWC 160	*116	145	128	160	6BTA5.9-G2	E	6L	2600X850X1500	1081	2920x1140x1600	2400
5	NWC 220	160	200	176	220	6CTA8.3-G2	E	6L	2600X850X1500	1100	2920x1140x1600	2660
6	NWC 250	180	225	200	250	6CTAA8.3-G2	E	6L	2600X850X1500	1600	3530x1340x1850	2850
7	NWC 320	232	290	256	320	6LTA8.9G2	E	6L	2600X850X1500	1850	3530x1340x1850	3000
8	NWC 350	254	318	280	350	NTA855-G1	E	6L	3350X1060X1800	2000	3530x1340x1850	3400
9	NWC 400	290	364	320	400	NTA855-G1B	E	6L	3350X1060X1800	2100	4280x1420x2150	3500
10	NWC 450	328	410	360	450	NTA855-G3	E	6L	3350X1060X1800	2200	4280x1420x2150	3500
11	NWC 500	365	455	400	500	NTA855-G7	E	6L	3700X1250X1800	2650	4280x1500x2150	3600
12	NWC 600	438	546	480	600	KTA19-G3	E	6L	3150X1150X2100	2800	4800x1800x2300	5350
13	NWC 700	510	637	560	700	KTAA19-G5	E	6L	3250X1270X2100	3500	4800x1800x2300	5740
14	NWC 750	545	682	600	750	KTAA19-G8	E	6L	3250X1270X2100	3800	4800x1800x2300	5740
15	NWC 900	656	820	720	900	KT38-G1	E	12V	4200X2000X2420	7000	5900x2350x2390	9500
16	NWC 1000	728	910	800	1000	KT38-G2	E	12V	4200X2000X2420	7100	5900x2350x2390	9600
18	NWC 1200	874	1092	960	1200	KTA38-G2A	E	12V	4200X2000X2420	7200	5900x2350x2390	8700
19	NWC 1300	946	1183	1040	1300	KTA38-G4	E	12V	4200X2000X2420	7300	5900x2350x2390	9800
20	NWC 1450	1056	1320	1160	1450	KTAA38G-9	E	12V	4200X2000X2420	7400	5900x2350x2390	9900
21	NWC 1600	1164	1455	1280	1600	KTA50-G3	E	16 V	5100X2070X2500	9120	12230x2350x2390	12800
23	NWC 2000	1456	1820	1600	2000	KTA50-G9	E	16 V	5100X2070X2500	9120	12230x2350x2390	12800



## Volvo Diesel Power



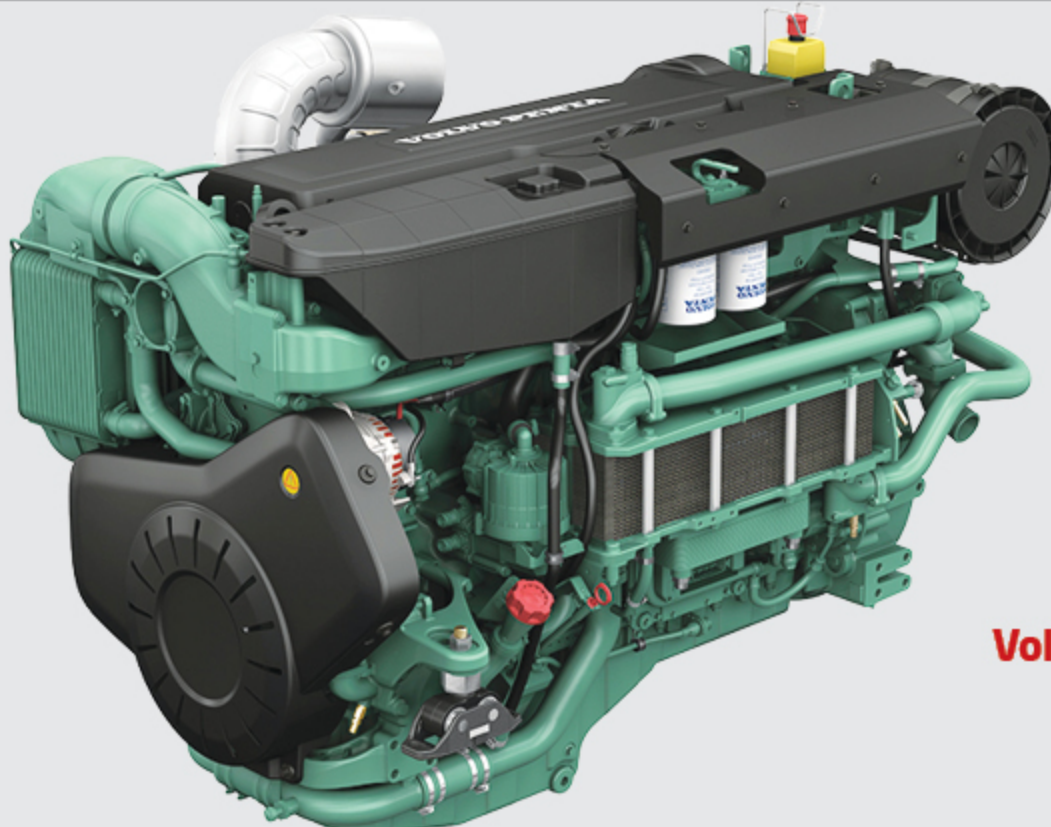
Volvo diesel engine series provides qualified and efficient service to customer through Newpower and Volvo worldwide service network.



No	Genset Model	Output				Diesel Gensets Specification			Dimensions & Weight Open		Dimensions & Weight Silent		
		Prime (kw)	Prime (kva)	Stand By (kw)	Stand By (kva)	Engine Model	Gov.	Cyl.	LXWXH	Weight (kg)	LXWXH	Weight (kg)	Noise Level ( db (A)@7m)
1	NWV 94	85	68	75	94	TAD530GE	E	4L	2081X820X1497	1225	2620X1033X1517	1725	70
2	NWV 110	100	80	88	110	TAD531GE	E	4L	2035X820X1497	1260	2620X1033X1517	1760	70
3	NWV 145	130	105	115	145	TAD532GE	E	4L	2202X900X1492	1420	2820X1133X1617	2020	70
4	NWV 170	120	150	132	170	TAD731GE	E	6L	2466X900X1542	1615	3220X1133X1667	2315	70
5	NWV 200	150	188	165	206	TAD732GE	E	6L	2598X1050X1571	1940	3420X1233X1719	2740	70
6	NWV 220	160	200	176	220	TAD733GE	E	6L	2657X1050X1571	2060	3420X1233X1719	2860	70
7	NWV 275	200	250	220	275	TAD734GE	E	6L	2633X1050X1571	2140	3420X1233X1719	2940	70
8	NWV 358	260	325	286	358	TAD1341GE	E	6L	2946X1108X1749	2900	3620X1333X1920	3800	75
9	NWV 412	300	375	330	412	TAD1343GE	E	6L	3057X1200X1753	3465	3820X1333X1859	4365	75
10	NWV 450	328	410	360	450	TAD1344GE	E	6L	3057X1200X1753	3465	3820X1333X1859	4440	75
11	NWV 500	364	455	400	500	TAD1345GE	E	6L	3082X1200X1803	3540	3820X1333X1859	4450	75
12	NWV 510	372	465	408	510	TAD1640GE	E	6L	3082X1200X1803	3540	4220X1433X2220	5070	75
13	NWV 560	408	510	448	560	TAD1641GE	E	6L	3205X1200X2148	3868	4220X1433X2220	5200	75
14	NWV 650	474	592	520	650	TAD1642GE	E	6L	3205X1200X2148	4100	4220X1633X2350	5600	75
15	NWV700	510	637	560	700	TAD1643GE	E	6L	3404X1400X2203	4400	4300X1700X2400	5900	75

**NEWPOWER**

No	Genset Model	Output				Diesel Gensets Specification			Dimensions & Weight Open		Dimensions & Weight Silent		
		Prime (kw)	Prime (kva)	Stand By (kw)	Stand By (kva)	Engine Model	Gov.	Cyl.	LXWXH	Weight (kg)	LXWXH	Weight (kg)	Noise Level (db (A)@7m)
1	NWV 105	77	96	84	105	TAD530GE	E	4L	2081X820X1497	1225	2620X1033X1517	1725	70
2	NWV 120	88	110	96	120	TAD531GE	E	4L	2035X820X1497	1260	2620X1033X1517	1760	70
3	NWV 160	117	146	128	160	TAD532GE	E	4L	2202X900X1492	1420	2820X1133X1617	2020	70
4	NWV 190	139	173	152	190	TAD731GE	E	6L	2466X900X1542	1615	3220X1133X1667	2315	70
5	NWV 220	160	200	176	220	TAD732GE	E	6L	2598X1050X1571	1940	3420X1233X1719	2740	70
6	NWV 240	175	219	192	240	TAD733GE	E	6L	2657X1050X1571	2060	3420X1233X1719	2860	70
7	NWV 300	219	273	240	300	TAD734GE	E	6L	2633X1050X1571	2140	3420X1233X1719	2940	70
8	NWV 390	284	355	312	390	TAD1341GE	E	6L	2946X1108X1749	2900	3620X1333X1920	3800	75
9	NWV 450	328	410	360	450	TAD1343GE	E	6L	3057X1200X1753	3465	3820X1333X1859	4365	75
10	NWV 500	364	455	400	500	TAD1344GE	E	6L	3057X1200X1753	3465	3820X1333X1859	4440	75
11	NWV 550	400	500	440	550	TAD1345GE	E	6L	3082X1200X1803	3540	3820X1333X1859	4450	75
12	NWV 560	408	510	448	560	TAD1640GE	E	6L	3082X1200X1803	3540	4220X1433X2220	5070	75
13	NWV 615	448	560	492	615	TAD1641GE	E	6L	3205X1200X2148	3868	4220X1433X2220	5200	75
14	NWV 715	520	650	572	715	TAD1642GE	E	6L	3205X1200X2148	4100	4220X1633X2350	5600	75
15	NWV770	560	700	616	770	TAD1643GE	E	6L	3404X1400X2203	4400	4300X1700X2400	5900	75



**Volvo Marine**



## Deutz Diesel Power



Deutz is a world famous independent manufacturer of Diesel generators. In early nineties, DEUTZ developed brand-new water cooled engine, which includes the series of 1013, 2012, 2013, 2015 etc with its power ranged from 30 Kw to 520 Kw.

The engine of new series has the feature of small size big power low noise less emission easy to start which meets the stringent emission regulations and have a broad market prospect.



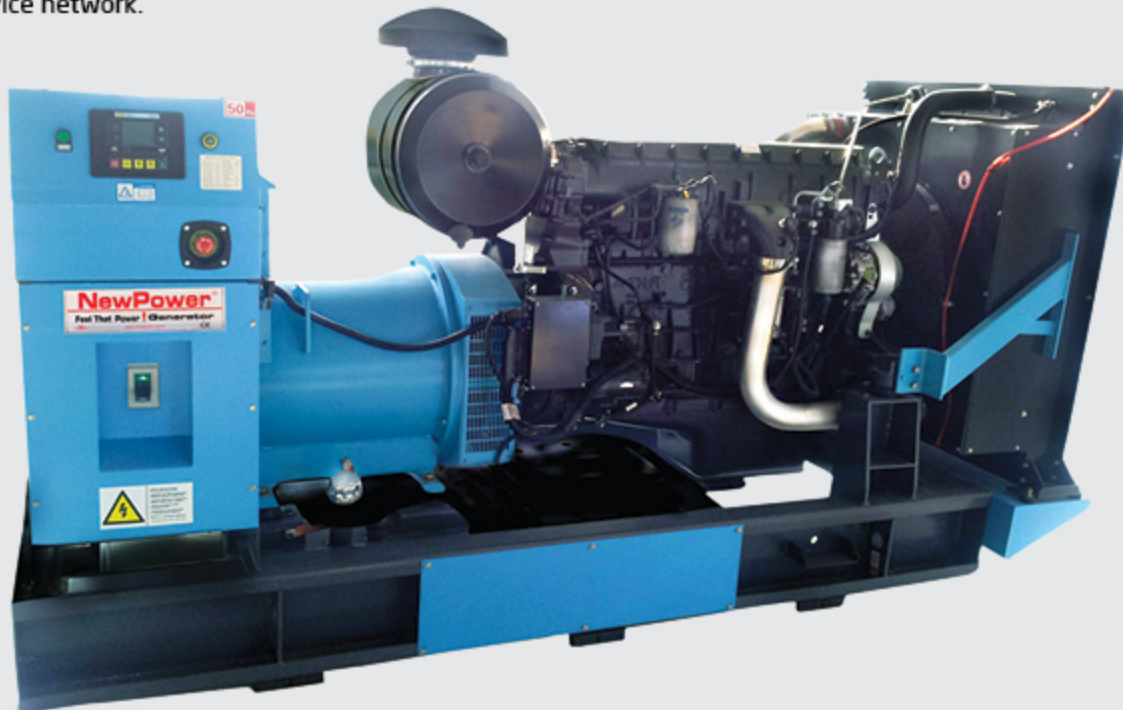
No	Genset Model	Output				Diesel Gensets Specification Date Specification			Dimensions & Weight Open		Dimensions & Weight Silent	
		Prime ( kw)	Prime (kva)	Stand By (kw)	Stand By (kva)	Engine Model	Gov.	Cyl.	LXWXH	Weight (kg)	LXWXH	Weight (kg)
1	NWD 66	48	60	53	66	BF4M2012	M	4L	2080X940X1550	1050	2800x1008x1300	1700
2	NWD 83	60	75	66	83	BF4M2012C	M	4L	2080X940X1550	1100	2800x1008x1300	1700
3	NWD 110	80	100	88	110	BF4M1013EC	M	4L	2080X940X1550	1200	3000x1108x1650	1850
4	NW 140	102	128	112	140	BF4M1013FC	E	4L	2400X920X1550	1200	3000x1108x1650	1850
5	NWD 165	120	150	132	165	BF6M1013EC	M	6L	2350X920X1550	1560	3500x1208x1950	2400
6	NWD 193	140	175	154	193	BF6M1013FCG2	M	6L	2600X1000X1800	1600	3500x1208x1950	2500
7	NWD 220	160	200	176	220	BF6M1013FCG3	M	6L	2600X1000X1800	1600	3500x1208x1950	2500

Genset Model	Output				Diesel Gensets Specification			Dimensions & Weight Open		Dimensions & Weight Silent	
	Prime ( kw)	Prime (kva)	Stand By (kw)	Stand By (kva)	Engine Model	Gov.	Cyl.	LxWxH	Weight (kg)	LxWxH	Weight (kg)
NWD 225	162	202	180	225	TBD234V6	E	6L	2730x1100x1760	2600	3160x1200x1900	3618
NWD 275	200	250	220	275	TBD234V6.G	E	6L	3040x1088x1640	2022	3800x1360x2050	3200
NWD 300	216	270	240	300	TBD234G6.G	E	6L	3040x1088x1640	2050	3800x1360x2050	3200
NWD 350	252	315	275	350	TBD234V8	E	8V	3150x1250x1680	2100	3920x1560x2100	3250
NWD 400	288	360	320	400	TBD234V8G	E	8V	3150x1250x1680	2200	3920x1560x2100	3500
NWD 450	324	405	360	450	TBD234V8	E	8V	3150x1250x1680	2400	3920x1560x2100	3800
NWD 550	364	455	440	550	TBD234V12	E	12V	3480x1560x1920	3400	4350x1950x2400	4800
NWD 650	468	585	520	650	TBD604BL6	E	6L	3480x1560x1920	3650	4350x1950x2400	5150
NWD 700	504	630	560	700	TBD604BL6	E	6L	3480x1560x1920	3800	4350x1950x2400	5300
NWD 750	540	675	600	750	TBD604BL6	E	6L	3480x1560x1920	4300	6058x2438x2590	5800
NWD 800	660	825	720	900	TBD620L6	E	6L	4800x1880x1915	5000	6058x2438x2590	7500
NWD 850	800	1000	880	1100	TBD620V8	E	8V	4800x1880x1915	5200	6058x2438x2590	7700
NWD1400	1000	1250	1120	1400	TB620V12	E	12V	6000x2200x2390	9000	12190x2438x2890	13500
NWD1650	1200	1500	1320	1650	TBD620V12	E	12V	6000x2200x2390	9120	12190x2438x2890	13600
NWD2200	1600	2000	1760	2200	TBD620V16	E	16V	6500x2200x2390	9000	12190x2438x2890	13800

**NEWPOWER**

No	Genset Model	Output				Diesel Gensets Specification			Dimensions & Weight Open		Dimensions & Weight Silent	
		Prime ( kw)	Prime (kva)	Stand By (kw)	Stand By (kva)	Engine Model	Gov.	Cyl.	LxWxH	Weight (kg)	LxWxH	Weight (kg)
1	NWK 225	162	202	180	225	DW8.0-P6TI	E	6L	2530x1000x1360	1698	3160x1200x1700	2318
2	NWK 275	200	250	220	275	DW13-P6TI	E	6L	3040x1088x1640	2022	3800x1360x2050	3200
3	NWK 300	216	270	240	300	DW13-P6TI	E	6L	3040x1088x1640	2050	3800x1360x2050	3200
4	NWK 350	252	315	158	280	DW13-P6TI2	E	6L	3150x1250x1680	2100	3920x1560x2100	3250
5	NWK 400	288	360	320	400	DW13-P6TI3	E	6L	3150x1250x1680	2200	3920x1560x2100	3500
6	NWK 450	324	405	360	450	DW13-P6TI4	E	6L	3150x1250x1680	2400	3920x1560x2100	3800
7	NWK 500	360	450	400	500	DW13-P6TI5	E	6L	3150x1250x1680	2600	3920x1560x2100	4000
8	NWK 550	364	455	440	550	DW26-PV12TI	E	12L	3480x1560x1920	3400	4350x1950x2400	4800
9	NWK 600	432	540	480	600	DW26-PV12TI2	E	12L	3480x1560x1920	3600	4350x1950x2400	5100
10	NWK 650	468	585	520	650	DW26-PV12TI3	E	12L	3480x1560x1920	3650	4350x1950x2400	5150
11	NWK 700	504	630	560	700	DW27-PV12TI	E	12L	3480x1560x1920	3800	4350x1950x2400	5300
12	NWK 750	540	675	600	750	DW28-PV12TI	E	12L	3480x1560x1920	4300	4350x1950x2400	5800
13	NWK 800	640	720	462	800	DW28-PV12TI2	E	12L	4800x1880x1915	5000	6000x2350x2390	7500
14	NWK 850	612	765	680	850	DW28-PV12TI3	E	12L	4800x1880x1915	5200	6000x2350x2390	7700
15	NWK 900	648	810	720	900	DW28-PV12TI3	E	12L	4800x1880x1915	5300	6000x2350x2390	7800

Daewoo diesel engine series provides qualified and efficient service to customer through Newpower and Daewoo worldwide service network.





## Alternator



### What advantage of alternator used on Newpower Diesel Generating Set?

- 4 pole, brushless, self-excited, IP21 or IP 23 ( can supply higher IP 45 or IP 54 on request) Insulation class H, temperature resistance 180 C. Providing enough guarantee for Newpower Diesel Genset running in harsh environment.
- The windings have a 2 / 3 pitch in order to reduce the harmonic content by elimination of 3rd order current harmonics reduce overall voltage distortion levels.
- Rotors are balance tested before installation. The damper cage can help reduce voltage distortion and additional heat under non-linear load condition
- The power produced by exciter supplies to the main rotor through a three phase full-wave rectifier. This rectifier is protected by a surge suppressor and prevent the impact damage caused by wrong phase under paralel condition and short circuit condition
- The voltage accuracy is +1 % in static condition with any power factor and with speed variation between -5 % and +30 % with reference to the rated speed
- Radio Interference Coefficient TIF < 50, Radio harmonic coefficient THF < 2 %. Brushless device and high quality AVR can ensure superior low radio interference.

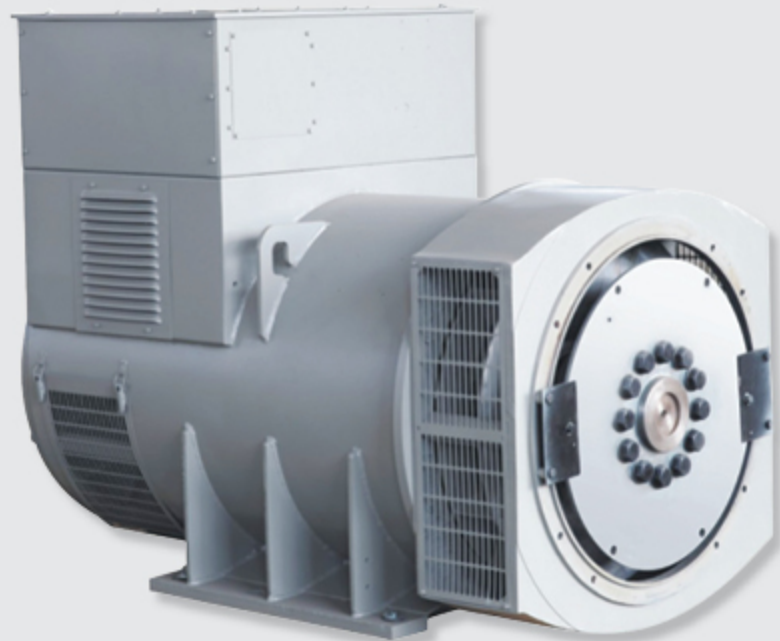


**KRAFT**

**10KVA-2500KVA**

Kraft alternator is a German brand designed by a variety of internationally recognized standard.

Kraft is convenient to standart VDE 0530-VDE0875



**NEWPOWER**

## Alternator



### STAMFORD

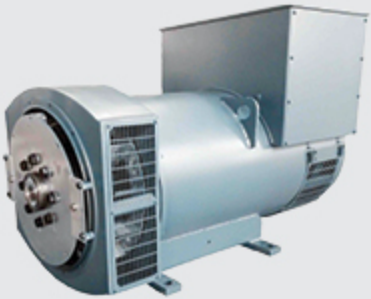
7.5 KVA-2200 KVA

Stamford AC 4 pole 12.5 kva- 2200 kva generator share more than 30 % of the worlds market. Manufactories locate in the United Kingdom, India, the United States, Indonesia and Wuxi in China. Stamford AC generator is the international Standard ISO9001 requirements and it also completed by a variety of internationally recognized Standard.



7.5KVA-2250KVA

Leroy - Somer French Company has been a Pioneer in the motor industry since it founded in 1919. Generator can be driven by engine including Diesel engines, gas engine, turbine and wind-driven. Leroy- Somer has more than 470 sales and service organizations to provide fast and qualified service in the world.



10.75KVA-2250KVA

MARATHON generators have been awarded Certificate for America UL, Certificate for Canada CSA. And Marine generators have Certificates of Type Approval for Marine Product and FishingVessel Product as well as Certificate for USA ABS and France BV. MARATHON generators are widley used in the fields such as construction, mine, hospital, military, marine, reefer, telecommunication, crane duty, etc. In addition, generators are exported far to USA, Canada, South-East of Asia, Europe, the Middle East, etc. In addition, generators are exported far to USA, Canada, South-East of Asia, Europe, the Middle East, etc.



8.8 KVA-2250KVA

MECC ALTE S.P.A is headquartered in Italy, from its inception in 1947, has been in the generator field 60 years of experience, is the world's four leading generator brands. In the generator industry has been among the world leading level, the company has always focused on Generating technology implementation and development, manufacturing and application. The product has CE and CSA certificate . Production base locate in the UK, India, and China. Marine generators have passed the British Lloyd's, Det Norske Veritas ( DNV) the French classification society ( Bureau Veritas ) American Bureau of Shipping ( ABS) and the Italian classification society (RINA) recognition.





## Automatic Transfer Switch



Mainly used for main power and emergency power supply automatic switching, with self-starting up the Diesel generator can compose automatic emergency power system, which can automatically switch the load from lighting, security, power supply, fire equipment to the generator.

An essential power supply facility for hospital, banks, telecommunications, airports, stations, hotels, factories and fire equipment.



### *ATyS M* 40 to 160 A

- The ATyS M 3s ( RTSE) is the remotecontrolled version, through volt free contacts from an external automatism, in the 3 positions (0,I and II ) following a pulse logic or maintained contactor .

### *ATyS* 125 to 3200 A

- The ATyS 3 is the remotecontrolled version through volt free contacts from an external automatism, in the 3 positions ( 0, I and II)

## Special Automation Solutions

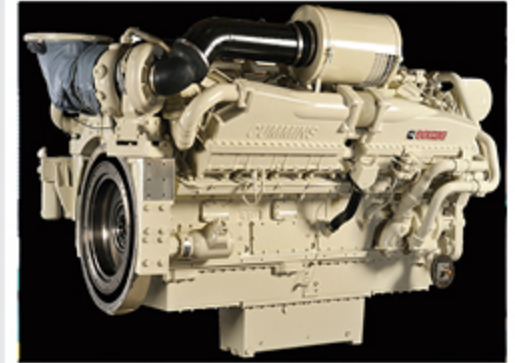
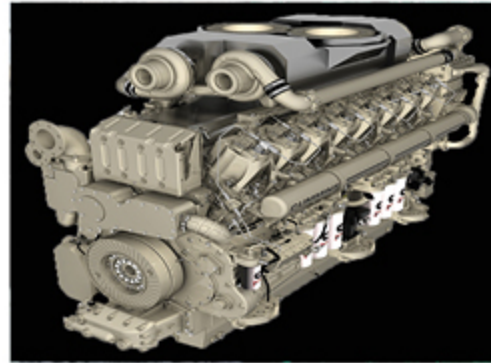
Newpower Generator provides special services for projects in the areas like petrol refineries, airports, stadiums, shopping malls such as special designed generators with oil starter, high voltage and with remote control & monitoring system..



## Spare Parts



Newpower Generator provides speed solutions for technical service and customs all over the world.



## Quality Certificates





# NEWPOWER®

*Generator*

**Newpower Generator A.Ş.**  
Antakya Organize Sanayi Bölgesi 8 No'lu Yol No:1 - Hatay/TURKEY  
Tel : 0090 326 451 25 77  
Fax : 0090 326 451 25 78  
e-mail : [info@newpower.com.tr](mailto:info@newpower.com.tr)  
Web : [www.newpower.com.tr](http://www.newpower.com.tr)

