



GROUP OF COMPANIES

COMPANY FIGURES



31 500 SQM
PRODUCTION

10 000 SQM
WAREHOUSE AREA

1000 EMPLOYEES

30 R&D ENGINEERS

OUR MISSION

**METAL PART PRODUCTION OF A HIGH QUALITY
FOR BUSINESS DEVELOPMENT OF OUR PARTNERS**

OUR VALUES

TECHNOLOGY

TEAM

PARTNERSHIP

FLEXIBILITY



GLOBALITY

OUR PARTNERS

DISTRIBUTION
FACTORIES AND DISTRIBUTORS



CERTIFICATES



CERTIFICATE

This is to certify that

Rival Production, LLC


has implemented and maintains a **Quality Management System**.

Scope:
Design and manufacturing of protection elements for engine crankcase, transmission units, fuel tanks, pipe and sheet interior parts, stamped and bent body parts.


An audit, conducted and documented in a report, has verified that this quality management system fulfills the requirements of the following International Automotive Standard:


IATF 16949:2016
(with product design)

Certificate registration no. 31100501 IATF16
Issuing date 2018-03-30
This certificate is valid until 2021-03-29
IATF No. 0297808


2-IAO-QMC-01001

For and on behalf of DQS


Nuran G. Venkatasubramanian
Corporate Program Manager Automotive, DQS Holding GmbH


Michael Drechsel
Managing Director, DQS Holding GmbH

IATF Contract Office: DQS Holding GmbH, Konrad-Adenauer-Allee 8-10, 61118 Bad Vilbel, Germany

1 / 2

IATF 16949:2016

QUALITY MANAGEMENT SYSTEM



CERTIFICATE

This is to certify that

Rival Production, LLC

with the organizational units/sites as listed in the annex

has implemented and maintains a **Quality Management System**.

Scope:
Design, manufacturing and supplying of protection elements for engine crankcase, transmission units and auxiliary systems for automotive industry and vehicle safety systems

Through an audit, documented in a report, it was verified that the management system fulfills the requirements of the following standard:

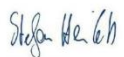
ISO 9001 : 2015

Certificate registration no. 31100501 QM15
Valid from 2018-03-30
Valid until 2021-03-29
Date of certification 2018-03-30



Deutsche Akkreditierungsstelle
D-226 18074-01-00

DQS GmbH


Stefan Herdtich
Managing Director

Accredited Body: DQS GmbH, August-Schwarz-Straße 21, 60433 Frankfurt am Main, Germany
Administrative Office: 000 SSU DEKUS, Respublikanskaya str. 3, 150003 Yaroslavl, Russian Federation

1 / 2

ISO 9001:2015

QUALITY MANAGEMENT SYSTEM



CERTIFICATE

This is to certify that

T2K Retail, LLC

has implemented and maintains an **Environmental Management System**.

Scope:
Design, manufacturing and supplying of protection elements for engine crankcase, transmission units and auxiliary systems for automotive industry and vehicle safety systems

Through an audit, documented in a report, it was verified that the management system fulfills the requirements of the following standard:

ISO 14001 : 2015

Certificate registration no. 31100501 UM15
Valid from 2020-12-28
Valid until 2023-12-27
Date of certification 2020-12-28



Deutsche Akkreditierungsstelle
D-226 18074-01-00

DQS GmbH


Markus Stehrer
Managing Director

Accredited Body: DQS GmbH, August-Schwarz-Straße 21, 60433 Frankfurt am Main, Germany
Administrative Office: 000 SSU DEKUS, Respublikanskaya str. 3, 150003 Yaroslavl, Russian Federation

ISO 14001:2015

ENVIRONMENTAL MANAGEMENT SYSTEM

AUDITS COMPLETED



SIEMENS

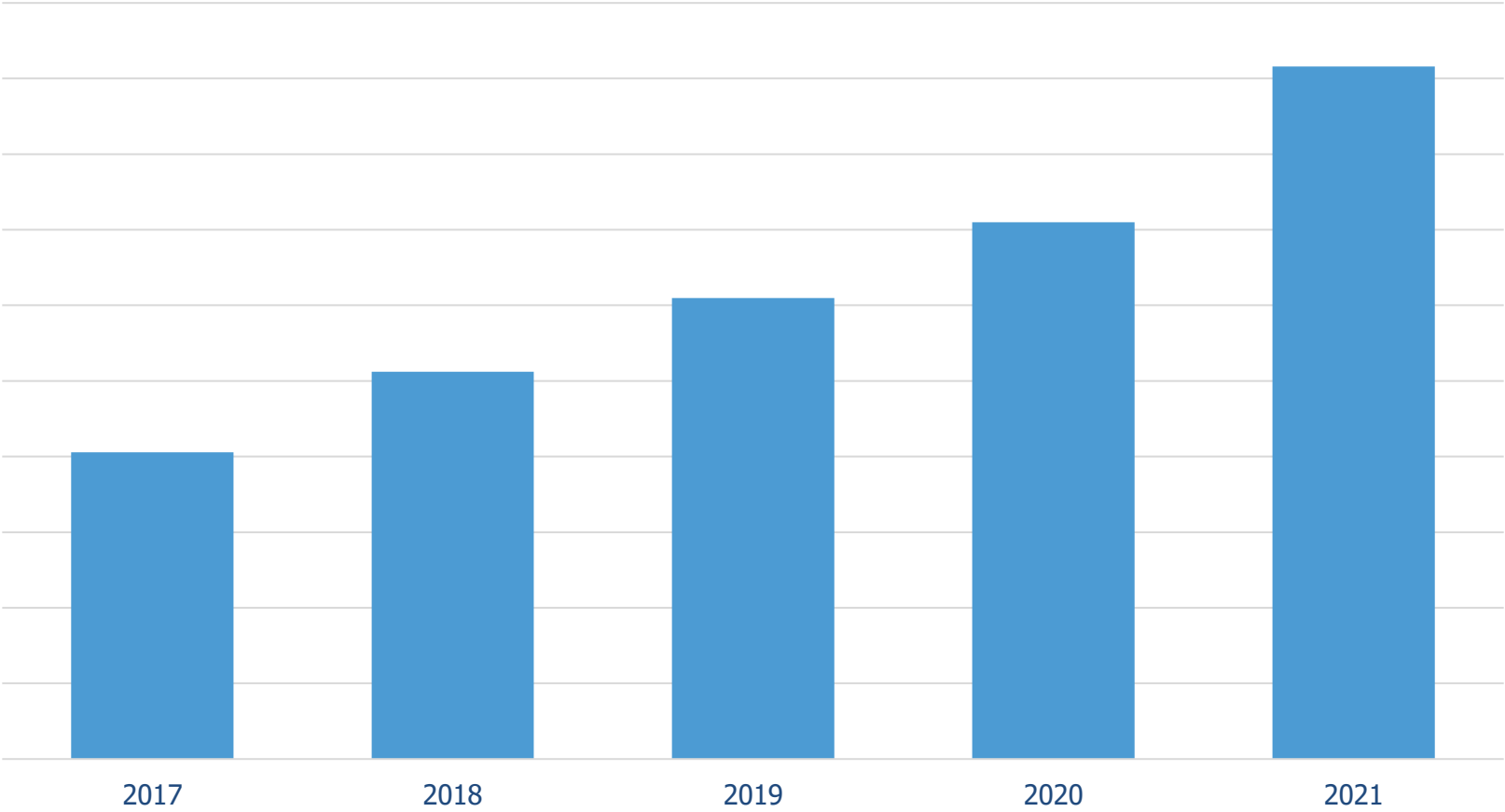
ALSTOM



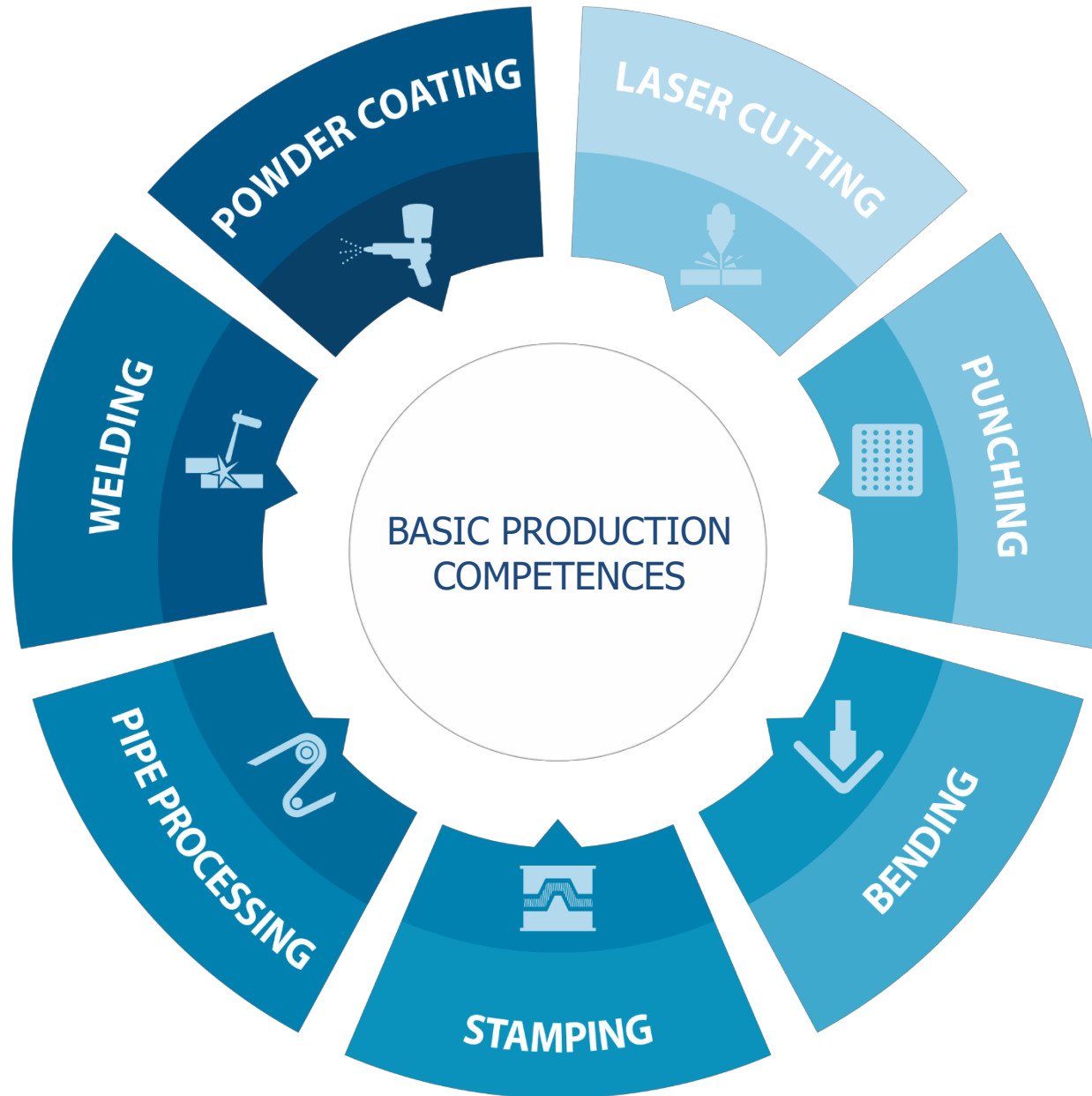
REVENUE GROWTH DYNAMICS

AVERAGE ANNUAL GROWTH: 29%

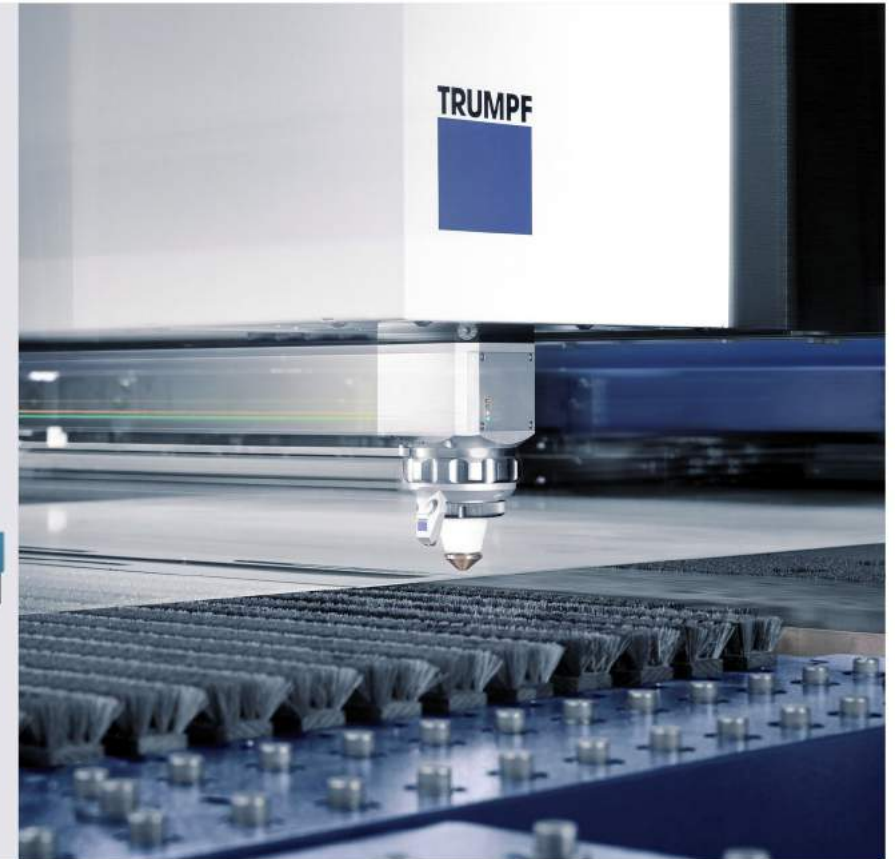
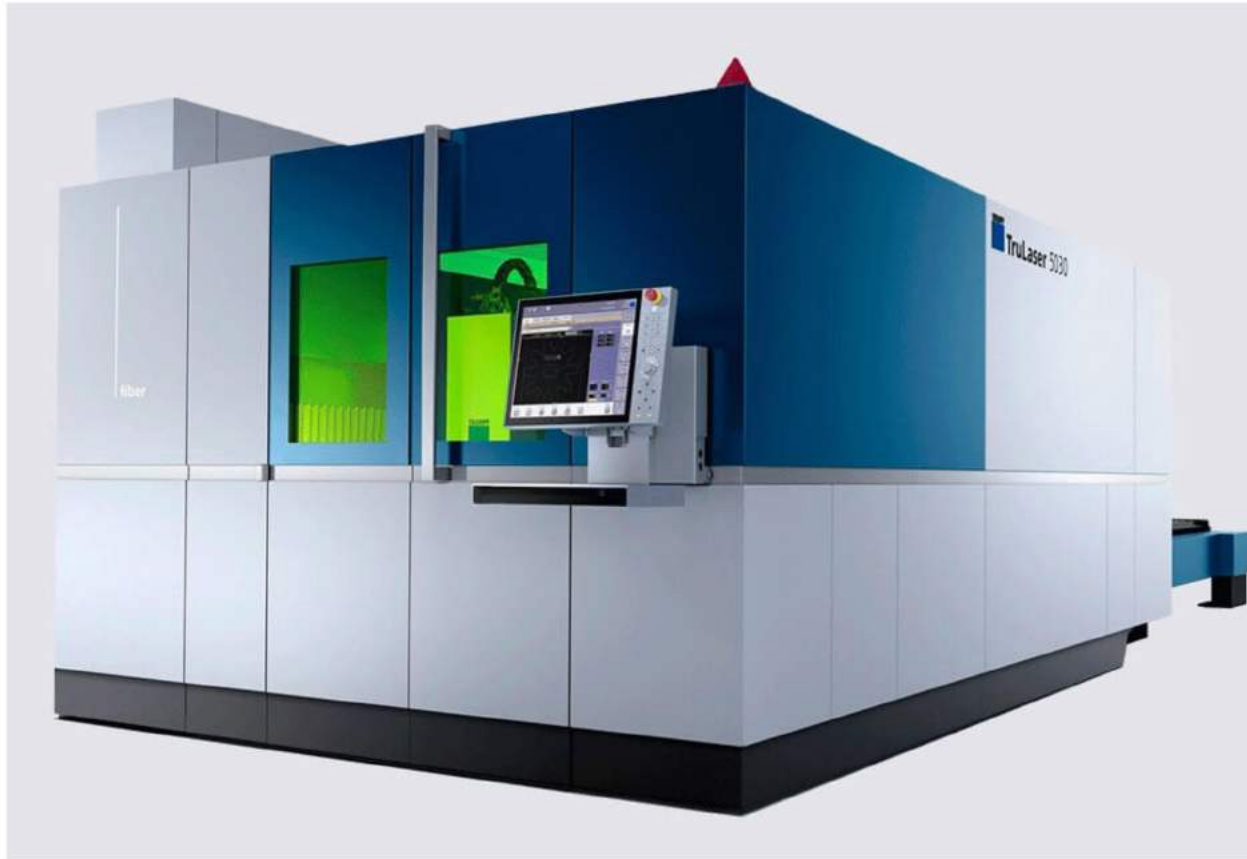
MORE THAN 80 000 000 \$



PRODUCTION ABILITIES



LASER METAL CUTTING



9
LASER CUTTING
COMPLEXES TRUMPF

up to **30** mm
CARBON STEEL

10 kW
MAXIMUM
CAPACITY

up to **30** mm
STAINLESS STEEL

1 500 x 3 000 mm
TABLE SIZE

up to **20** mm
ALUMINUM

3D LASER CUTTING



800 kg

MAXIMUM TABLE LOAD

18 mm

MAXIMUM THICKNESS
OF PROCESSED STEEL

0,03 mm

OF POSITIONING ACCURACY

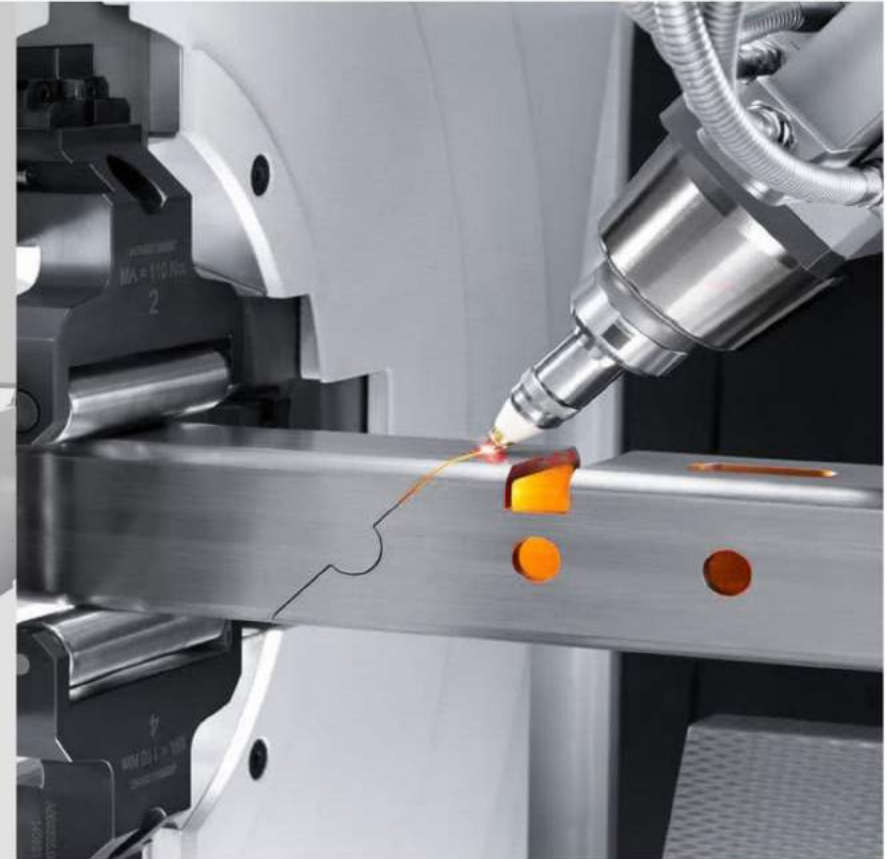
3 000 x 1 500 x 700 mm

WORKING ZONE

4 kW

MAXIMUM CAPACITY

3D LASER CUTTING TUBE



from **12** to **240** mm
ROUND TUBE DIAMETER

6500 mm
LOAD ZONE

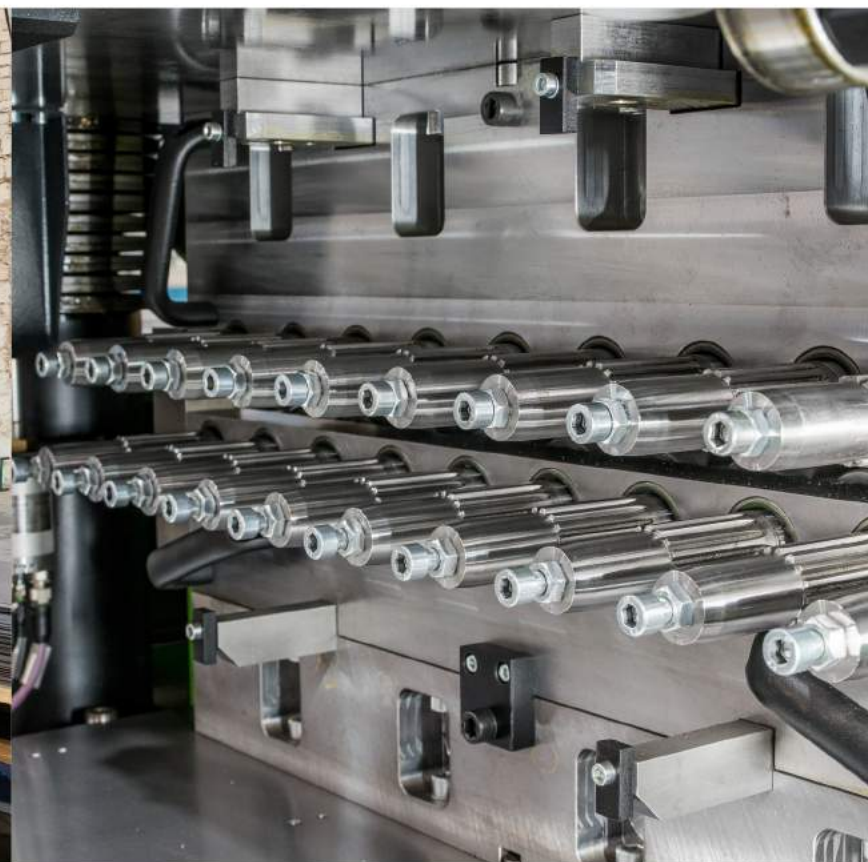
U, L, C - shaped tubes
OPEN PROFILE PROCESSING

from **12** to **200** mm
SQUARED TUBE DIAMETER

6000 mm
UNLOAD ZONE

3 kW
MAXIMUM CAPACITY

METAL SHEET ADJUSTMENT



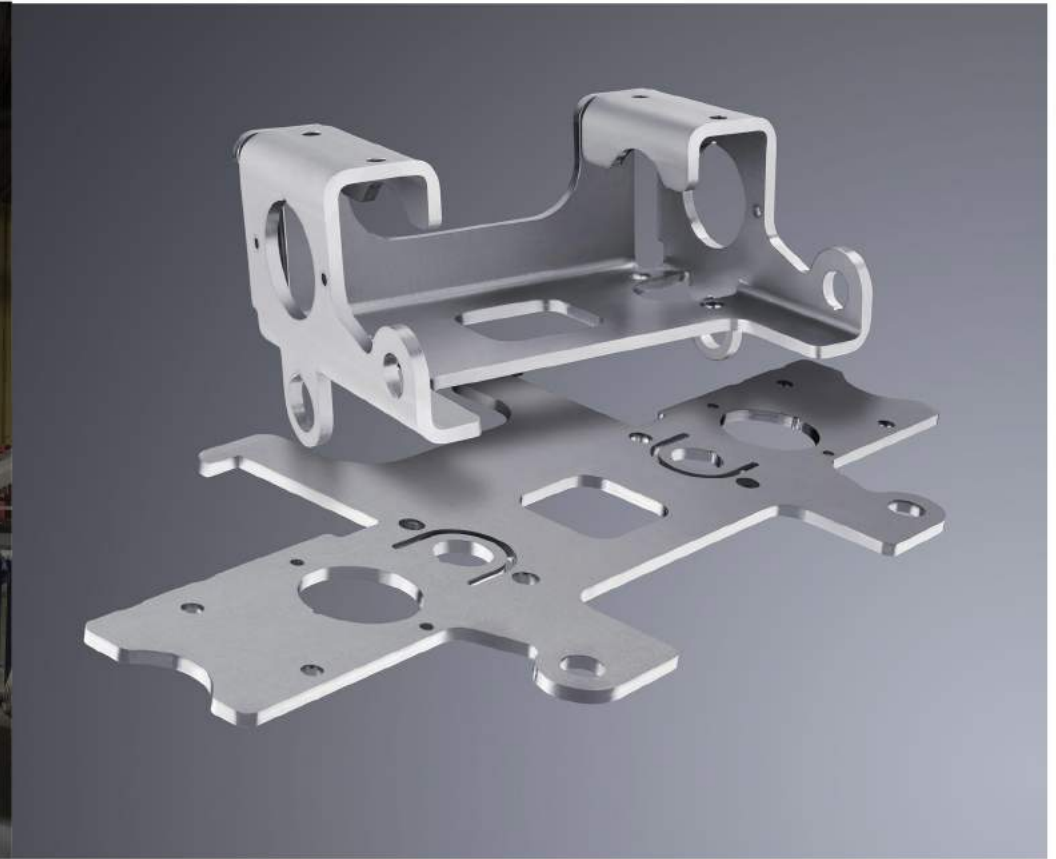
19
STRAIGHTENING
SHAFTS

0,5-16 mm
THICKNESS ADJUSTMENT
RANGE

0,05 mm
FLATNESS OF
PROCESSED SHEET

1 600 mm
WORKING
WIDTH

SHEET METAL BENDING



13
BENDING
MACHINES

1
PANEL BENDING MACHINE
SALVAGNINI

0,1 mm
BENDING
ACCURACY

3 230 mm
MAXIMUM BENDING
LENGTH

METAL DIE FORGING



800 t
MAXIMUM
STRENGTHENING

14
PRESSING
MACHINES

2 500 x 1 500 mm
MAXIMUM
TABLE SIZE



LATHE MILLING METAL PROCESSING WITH CNC MACHINES



8

MILLING LATHE
MACHINES

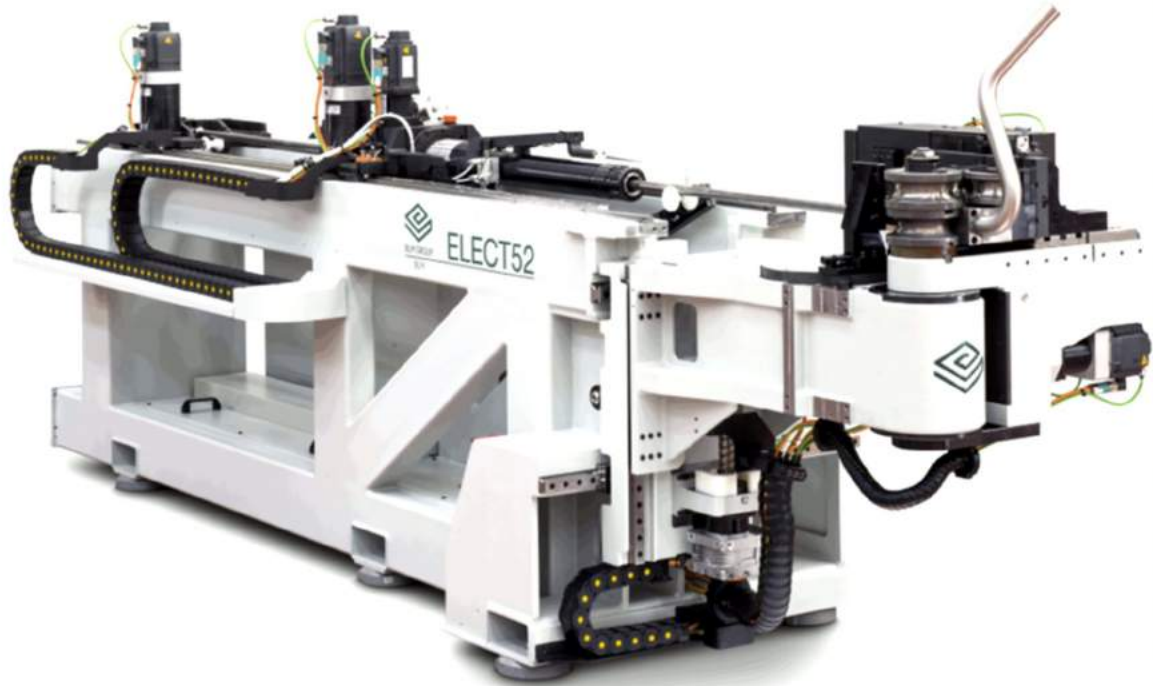
2 200 x 1 300 x 800 mm

THE MAXIMUM SIZE OF THE
PROCESSED WORKPIECE

3 500 kg

THE MAXIMUM WEIGHT
OF A WORKPIECE

PIPE PROCESSING



250 mm
MAXIMUM
BENDING RADIUS

3
CNC PIPE BENDING MACHINES
(MANDREL PIPE BENDING)

9
CONTROLLED AXES

3 800 mm
MAXIMUM LENGTH
OF INSTALLED PIPE

89 mm
MAXIMUM
PIPE SIZE

ROLLING



8 mm
MAXIMUM THICKNESS

2 050 mm
SHAFT LENGTH

200 mm
UPPER SHAFT DIAMETER

WELDING



5

WELDING
ROBOTS

24

POSITIONS
OF MIG WELDING

8

POSITIONS
OF TIG WELDING

4

POSITIONS
OF RESISTANCE WELDING

SHOT BLASTING TREATMENT



7 000 x 5 000 x 4 000 mm
INNER CHAMBER DIMENSIONS

3
SHOT BLASTING UNITS

2 500 x 2 500 mm
GATE DIMENSIONS

POWDER COATING



3 000 x 800 x 2 200 mm

MAXIMUM ARTICLE
DIMENSIONS

3

AUTOMATED
LINES

6

ZONE SURFACE
PREPARATION

300 m

LENGTH OF
COATING LINES

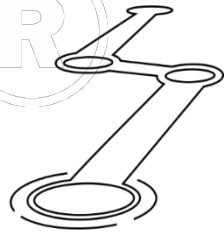
720

HOURS OF SALT FOG
CORROSION RESISTANCE

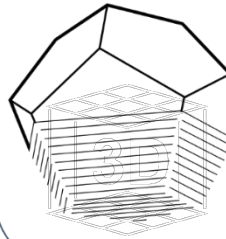
300 000 sqm

PER MONTH
MANUFACTURING CAPACITY

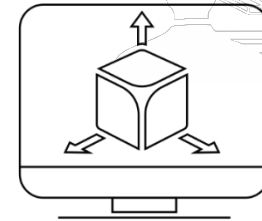
TECHNOLOGICAL
ELABORATION



3D MEASUREMENT
3D SCANNING



CAD

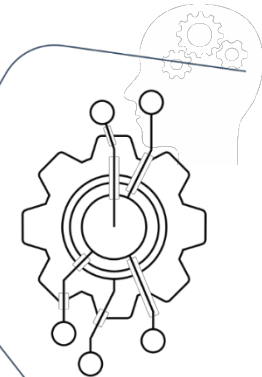


R&D

TESTING



ENGINEERING



TOOLING
MANUFACTURING



AUTO ACCESSORIES

ALUMINIUM AND STEEL SKID
PLATES



HOOD AND
TAILGATE
ASSIST KITS



INTERIOR AND TRUNK
MATS



SPLASH GUARDS



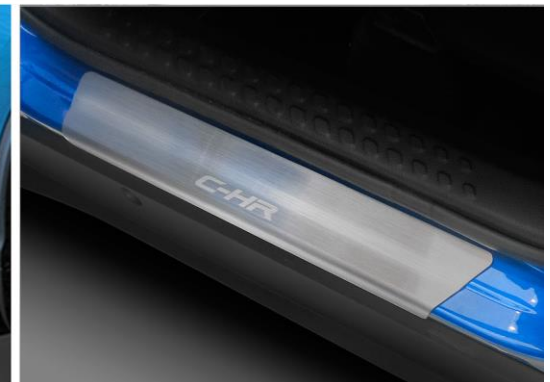
TOW BARS



SEAT COVERS



SIDE STEPS



SIDESTEP AND
BUMPER
SILL
RADIATOR
GUARDING
MESH

TRAVEL ACCESSORIES



ALUMINIUM FRONT AND REAR
BUMPERS

ALUMINIUM SKID
PLATES

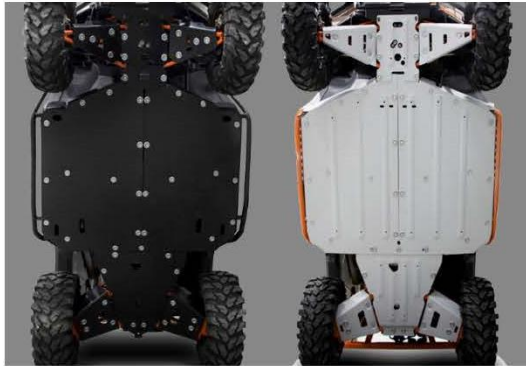
MODULAR ROOF RACKS AND ROOF
RACK ACCESSORIES

SIDE STEP
BARS



ATV AND SNOWMOBILE ACCESSORIES

ALUMINIUM AND PLASTIC SKID PLATES



RADIATOR RELOCATOR KITS WITH SNORKELS



UTV DOORS



PLOW SYSTEMS AND ACCESSORIES



STEEL AND ALUMINIUM BUMPERS FOR ATV



ALUMINIUM SKID PLATES FOR SNOWMOBILES



STEEL AND ALUMINIUM BUMPERS FOR SNOWMOBILES



TRANSPORTATION ACCESSORIES FOR SNOWMOBILES

RIVAL EUROPE GmbH
Schuetzenplatz 12A, 28790 Schwanewede, Germany

WWW.RIVAL-EUROPE.COM



+49 421 161 029 77
info@rival-europe.com
www.facebook.com/rival4x4europe
www.instagram.com/rival4x4europe