

Indo Autotech Limited

WELCOME





Indo Autotech Limited

Our Products



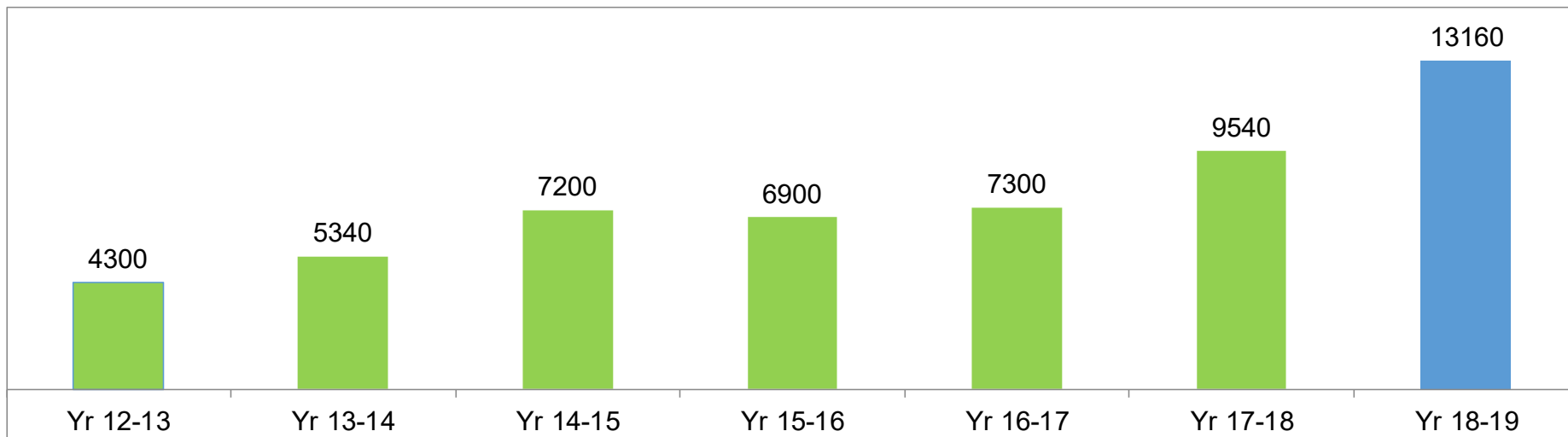


Indo Autotech Limited

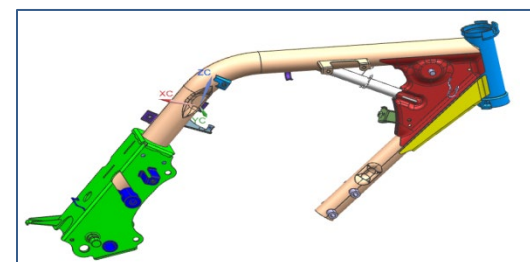
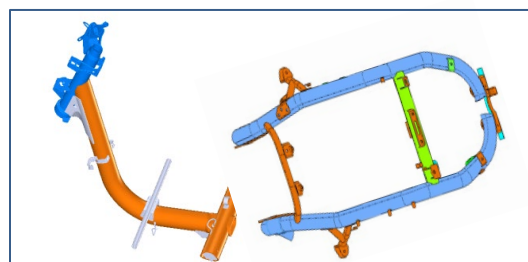
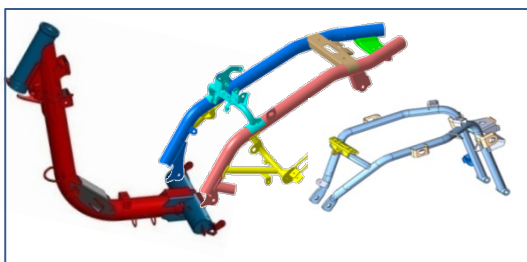
Our Products



☐ Sales Growth Data



➤ Major Parts :-



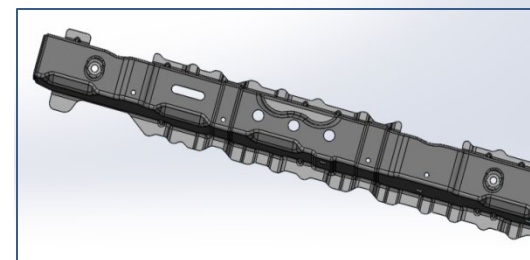
Frame Body for Motorcycle & Scooter



Exh. Muffler



Door Beams

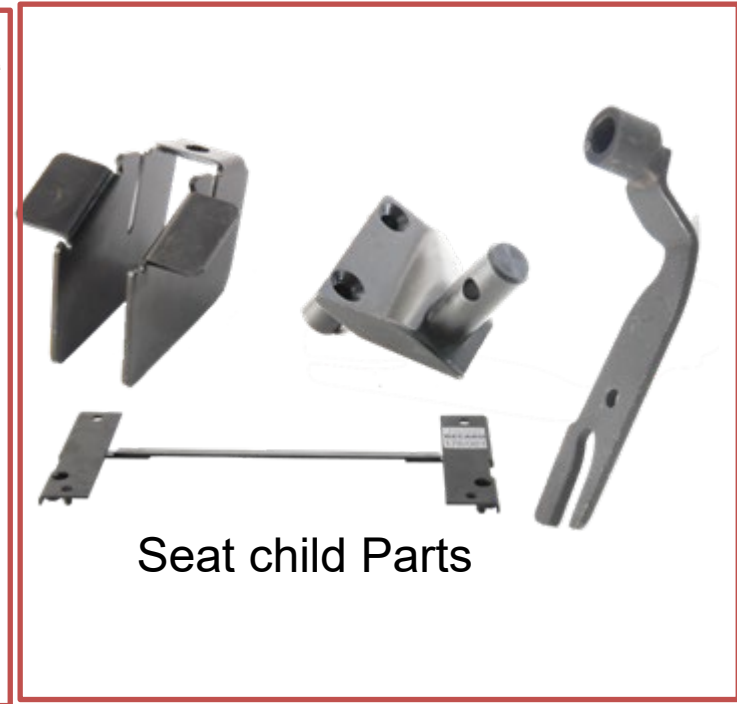
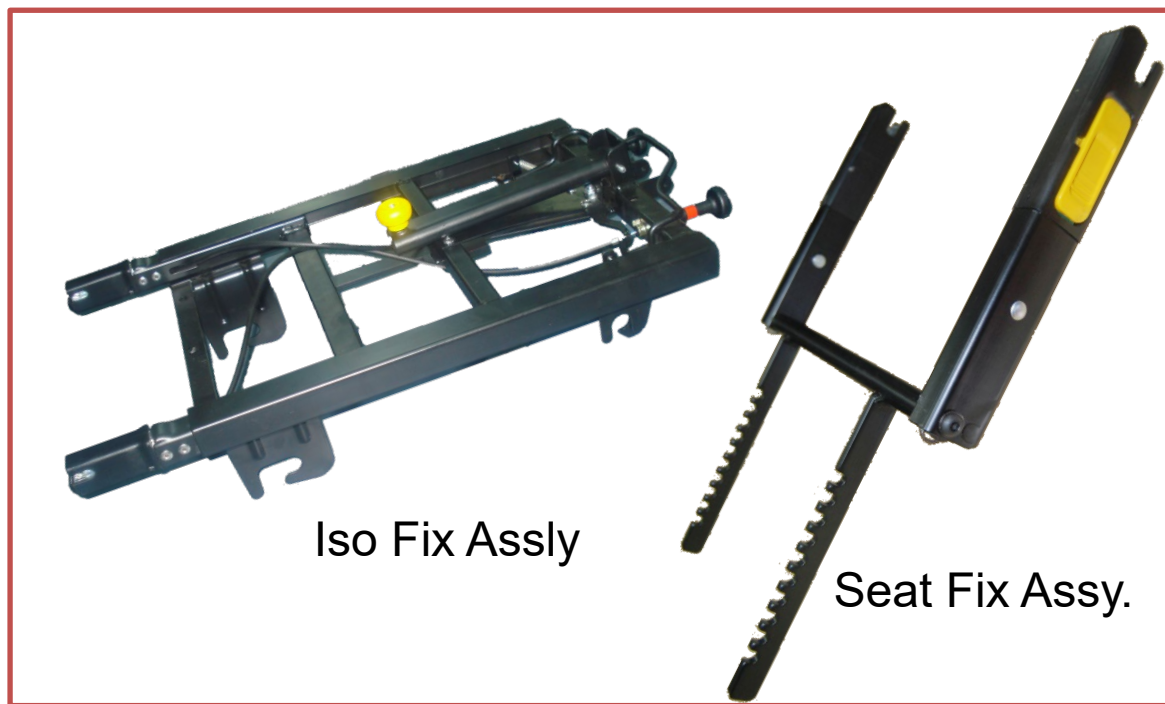
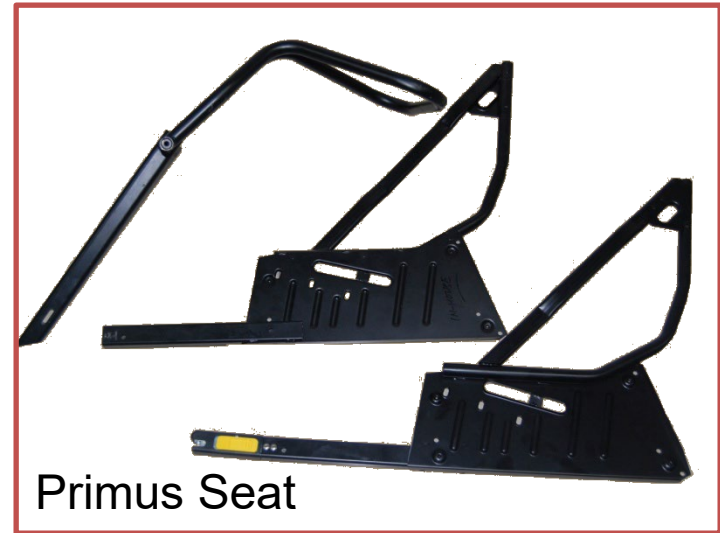


Press Parts

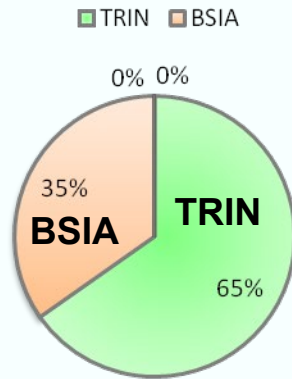


2-Wheeler & 4-Wheeler Product Range

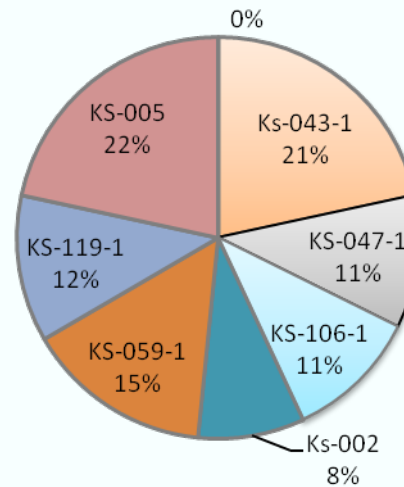
| Customer | Product Range | Models | ❑ 2 – Wheeler Parts | | | | |
|----------|---|---|---------------------|--------------------------|-------------------------|-------------------|-----------------------|
| | <ul style="list-style-type: none"> Main & Rear Assy Fuel tank Swing Arm Weld Assemblies | <ul style="list-style-type: none"> Activa Dio Shine Dream Yuga Dream Neo | <p>Frame Assy.</p> | <p>Fuel Tank</p> | <p>Fork Assy</p> | <p>Swing Arm</p> | |
| | <ul style="list-style-type: none"> Weld Assy Press Parts Frame Sub Assy | <ul style="list-style-type: none"> FZ-S Gladiator | <p>Swing Arm</p> | <p>Foot Rest</p> | <p>Main Stand</p> | <p>Handle</p> | <p>Main Stand</p> |
| | <ul style="list-style-type: none"> Swing Arm Main Stand Frame sub Assy. | <ul style="list-style-type: none"> Zeus Hayate Gixer | <p>Swing Arm</p> | <p>Cowl</p> | <p>Main Stand</p> | <p>Foot Rest</p> | <p>Pipe Comp Head</p> |
| Customer | Product Range | Models | ❑ 4-Wheeler Parts | | | | |
| | <ul style="list-style-type: none"> Press Parts | <ul style="list-style-type: none"> Mobilio Jazz | <p>Brace Tunel</p> | <p>Extension</p> | <p>Trunk Lid</p> | <p>Door Beam</p> | |
| | <ul style="list-style-type: none"> Weld Assy Press Parts | <ul style="list-style-type: none"> Swift Ertiga Ciaz | <p>Fuel Rail</p> | <p>Fuel Rail Bracket</p> | <p>Bkt Frt Fender R</p> | <p>Bkt Lower</p> | |
| | <ul style="list-style-type: none"> Weld Assy | <ul style="list-style-type: none"> Swift Ertiga | <p>Engine Bkt</p> | <p>Engine Mounting</p> | <p>Engine Bkt .Assy</p> | <p>Engine Bkt</p> | <p>Engine Bkt</p> |



Engine Mounting Supply /Monthly



Tokai Part Supply Detail/Day



| Customer | Product Range | Models | 4-Wheeler Parts | | | | | | |
|----------|--|--|-----------------|----------|----------|----------|----------|----------|--------|
| | <ul style="list-style-type: none"> Weld Assy Press Parts | <ul style="list-style-type: none"> Swift Ertiga S-Presso Wagno-R Brio | | | | | | | |
| | | | KS-043-1 | KS-047-1 | KS-106-1 | KS-002-1 | KS-059-1 | KS-119-1 | KS-005 |



Tubular / Furnace Brazing Parts for MSIL



Exhaust Parts for Yutaka / Futaba



CNG Fuel Rail for Keihin



WA LOADER ARM LH



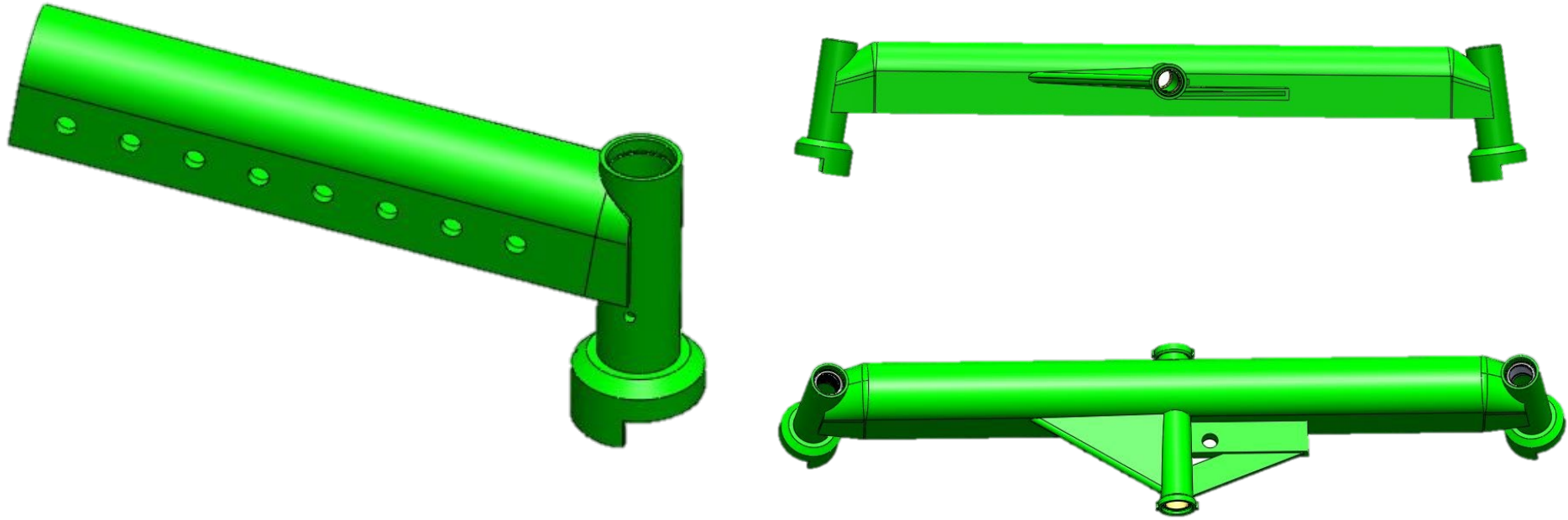
WA LOADER ARM RH



WA AXLE YOKE



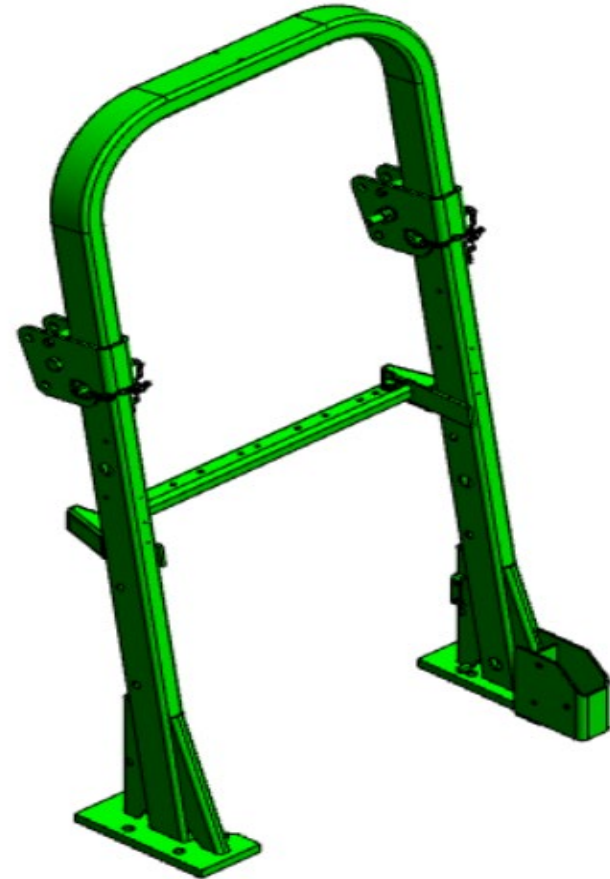
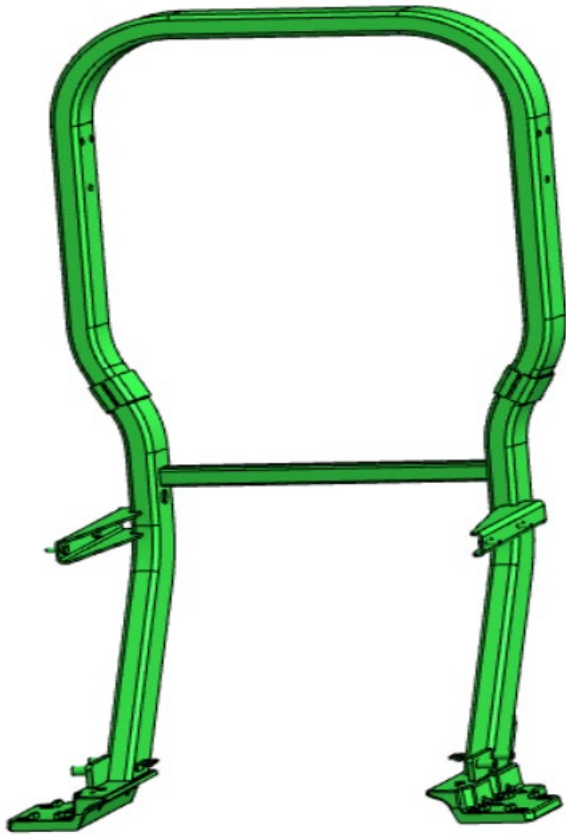
Tower Outer



Axle Assembly

| | |
|-----------------------|----------------|
| Part Name | Axle End Assy. |
| Part Dim. (mm) | 550x250x150 |
| Part Wt. (kg) | 11 Kg |

| | |
|-----------------------|-------------------|
| Part Name | Axle Center Assy. |
| Part Dim. (mm) | 1100x100x200 |
| Part Wt. (kg) | 30 Kg |



Rops Assembly

| | |
|-----------------------|---------------|
| Part Name | Rops Fix Assy |
| Part Dim. (mm) | 1700x900x700 |
| Part Wt. (kg) | 64.7 |

| | |
|-----------------------|---------------------|
| Part Name | Rops Foldable Assy. |
| Part Dim. (mm) | 1800x900x600 |
| Part Wt. (kg) | 70 Kg |



Indo Manufacturing Locations & Product Range

Manesar Factory (North)



| Major Products | Vol. / Day (Nos) |
|-------------------------|------------------|
| F/Body Sub Comp (MC110) | 750 |
| F/Body Sub Comp (MC150) | 1,400 |
| F/Body Sub Comp (SC125) | 900 |
| Fuel Tank (SC110) | 3,000 |
| Swingarm Comp (MC110) | 750 |

Tapukara Factory (North)



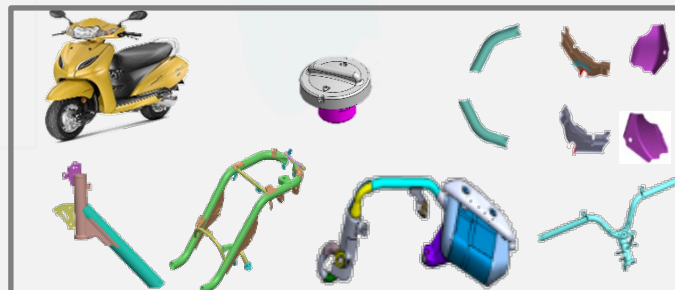
| Major Products | Vol. / Day (Nos) |
|-------------------------|------------------|
| F/Body Sub Comp (MC110) | 350 |
| F/Body Sub Comp (MC125) | 950 |
| F/Body Sub Comp (MC100) | 50 |
| Fork Comp Front (SC110) | 1,200 |
| Swingarm Comp (MC110) | 1,200 |

Narsapura Factory (South)



| Major Products | Vol. / Day (Nos) |
|---------------------------|------------------|
| F/Body Sub Comp (MC110) | 1,600 |
| F/Body Sub Comp (MC125) | 2,300 |
| F/Body Sub Comp (SC110) | 2,900 |
| Swingarm Comp (MC110&125) | 3,200 |
| Muffler Comp Exh. (SC110) | 2,400 |

Vithalapur Factory (West)



| Major Products | Vol. / Day (Nos) |
|-----------------------------|------------------|
| F/Body Sub Sub Comp (SC110) | 2,200 |
| Muffler Assy (SC 110) | 2,200 |
| Handle Comp Strg (SC 110) | 2,200 |

Indo Supply 13,400 No's F/Body Sub Comp & 3,000 Fuel Tank & 4,600 No's Muffler / Day to HMSI