

KLÜPPELBERG

Machine Tools & Service

Years
Klüppelberg
1994-2014



Services



General Overhaul



Construction/Development



Modernization



Processing Attachments



Maximum Productivity

For the past 20 years we have maintained our success in the market as a service provider for machine tools of the medium, large and extra-heavy processing industry.

Today the Klüppelberg company successfully provides its services to well-known companies (not only in Germany but also in neighboring countries) for all aspects of maintenance and special machine construction. For us, safeguarding your continued productivity and functionality enjoys absolute priority.

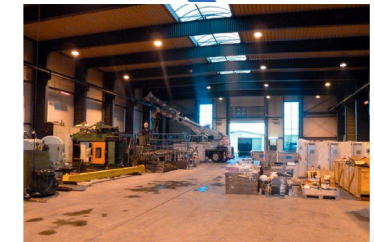
To maintain the quality of our work at the highest level, we rely on a healthy mix of skilled, experienced staff and young, inquisitive employees. Ongoing further education and training and the use of sophisticated modern measuring equipment give us a competitive edge and create motivation in the workforce.

KLÜPPELBERG ...

Your Full-Service Supplier.



Company seat 2001: Boelckestreet



Company seat 2012: Zeiðstreet

History

1994 Company established

→ 20 successful years in the business!

1996 Increased range of services

→ Complete range of services from one source!

1999 Enlarged Design Construction Office

→ New home of special machine design!

2000 Processing Attachments Made in Germany

→ Made in Kerpen!

2001 Removal to the Kerpen Industrial Estate

→ Machinery and test rigs – plus a 10 ton crane!

2002 Inception of Apprenticeship Program

→ Training of mechanical engineers & technical draftsmen!

2005 Retrofit Plan

→ Modernized machines at state-of-the-art technology!

2008 Special Machine Construction/Design

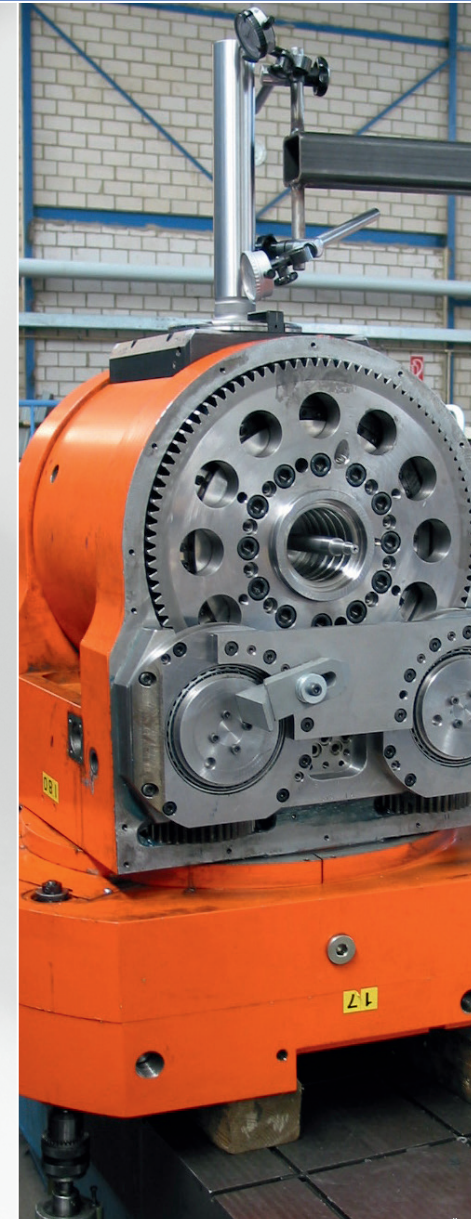
→ Complete solutions to meet customer requirements!

2009 Machine trading

→ Competitively priced machines with support service!

2012-2013 Relocation to the new production plant

→ New infrastructure for special machine design!





A look into the future...

Today Klüppelberg is gearing up for its own production of customized special machines. The necessary know-how and expertise for special machine design have been continuously developed over the last 20 years.

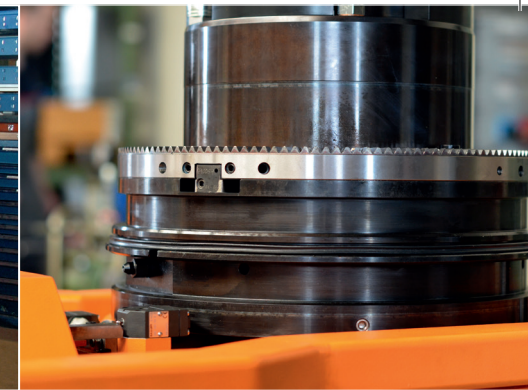
Having begun with the fundamental service of maintaining machine availability, then extending into the design of machine components and modules, and also the development of high-tech automation, the team at Klüppelberg GmbH & Co.KG has also been committed for more than 10 years now to an ongoing Apprenticeship Program.

Today after continuous expansion and products based on acquired knowledge, we are now modernizing large machining plants right through to „state of the art“ technology, thus decisively extending the life of existing

operational installations. In view of the comparatively low cost of modernization compared to the purchase of a new machine, we furnish not only a high degree of competitiveness, but help reduce to a considerable extent the business risk of our customers. Therefore, now after more than 20 years, it was only logical to expand our infrastructure in 2012, so that we are now able to build entire machines at our new plant in Kerpen, North Rhine-Westphalia.

In order to stand out from the competition, the decision was made to concentrate on special machine design – and thus lot-size 1. It is after all the engineering which distinguishes us from the competition.

A workforce aged 38 on average, low turnover of staff and ongoing training



all help us to continue our operations successfully. In order for the workforce, the Klüppelberg company, and of course our customers, to remain confident and optimistic about the way ahead, the future management of the Company is now on the agenda. Thus, in the long term the management of the company will be transferred to the son of the founders. Klüppelberg GmbH & Co.KG is after

all a family business, and what could be more sensible than the careful but also timely introduction to this task of the heir.

It is foreseen that this will take place in eight to ten years, but until then there is still a lot to learn.

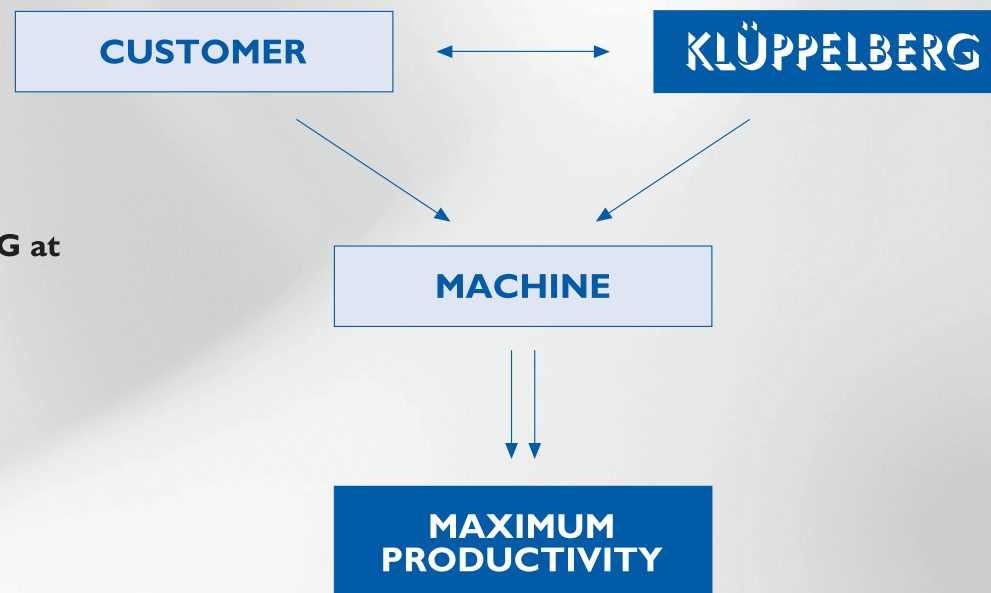
Here's to the next 20 years!

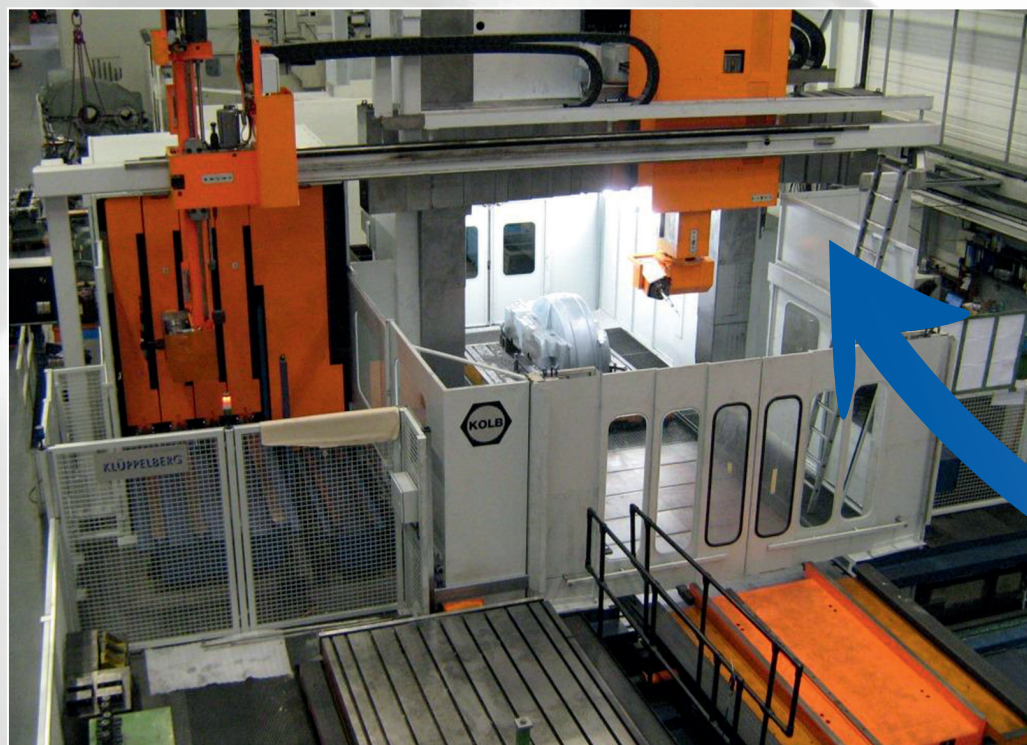
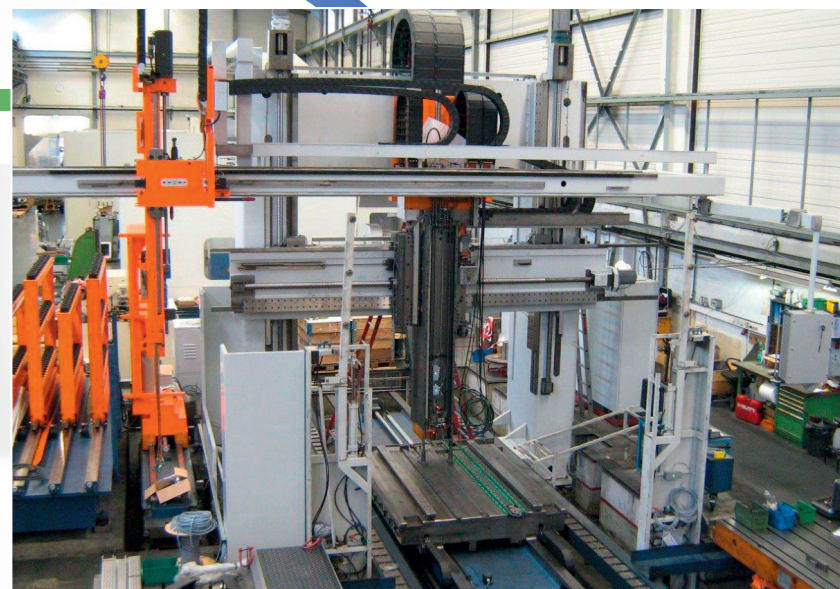
Klüppelberg GmbH & Co.KG at your service!

Dirk Klüppelberg
(Managing Director & Spokesman)
Petra Klüppelberg
(Financial Director)
Friedhelm Goesmann
(Technical Director)
...and our entire workforce

KLÜPPELBERG ...

Innovation and individual solutions for the employment and competitiveness of your production machine.





Our maxim is: Customer-specific modernization only – never just run-of-the-mill refurbishing.

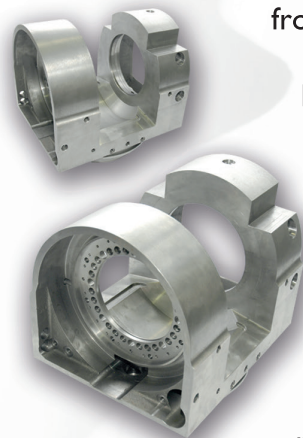
And this is how we do it!

- ➔ 1. General overhaul of the entire machine.

Integration of new innovative power trains in the machining axes, the auxiliary axes and the RAM as a basic prerequisite for the new automation.

- ➔ 2. Now completely new e-technology is superimposed on the primed machine.

In essence, these are all drag chains, cable + wiring, new switchgear with air conditioning as well as state-of-the-art control systems with drives + motors.



So far so good.... but you get this with a new investment too!

But what now follows is the major and crucial difference from a “run-of-the-mill” machine, i.e. from the respective type from the manufacturer.

Manufacturers develop the machine cycles for their respective machine types and series to be employed by a wide variety of customers in different fields. We, however, will develop a concept tailored to your production. That is to say, we develop machine software designed exclusively for your manufacturing and products, which will generate up to 70% savings in non-productive time.

**Example of modernization for an engine manufacturer*



Machine type Cubimat Kolb*
Program duration for Crank Case

before
modernization
7 hours



after
modernization
5 hours.

Reduction of program duration by 2 hours

Our maxim is: Customer-specific modernization only – never just run-of-the-mill refurbishing..



SERVICES

→ Fast and professional

GENERAL OVERHAUL

→ Operational safety & increased efficiency

CONSTRUCTION/DEVELOPMENT

→ Machine components of lot-size 1

MODERNIZATION

→ Highly competitive at half the price

PROCESSING ATTACHMENTS

→ Innovative, Powerful, Product Related

However – and this is crucial:

No change has been made to the processing technology, nor has the speed of the feed axes or the rotational speed of the spindle been increased.

Shortening the time by almost 30% was achieved solely by machine software specifically configured to the customer and his product range. There is still more potential for savings in this modernization, which your programming department can generate through the use and application of the new programming in the control system.

KLÜPPELBERG ...

Highest standards – Maximum Quality

And that's not all!

Further valuable processing time can be saved by attachments developed, manufactured and built by us in lot-size 1.

For example, a facing slide, geared to your product, is integrated in the system, automatically substituted and provided with tools. This facing slide then covers a whole spectrum of different drills in the highest quality and precision, without the trouble of an additional tool change. Thus you can reduce further runtimes of up to 50% and more. To realize this, we analyze one or more of your representative work pieces or the corre-



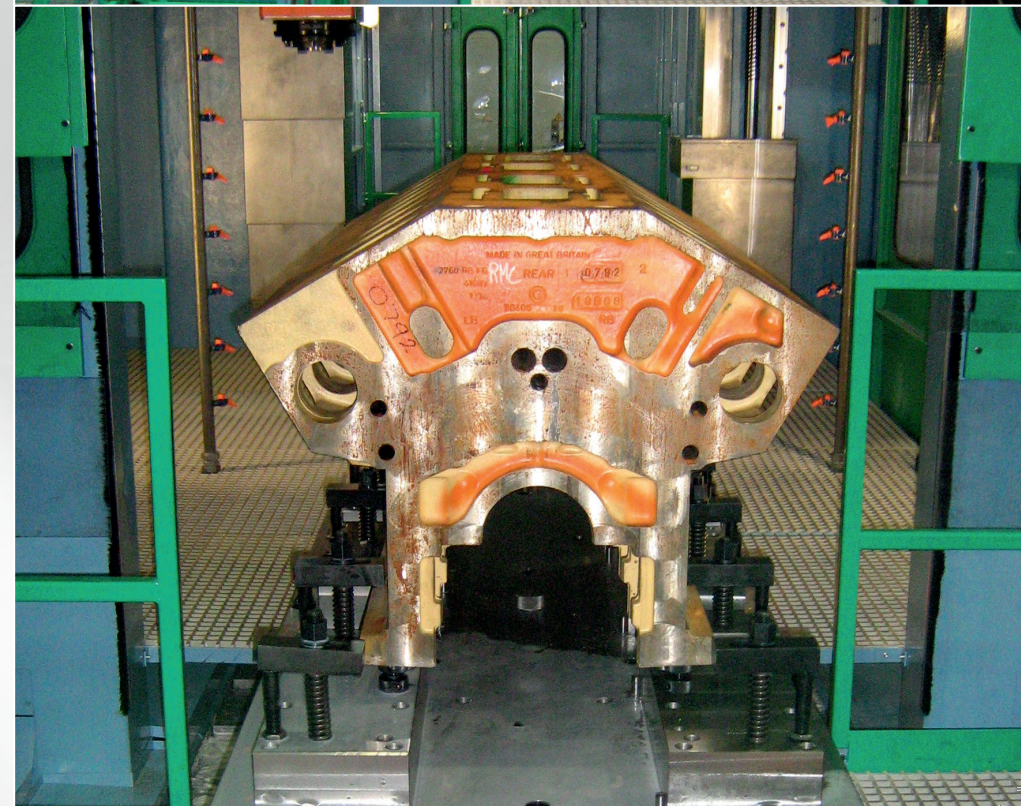
sponding processing programs on the machine to be modernized. These are analyzed for non-productive time such as tool and attachment change, swivel cycles and frequently employed manufacturing techniques. And so we can develop before the contract is awarded a reliable and guaranteed time saving.

And last but not least.

To make the decision for the maintenance of your machine even easier, we will undertake the work for less than 40% of the budget you would require for a new investment. This reduces the business risk significantly and guarantees a high level of competitiveness, with the same availability and warranty rights as you would expect from a new investment.

So, are you convinced?

Why not get in touch with us and find out more? – Naturally entirely without obligation!





Your contacts

Petra Klüppelberg · *Financial Director*

Telephone: 02237/92 92-45

E-Mail: pk@klueppelberg.de

Dirk Klüppelberg · *CEO & Sales*

Telephone: 02237/92 92-40

E-Mail: dk@klueppelberg.de

Friedhelm Goesmann · *Technical Director*

Telephone: 02237/92 92-43

E-Mail: fg@klueppelberg.de

Thomas Scheele · *Customer Services*

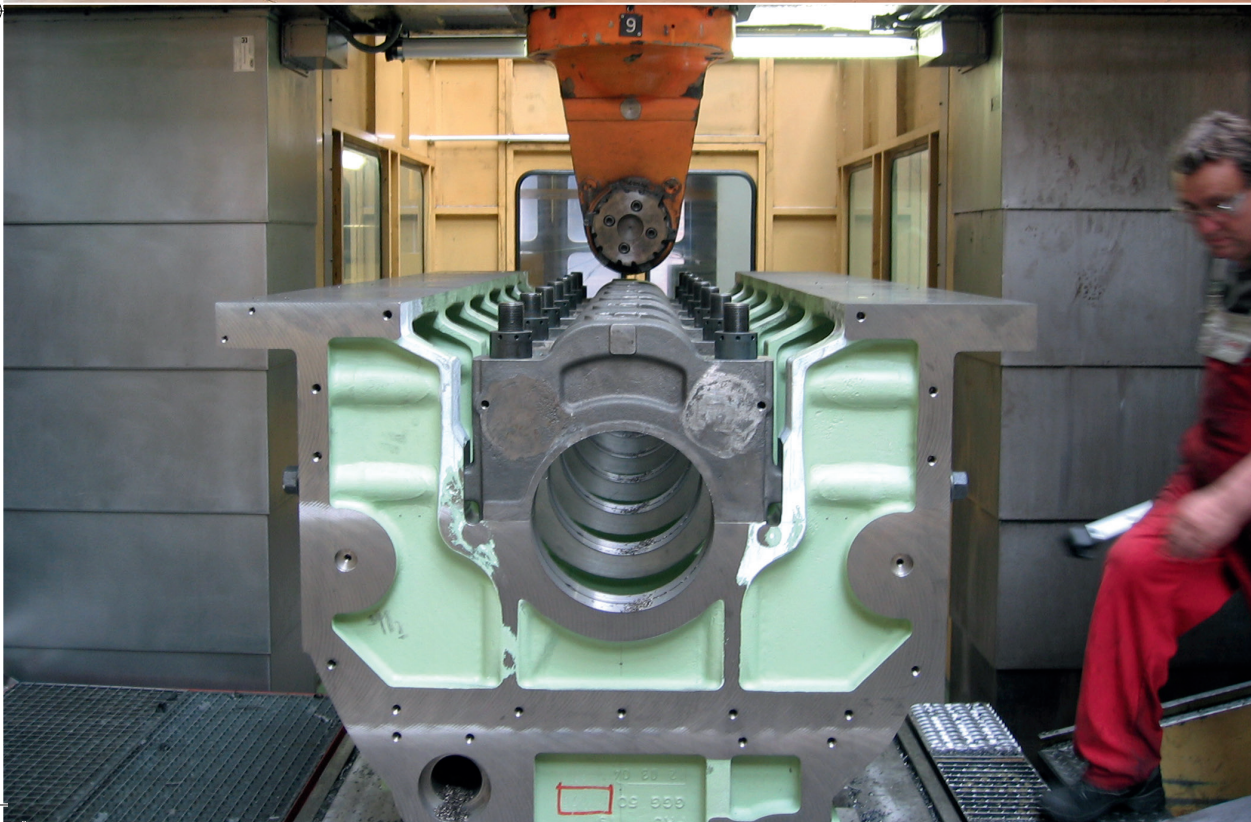
Telephone: 02237/92 92-44

E-Mail: support@klueppelberg.de

Harald Braun · *Purchasing & Material Administration*

Telephone: 02237/92 92-46

E-Mail: support@klueppelberg.de



Notes



How to find us

The Klüppelberg company is located at the Kerpen motorway junction and connects the cities of Cologne in the east with Aachen in the west. Thanks to the close proximity to Cologne-Bonn airport – only 20 minutes away and host to over 30 airlines – we are in the fortunate position of being able to reach almost all major cities in Europe within a few hours. This reduces travel costs and creates a high degree of flexibility.

KLÜPPELBERG ...

A reliable partner for machine maintenance – professional, flexible, fast and unbureaucratic.

Many years of expert knowledge

➔ In total: more than 250 years of experience!

From the heart of Europe

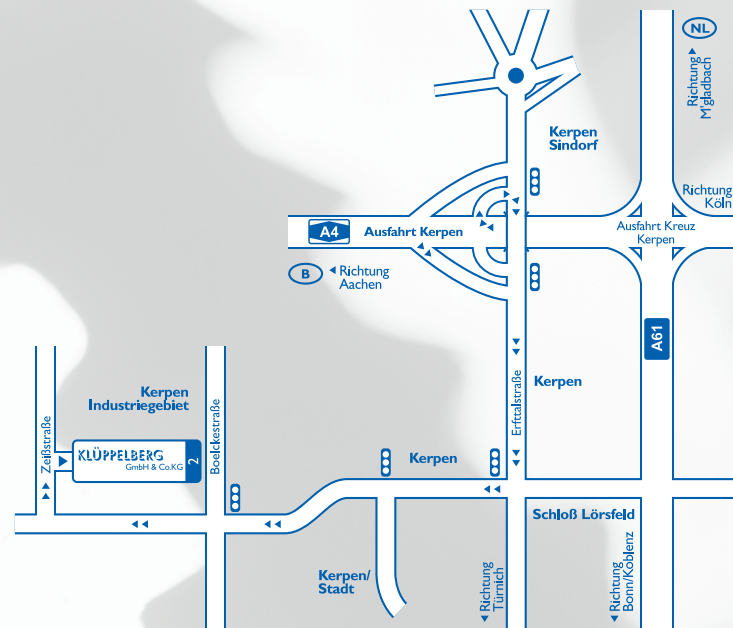
➔ Ideal transportation network via road, rail and airport!

Solid financial basis

➔ Thanks to High Equity Ratio!

Klüppelberg GmbH & Co.KG

➔ Professional, expert, flexible and fast!



Klüppelberg GmbH & Co.KG

Zeißstraße 2 · 50171 Kerpen

Telephone: +49 (0) 2237 9292-30

Fax: +49 (0) 2237 9292-31

E-Mail: info@klueppelberg.de

Web: www.klueppelberg.de